



CELEBRATING
25 YEARS OF
NATURAL
PROGRESS.

SS20 WORKBOOK
MOVE TO NATURAL

icebreaker

NATURAL PROGRESS FOR 25 YEARS

Driven by our belief that nature has the answers, we provide natural performance alternatives to plastic based apparel, to create a healthier and more sustainable future for our species and the planet.

1995

NATURAL PIONEERS

Jeremy creates a new category of natural performance clothing less reliant on petrochemical fibers.



1997

PARTNERS FOR LIFE

icebreaker is the first company in the world to establish long-term contracts with key merino wool growers.



2003

INTERNATIONAL PARTNERSHIPS

In order to access the best technology, ethics and capacity icebreaker sets advanced manufacturing hub in Shanghai.



2007

LEADING THE INDUSTRY

icebreaker becomes the first company to ban the mulesing of sheep in the outdoor industry.



2010

TRACEABILITY

icebreaker introduces a 'baacode' enabling customers to trace the fiber from their clothing all the way back to the farm.



2012

**COOLER
THAN COTTON**

icebreaker develops cool-lite™, a breakthrough blend of merino and plant based TENCEL®.



2013

**NO NEED
TO DUCK**

icebreaker develops a natural alternative to duck down made from merino.



2017

**TRANSPARENT
& PROUD**

icebreaker launches its first transparency report, leading the industry in complete public disclosure of our supply chain, policies, structure and practices.



2019

**MOVE TO
NATURAL
LAUNCH**

icebreaker launches a global movement towards natural, alongside ambassadors Anna Frost, Chris Burkard and Ben Lecomte.



2020

**CELEBRATING
NATURAL
PROGRESS**

icebreaker celebrates 25 years with new natural innovations and engaging with movement making natural progressives.



NATURAL PROGRESSIVES
LEAD THE FUTURE.



Ben Lecomte, Kahauloa Cove, Hawaii.



MEET BEN.

Long-distance swimmer and ocean advocate Ben Lecomte, will swim 300 nautical miles on a mission to explore and research plastic pollution residing in the Pacific Ocean, with a goal of raising awareness of this global crisis.

It's natural to ask questions,
It's progressive to seek answers.

Inspired by our pioneering roots and innovative natural fibre history, this year we celebrate those natural progressives challenging the status quo to drive towards a better future for us, our generations and the planet.

People are the real drivers of change.
Be part of the movement.
MOVE TO NATURAL™





CELEBRATING PROGRESS IN NATURAL INNOVATIONS

In 2020 we will hero all that is amazing about nature's ability to provide the answers and all that is amazing about human's ability to provide new perspectives and design solutions.

The natural innovations collection combines nature's brilliance and human's ingenuity, resulting in three natural innovations, each challenging the status quo in how to design and make clothing. These brand innovations prevent waste, pollution and unnecessary harm to the planet, whilst providing the ultimate in natural comfort and natural performance, without a compromise on the planet.



naturedye

Color as nature
intended.

Our **naturedye**
collection offers style,
everyday comfort
and versatility.
The conscious
natural alternative.





It takes just one glass
of water to dye a
naturedye t-shirt.

Dying is one of the most water intensive processes in the apparel industry, especially in synthetics. Our **nature**dye innovation is a new technology that uses 80% less water than traditional synthetic dying methods. The collection features soft and breathable merino-blend fabric dyed with sustainably sourced plant pigments. Better for you, better for the planet.

natureknit

Naturally resourceful.



Our **natureknit** collection offers comfort, performance and freedom of movement. The conscious natural alternative.



A continuous knit construction process enables low waste and optimum breathability.

An innovation in natural motion and material waste reduction, **nature**knit is the most natural seamless range available. A 70% merino-TENCEL® blend fabric is knitted in a continuous piece resulting in low waste and minimal offcut fabrics. Reduced seams prevent chafing and engineered knit mesh panels allow maximum breathability and comfort. Better for you, better for the planet.

cool-lite

Ultimate
natural comfort.

Our **cool**-lite collection offers lightweight luxury and comfort. The conscious natural alternative.





The ultimate in natural performance, a blend of animal and plant based fibers create a unique softness next to skin.

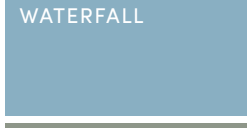
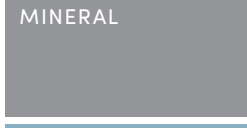
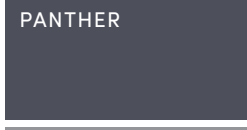
Plant-based technology TENCEL® and natural merino fibres create our unique lightweight and breathable **cool**-lite collection. Cool in the heat and soft and warm layered up in the cold, **cool**-lite is the go-to choice for effortless comfort every day with the added bonus of less impact on the planet than synthetic-based fabrics. Better for you, better for the planet.

SS20 COLOR REIMAGINED WOMEN'S



- MONSOON
- BLUE SPRUCE
- SUN
- SHALE
- BRITISH TAN
- HIBISCUS
- LAGOON
- ORCHID
- PANTHER
- MINERAL
- MERCURY
- ESTATE BLUE
- FIRE

MEN'S



ICEBREAKER CONSUMER OCCASIONS



SS20 COLLECTION

HERO CATEGORY NEXT TO SKIN

Natural performance intimates, designed by nature as your primary next-to-skin layer, providing comfort, style and all-day protection.

ICEBREAKER ADVENTURE EXPLORE, NATURALLY

Modern, versatile performance wear for your active adventures outdoors and in life. Designed for durability and ease of movement, in soft and breathable natural fibers.

ICEBREAKER TRAINING MOVE, NATURALLY

High-natural performance, low natural impact. Natural fibers that move, stretch and work with your body. Providing the ultimate comfort, breathability and odor-management for a training experience that is closer to nature.

ICEBREAKER LIFE LIVE, NATURALLY

Easy-going lifestyle staples made for versatility and comfort with assurance of sustainability and transparency. Your go-to pieces for whatever your day brings, with a focus on sustainability and natural innovations.

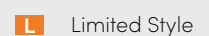
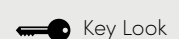
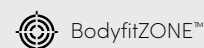
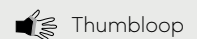
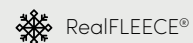
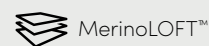
WOMEN'S

Adventure	17
Training	31
Life	41
Underwear	53
Base Layer	59

MEN'S

Adventure	71
Training	85
Life	93
Underwear	101
Base Layer	107

Kids	119
Socks	123
Accessories	133
Reference	139





WOMEN'S ADVENTURE

EXPLORE, NATURALLY

Modern, versatile performance wear for your adventures outdoors and in life. Designed for durability and ease of movement, in soft and breathable natural fibers.

ICEBREAKER ADVENTURE

FIRST LAYER AND MID LAYER

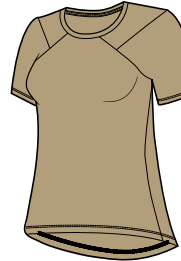
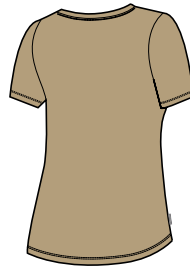
NEW STYLE

NATURE DYE GALEN SS CREWE

 - Corespun

Fabric	150gm jersey corespun/87% Merino/ 13% Nylon
Fit	Regular
Sizes	WXS-WXL

- Naturally dyed using an 80% reduction in water usage compared to traditional dyeing methods
- Corespun fabric for enhanced durability
- Offset shoulder seams prevent pack rub
- Forward set side seams for comfort
- Drop tail hem for added coverage
- Center back length: 67.1cm/26½", size M
- Icebreaker pip label



105010216
ALMOND
NEW

105010438
TRUE INDIGO LT
NEW

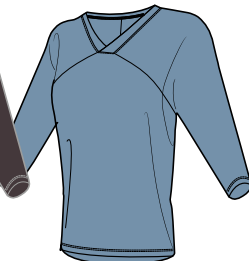


NATURE DYE GALEN 3Q SLEEVE

 - Corespun

Fabric	150gm jersey corespun/87% Merino/ 13% Nylon
Fit	Regular
Sizes	WXS-WXL

- Naturally dyed using an 80% reduction in water usage compared to traditional dyeing methods
- Corespun fabric for enhanced durability
- Soft V-neck
- Offset shoulder seams prevent pack rub
- Forward set side seams for comfort
- Dolman three-quarter sleeve construction with dropped armhole
- Center back length: 67.6cm/26½", size M
- Icebreaker pip label



105087020
TANNIN
NEW

105087438
TRUE INDIGO LT
NEW

NEW STYLE

SAIGE LS HALF ZIP



Fabric	260gm jersey/97% Merino/3% LYCRA®
Fit	Regular
Sizes	WXS-WXL

- LYCRA® content for stretch and mobility
- Concealed center front zip for temperature regulation
- Offset shoulder seams prevent pack rub
- Forward set side seams for comfort
- Zippered hand pockets
- Drop tail hem for added coverage
- Center back length: 67.1cm/26½", size M
- Icebreaker heat transfer logo



105039003
MONSOON
NEW

105039432
BLUE SPRUCE
NEW

105039427
ESTATE BLUE
NEW



NEW STYLE

ICEBREAKER ADVENTURE

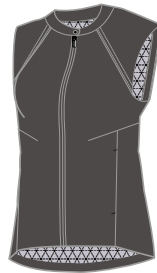
OUTER LAYER

TROPOS VEST

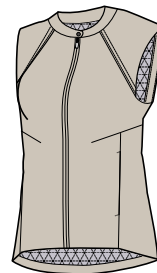
 - MerinoLOFT™

Fabric Shell	65gm woven/52% Recycled Nylon/48% Nylon/PFC-free DWR finish
Fabric Insulation	100gm MerinoLOFT™
Fabric Lining	44gm woven/100% Recycled Nylon
Fit	Regular
Sizes	WXS-WXL

- Recycled nylon content for durability
- Reverse coil center front zip with storm flap
- Offset shoulder seams prevent pack rub
- Zippered hand pockets
- Packable into right hand pocket
- Center back length: 70cm/27½", size M
- Icebreaker screen print logo



105055003
MONSOON
NEW
L



105055212
BRITISH TAN
NEW
L

 WIND RESISTANT  WATER REPELLENT

NEW STYLE

TROPOS JACKET

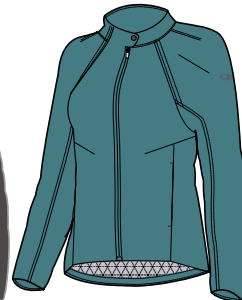
 - MerinoLOFT™

Fabric Shell	65gm woven/52% Recycled Nylon/48% Nylon/PFC-free DWR finish
Fabric Insulation	100gm MerinoLOFT™
Fabric Lining	44gm woven/100% Recycled Nylon
Fit	Regular
Sizes	WXS-WXL

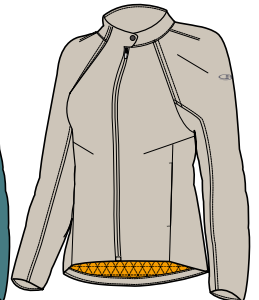
- Recycled nylon content for durability
- Snap closure neckline
- Reverse coil center front zip with storm flap
- Offset shoulder seams and no quilting prevent pack rub
- Raglan sleeve construction for mobility
- Zippered hand pockets
- Packable into right hand pocket
- Drop tail hem for added coverage
- Center back length: 71.6cm/28½", size M
- Icebreaker screen print logo



105044003
MONSOON
NEW
L



105044432
BLUE SPRUCE
NEW
L



105044212
BRITISH TAN
NEW
L

 WIND RESISTANT  WATER REPELLENT

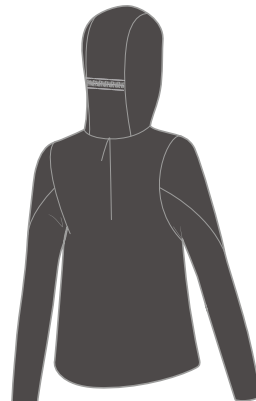
NEW STYLE

TROPOS HOODED WINDBREAKER

 - Corespun

Fabric Shell	65gm woven/52% Recycled Nylon/48% Nylon/PFC-free DWR finish
Fabric Lining	150gm eyelet corespun/84% Merino/16% Nylon
Fit	Regular
Sizes	WXS-WXL

- Recycled nylon content for durability
- Merino eyelet lining for ventilation
- Corespun fabric lining for enhanced durability
- Adjustable hood with drawcord
- Reverse coil center front zip with storm flap
- Asymmetrical center front zip prevents chafing
- Offset shoulder seams prevent pack rub
- Zippered hand pockets
- Adjustable hem with drawcord
- Center back length: 69.2cm/27¼", size M
- Icebreaker screen print logo



105045003
MONSOON
NEW
L



105045805
SUN
NEW
L

 WIND RESISTANT  WATER REPELLENT

NEW STYLE

ICEBREAKER ADVENTURE - SEASONAL

MID LAYER

AWAY II LS ZIP HOOD

NEW STYLE



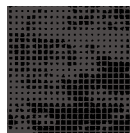
Fabric Solid	250gm jacquard/100% Merino
Fabric Jacquard	250gm double jersey jacquard/100% Merino
Fit	Regular
Sizes	WXS-WXL

- Fitted hood for warmth and protection
- Reverse coil center front zip
- Offset shoulder seams prevent pack rub
- Raised zippered hand pockets
- Drop tail hem for added coverage
- Center back length: 69.6cm/27½", size M
- Icebreaker tonal embroidered logo

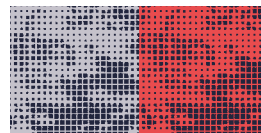


105040003
JACQUARD
MONSOON
NEW

105040B15
JACQUARD
MIDNIGHT NAVY/FIRE
NEW



JACQUARD



JACQUARD

ICEBREAKER ADVENTURE - SEASONAL

MID LAYER

DESCENDER LS ZIP

 - RealFLEECE®  - Corespun

Fabric Main 240gm textured brushed terry
RealFLEECE®/84% Merino/
9% Nylon/7% LYCRA®

Fabric Panels 200gm unbrushed terry
corespun/88% Merino/
9% Nylon/3% LYCRA®

Fit Slim

Sizes WXS-WXL

- Channeled fleece provides warmth and temperature regulation
- Corespun fabric for enhanced durability
- LYCRA® content for stretch and mobility
- Reverse coil center front zip
- Zipper chin guard and interior storm flap prevent chafing
- Flatlock seams prevent chafing
- Offset shoulder seams prevent pack rub
- Forward set side seams for comfort
- Fold-over cozy cuffs for added warmth
- Zippered hand pockets
- Drop tail hem for added coverage
- Center back length: 68.2cm/26¾", size M
- Icebreaker tonal screenprint logo



DESCENDER LS ZIP HOOD

 - RealFLEECE®  - Corespun

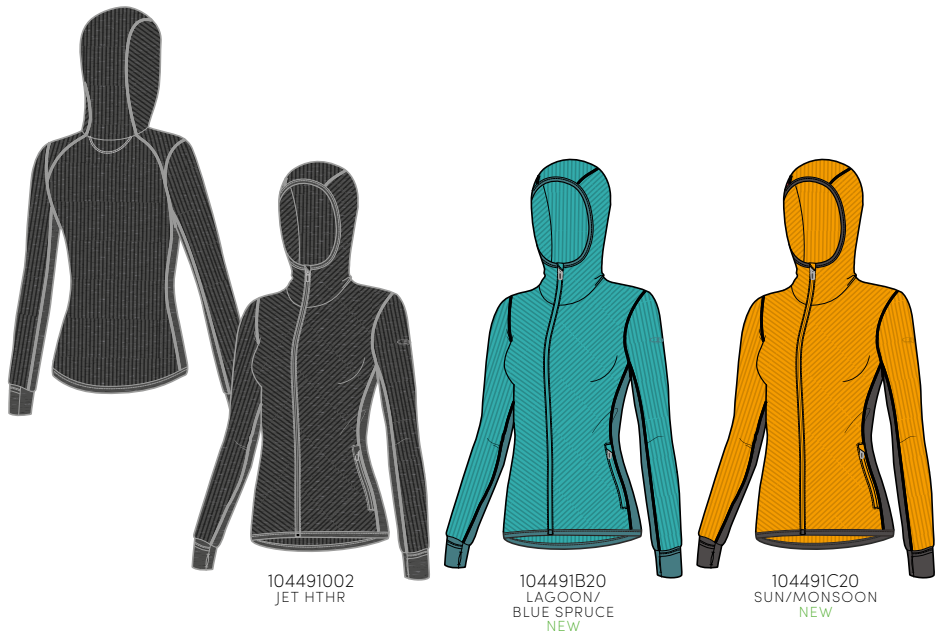
Fabric Main 240gm textured brushed terry
RealFLEECE®/84% Merino/
9% Nylon/7% LYCRA®

Fabric Panels 200gm unbrushed terry
corespun/88% Merino/
9% Nylon/3% LYCRA®

Fit Slim

Sizes WXS-WXL

- Channeled fleece provides warmth and temperature regulation
- Corespun fabric for enhanced durability
- LYCRA® content for stretch and mobility
- Fitted hood for warmth and protection
- Reverse coil center front zip
- Zipper chin guard and interior storm flap prevent chafing
- Flatlock seams prevent chafing
- Offset shoulder seams prevent pack rub
- Forward set side seams for comfort
- Fold-over cozy cuffs for added warmth
- Zippered hand pockets
- Drop tail hem for added coverage
- Center back length: 68.2cm/26¾", size M
- Icebreaker tonal screenprint logo



ICEBREAKER ADVENTURE - SEASONAL

BOTTOMS

PERSIST SHORTS

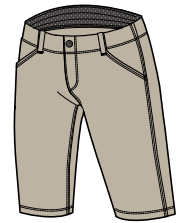
 WATER REPELLENT

Fabric Main	138gm woven/60% Nylon/35% Merino/5% Spandex/PFC-free DWR finish
Fabric Waistband	145gm eyelet corespun/51% Merino/34% TENCEL®/15% Nylon
Fit	Regular
Sizes	26-33

- Nylon outer face for durability with Merino next to skin
- Spandex content for stretch and mobility
- Internal Cool-Lite™ eyelet lined waistband for faster wicking and comfort
- Corespun fabric in waistband for enhanced durability
- Contour waist for fit and comfort
- Internal drawcords for adjustability
- Front fly with zip closure
- Gusset for comfort and mobility
- Hand pockets
- Zippered side stash pocket
- Zippered back pockets
- Inseam: 22.6 cm/9", size 29
- Icebreaker pip label



104080012
MONSOON



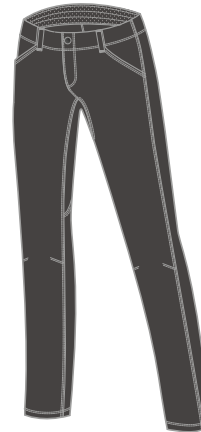
104080212
BRITISH TAN
NEW

PERSIST PANTS

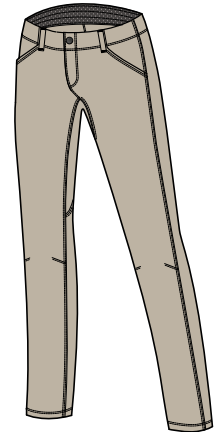
 WATER REPELLENT

Fabric Main	138gm woven/60% Nylon/35% Merino/5% Spandex/PFC-free DWR finish
Fabric Waistband	145gm eyelet corespun/51% Merino/34% TENCEL®/15% Nylon
Fit	Regular
Sizes	26-33

- Nylon outer face for durability with Merino next to skin
- Spandex content for stretch and mobility
- Internal Cool-Lite™ eyelet lined waistband for faster wicking and comfort
- Corespun fabric in waistband for enhanced durability
- Contour waist for fit and comfort
- Internal drawcords for adjustability
- Front fly with zip closure
- Articulated knee seams for enhanced range of motion
- Gusset for comfort and mobility
- Hand pockets
- Zippered side stash pocket
- Zippered back pockets
- Inseam: 80.4cm/31¾", size 29
- Icebreaker pip label



104081003
MONSOON



104081212
BRITISH TAN
NEW

ICEBREAKER ADVENTURE - ACTIVITY AND MOUNTAINS

FIRST LAYER

TECH LITE SS LOW CREWE - ARTIST TEES

© - Corespun

Fabric 150gm jersey corespun/
87% Merino/13% Nylon

Fit Regular

Sizes WXS-WXL

- Corespun fabric for enhanced durability
- Soft open neck
- Offset shoulder seams prevent pack rub
- Center back length: 67.2cm/26¼", size M
- Icebreaker pip label



TECH LITE SS LOW CREWE
CADENCE PATHS

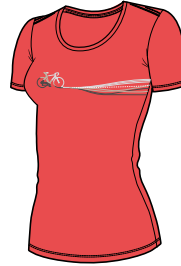
Artist: Damon Watters



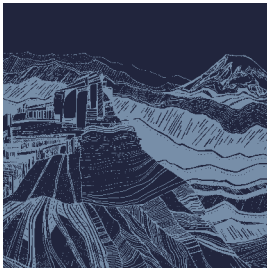
104997401
CADENCE PATHS
MIDNIGHT NAVY
NEW



104997511
CADENCE PATHS
ORCHID
NEW



104997618
CADENCE PATHS
FIRE
NEW



TECH LITE SS LOW CREW
PCT SKETCHBOOK

Artist: Lindsey Fox



104999401
PCT SKETCHBOOK
MIDNIGHT NAVY
NEW



104999618
PCT SKETCHBOOK
FIRE
NEW

ICEBREAKER ADVENTURE - ACTIVITY AND MOUNTAINS

FIRST LAYER

TECH LITE SS SCOOP - ARTIST TEES

 - Corespun

Fabric	150gm jersey corespun/ 87% Merino/13% Nylon
Fit	Regular
Sizes	WXS-WXL

- Corespun fabric for enhanced durability
- Feminine scoop neck
- Offset shoulder seams prevent pack rub
- Center back length: 67.2cm/26¼", size M
- Icebreaker pip label



TECH LITE SS SCOOP
PINNACLE

Artist: Jennifer Cooke



105006401
PINNACLE
MIDNIGHT NAVY
NEW



105006511
PINNACLE
ORCHID
NEW



105006435
PINNACLE
LAGOON
NEW



TECH LITE SS SCOOP
SINGLE LINE CAMP

Artist: Zachary Snyder



105009001
SINGLE LINE CAMP
BLACK
NEW



105009432
SINGLE LINE CAMP
BLUE SPRUCE
NEW



105009805
SINGLE LINE CAMP
SUN
NEW

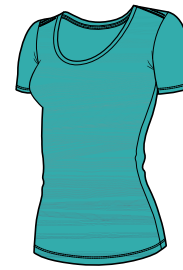


TECH LITE SS SCOOP
1000 LINES

Artist: Jennifer Cooke



105001017
1000 LINES
BLIZZARD HTHR
NEW



105001435
1000 LINES
LAGOON
NEW



105001427
1000 LINES
ESTATE BLUE
NEW

ICEBREAKER ADVENTURE - FLORA AND FAUNA

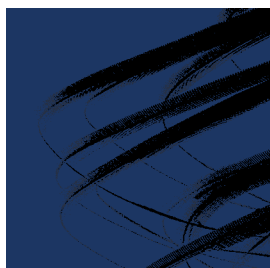
FIRST LAYER

TECH LITE TANK - ARTIST TANKS

© - Corespun

Fabric	150gm jersey corespun/ 87% Merino/13% Nylon
Fit	Regular
Sizes	WXS-WXL

- Corespun fabric for enhanced durability
- Feminine scoop neck
- Center back length: 65.2cm/25¾", size M
- Icebreaker pip label



TECH LITE TANK
BIRDS IN FLIGHT
Artist: Xavi Bou



105007017
BIRDS IN FLIGHT
BLIZZARD HTHR
NEW



105007427
BIRDS IN FLIGHT
ESTATE BLUE
NEW

TECH LITE SS LOW CREWE - ARTIST TEES

© - Corespun

Fabric	150gm jersey corespun/ 87% Merino/13% Nylon
Fit	Regular
Sizes	WXS-WXL

- Corespun fabric for enhanced durability
- Soft open neck
- Offset shoulder seams prevent pack rub
- Center back length: 67.7cm/26¾", size M
- Icebreaker pip label



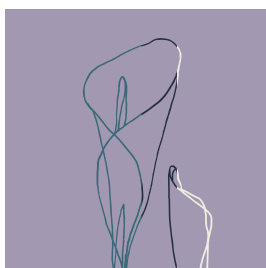
TECH LITE SS LOW CREWE
SUNRISE SUMMIT
Artist: Bill Carden-Horton



104998017
SUNRISE SUMMIT
BLIZZARD HTHR
NEW



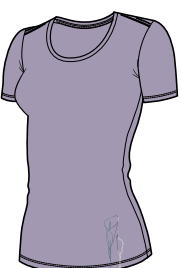
104998618
SUNRISE SUMMIT
FIRE
NEW



TECH LITE SS LOW CREWE
CALLA LILY
Artist: Bill Carden-Horton



105000004
CALLA LILY
GRITSTONE HTHR
NEW



105000511
CALLA LILY
ORCHID
NEW

ICEBREAKER ADVENTURE - FLORA AND FAUNA

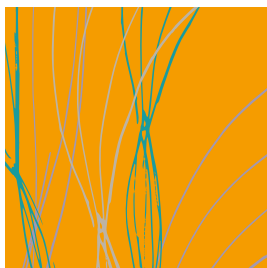
FIRST LAYER

TECH LITE SS SCOOP - ARTIST TEES

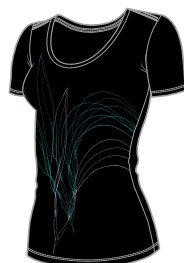
 - Corespun

Fabric	150gm jersey corespun/ 87% Merino/13% Nylon
Fit	Regular
Sizes	WXS-WXL

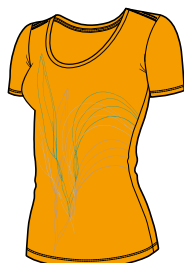
- Corespun fabric for enhanced durability
- Feminine scoop neck
- Offset shoulder seams prevent pack rub
- Center back length: 67.7cm/26¾", size M
- Icebreaker pip label



TECH LITE SS SCOOP
LEAF
Artist: Bill Carden-Horton



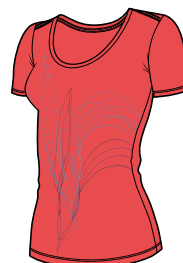
105003001
LEAF
BLACK
NEW



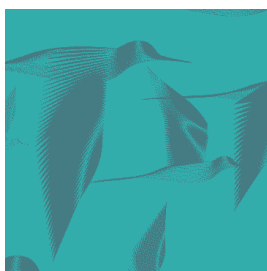
105003805
LEAF
SUN
NEW



105003427
LEAF
ESTATE BLUE
NEW



105003618
LEAF
FIRE
NEW



TECH LITE SS SCOOP
POAKA
Artist: Andrea Minini



105004004
POAKA
GRITSTONE HTHR
NEW



105004511
POAKA
ORCHID
NEW



105004435
POAKA
LAGOON
NEW

ICEBREAKER ADVENTURE - NATURAL ESSENTIALS

FIRST LAYER

TECH LITE SS LOW CREWE

 - Corespun

Fabric	150gm jersey corespun/ 87% Merino/13% Nylon
Fit	Regular
Sizes	WXS-WXL

- Corespun fabric for enhanced durability
- Soft open neck
- Offset shoulder seams prevent pack rub
- Center back length: 67.7cm/26¾", size M
- Icebreaker pip label

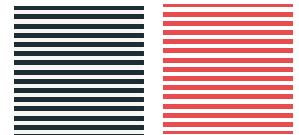


SPHERE TANK

 - Cool-Lite™  - Corespun

Fabric Solid	130gm jersey corespun/ 52% Merino/35% TENCEL®/ 13% Nylon
Fabric Stripe	135gm jersey corespun/ 47% TENCEL®/46% Merino/ 7% Nylon
Fit	Regular
Sizes	WXS-WXL

- Cool-Lite™ fabric for comfort in warm to hot conditions
- Corespun fabric for enhanced durability
- Feminine scoop neck
- Drop tail hem for added coverage
- Center back length: 69.5cm/27½", size M
- Icebreaker pip label



SPHERE SS LOW CREWE

 - Cool-Lite™  - Corespun

Fabric Solid	130gm jersey corespun/ 52% Merino/35% TENCEL®/ 13% Nylon
Fabric Stripe	135gm jersey corespun/ 47% Merino/46% TENCEL®/ 7% Nylon
Fit	Regular
Sizes	WXS-WXL

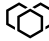

- Cool-Lite™ fabric for comfort in warm to hot conditions
- Corespun fabric for enhanced durability
- Soft open neck
- Drop tail hem for added coverage
- Center back length: 70.5cm/28" size M
- Icebreaker pip label



ICEBREAKER ADVENTURE - NATURAL ESSENTIALS

FIRST LAYER

SPHERE SS SCOOP

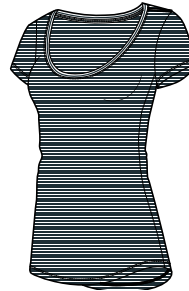
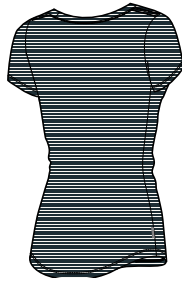
 - Cool-Lite™  - Corespun

Fabric 135gm jersey corespun/
47% TENCEL®/46% Merino/
7% Nylon

Fit Regular

Sizes WXS-WXL

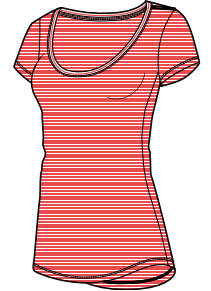
- Cool-Lite™ fabric for comfort in warm to hot conditions
- Corespun fabric for enhanced durability
- Feminine scoop neck
- Drop tail hem for added coverage
- Center back length: 70cm/27½", size M
- Icebreaker pip label



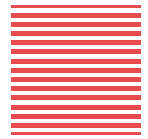
104679018
STRIPE
PANTHER



104679435
STRIPE
LAGOON
NEW



104679618
STRIPE
FIRE
NEW



SPHERE LS LOW CREWE

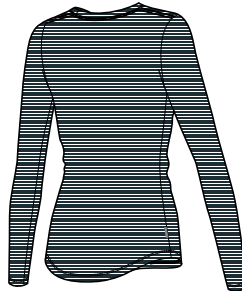
 - Cool-Lite™  - Corespun

Fabric 135gm jersey corespun/
47% Merino/46% TENCEL®/
7% Nylon

Fit Regular

Sizes WXS-WXL

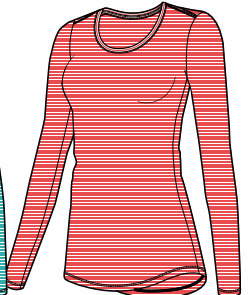
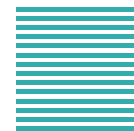
- Cool-Lite™ fabric for comfort in warm to hot conditions
- Corespun fabric for enhanced durability
- Soft open neck
- Drop tail hem for added coverage
- Center back length: 70.5cm/27¾", size M
- Icebreaker pip label



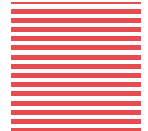
104677018
STRIPE
PANTHER



104677435
STRIPE
LAGOON
NEW



104677618
STRIPE
FIRE
NEW



ICEBREAKER ADVENTURE - NATURAL ESSENTIALS

MID LAYER

QUANTUM II LS ZIP HOOD

NEW STYLE



Fabric Main	250gm terry/98%Merino/ 2% LYCRA®
Fabric Hood lining	200gm jersey/100% Merino
Fit	Slim
Sizes	WXS-WXL

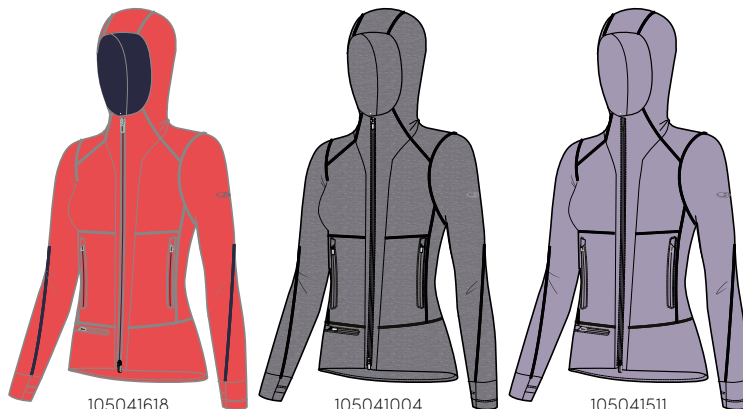
- LYCRA® content for stretch and mobility
- Fitted hood for warmth and protection
- Reverse coil center front 2-way zip with storm flap
- Flatlock seams prevent chafing
- Forward set side seams for comfort
- Raised zippered hand pockets
- Zippered stash pocket at waistband
- Drop tail hem for added coverage
- Center back length: 68.1cm/26¾", size M
- Icebreaker heat transfer logo



105041001
BLACK
NEW

105041432
BLUE SPRUCE
NEW

105041427
ESTATE BLUE
NEW



105041618
FIRE
NEW

105041004
GRITSTONE HTHR
NEW

105041511
ORCHID
NEW





WOMEN'S TRAINING

MOVE, NATURALLY

High-performance natural fibers that move, stretch and work with your body. Providing the ultimate comfort, breathability and odor-management for a training experience that is closer to nature.

ICEBREAKER TRAINING – SEAMLESS

FIRST LAYER

MOTION SEAMLESS TANK

NEW STYLE

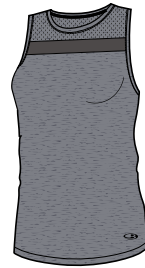
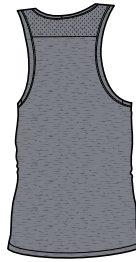


Fabric 155gm tubular knit/35% Merino/
35% TENCEL®/18% Polyester/
12% Nylon

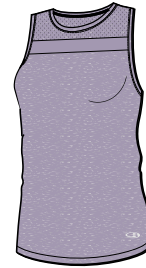
Fit Regular

Sizes WXS-WXL

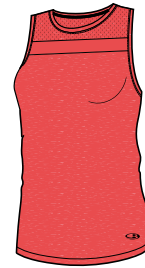
- New seamless construction for mobility and to prevent chafing
- Cool-Lite™ fabric for faster wicking
- Nylon and polyester content for durability
- Seamless mesh panels for enhanced ventilation
- Flatlock seams prevent chafing
- Wide open racerback for comfort
- Center back length: 65.5cm/25¾", size M
- Icebreaker reflective heat transfer logo



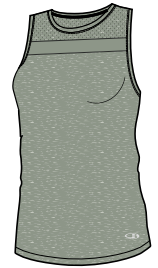
105011031
PANTHER HTHR
NEW



105011512
ORCHID HTHR
NEW



105011627
FIRE HTHR
NEW



105011313
SHALE HTHR
NEW



MOTION SEAMLESS SS CREWE

NEW STYLE

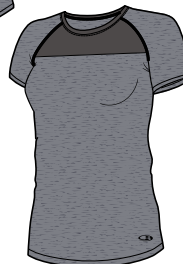


Fabric 155gm tubular knit/35% Merino/
35% TENCEL®/18% Polyester/
2% Nylon

Fit Regular

Sizes WXS-WXL

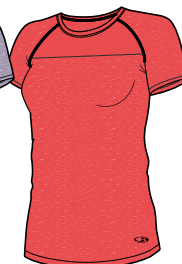
- New seamless construction for mobility and to prevent chafing
- Cool-Lite™ fabric for faster wicking
- Nylon and polyester content for durability
- Seamless mesh panels for enhanced ventilation
- Flatlock seams prevent chafing
- Raglan sleeve construction for mobility
- Icebreaker reflective heat transfer logo
- Center back length: 69cm/27¼", size M
- Icebreaker reflective heat transfer logo



105012031
PANTHER HTHR
NEW



105012512
ORCHID HTHR
NEW



105012627
FIRE HTHR
NEW



105012313
SHALE HTHR
NEW



MOTION SEAMLESS LS CREWE

NEW STYLE



Fabric 155gm tubular knit/35% Merino/
35% TENCEL®/18% Nylon/
12% Polyester

Fit Regular

Sizes WXS-WXL

- New seamless construction for mobility and to prevent chafing
- Cool-Lite™ fabric for faster wicking
- Nylon and polyester content for durability
- Seamless mesh panels for enhanced ventilation
- Flatlock seams prevent chafing
- Raglan sleeve construction for mobility
- Center back length: 69cm/27¼", size M
- Icebreaker reflective heat transfer logo



105013031
PANTHER HTHR
NEW



105013313
SHALE HTHR
NEW

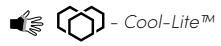


ICEBREAKER TRAINING – SEAMLESS

FIRST LAYER

MOTION SEAMLESS LS HALF ZIP

NEW STYLE

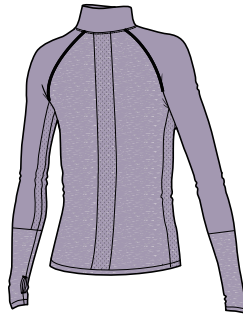


Fabric 155gm tubular knit/35% Merino/
35% TENCEL®/18% Nylon/
12% Polyester

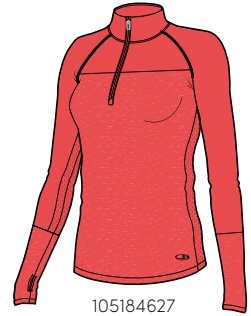
Fit Regular

Sizes WXS-WXL

- New seamless construction for mobility and to prevent chafing
- Cool-Lite™ fabric for faster wicking
- Nylon and polyester content for durability
- Seamless mesh panels for enhanced ventilation
- Reflective zip for visibility in low light and temperature regulation
- Flatlock seams prevent chafing
- Raglan sleeve construction for mobility
- Center back length: 69cm/27¼", size M
- Icebreaker reflective heat transfer logo



105184512
ORCHID HTHR
NEW



105184627
FIRE HTHR
NEW

ICEBREAKER TRAINING – SEAMLESS BOTTOMS

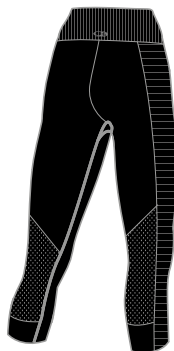
MOTION SEAMLESS 3Q TIGHTS

NEW STYLE

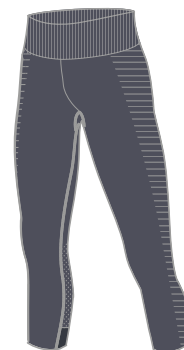


Fabric	370gm tubular knit/35% Merino/ 35% TENCEL®/25% Nylon/5% LYCRA®
Fit	Slim
Sizes	WXS-WXL

- New seamless construction for mobility and to prevent chafing
- Cool-Lite™ fabric for faster wicking
- LYCRA® content for stretch and mobility
- Nylon content for durability
- Mesh panels for enhanced ventilation
- High waistband for extra coverage
- Flatlock seams prevent chafing
- Gusset for comfort and mobility
- Inseam: 44.5cm/17½", size M
- Icebreaker knitted logo



105018001
BLACK
NEW



105018018
PANTHER
NEW



MOTION SEAMLESS TIGHTS

NEW STYLE

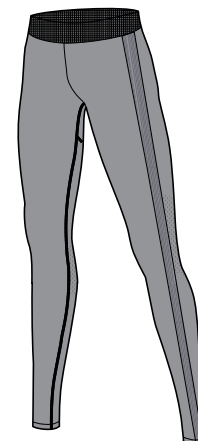


Fabric	370gm tubular knit/35% Merino/ 35% TENCEL®/25% Nylon/ 5% LYCRA®
Fit	Slim
Sizes	WXS-WXL

- New seamless construction for mobility and to prevent chafing
- Cool-Lite™ fabric for faster wicking
- LYCRA® content for stretch and mobility
- Nylon content for durability
- Seamless mesh panels for enhanced ventilation
- Waistband sits comfortably at hip
- Flatlock seams prevent chafing
- Stash pocket at inner left leg for storage
- Reflective detail at back leg for visibility in low light
- Gusset for comfort and mobility
- Inseam: 62cm/24½", size M
- Icebreaker knitted logo



105017001
BLACK
NEW



105017025
MINERAL
NEW

MOTION SEAMLESS HIGH RISE TIGHTS

NEW STYLE

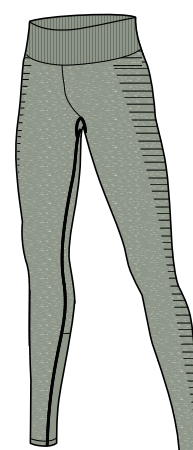
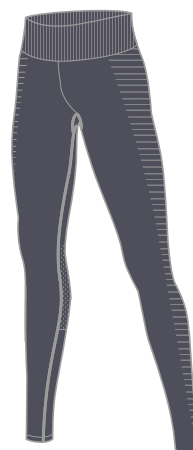


Fabric	370gm tubular knit/35% Merino/ 35% TENCEL®/25% Nylon/5% LYCRA®
Fit	Slim
Sizes	WXS-WXL

- New seamless construction for mobility and to prevent chafing
- Cool-Lite™ fabric for faster wicking
- LYCRA® content for stretch and mobility
- Nylon content for durability
- Mesh panels for enhanced ventilation
- High waistband for extra coverage
- Flatlock seams prevent chafing
- Gusset for comfort and mobility
- Inseam: 62cm/24½", size M
- Icebreaker knitted logo



105019018
PANTHER
NEW



105019313
SHALE HTHR
NEW



ICEBREAKER TRAINING - NATURAL RUNNING

FIRST LAYER

AMPLIFY RACERBACK TANK

 - Cool-Lite™  - Corespun

Fabric Main	130gm jersey corespun/ 52% Merino/35% TENCEL®/ 13% Nylon
Fabric Panels	135gm eyelet corespun/ 51% Merino/35% TENCEL®/ 14% Nylon
Fit	Regular
Sizes	WXS-WXL

- Cool-Lite™ fabric for faster wicking and comfort in warm to hot conditions
- Corespun fabric for enhanced durability
- Dropped armhole
- Drop tail hem for added coverage
- Eyelet mesh back for enhanced ventilation
- Center back length: 68.4cm/27", size M
- Icebreaker reflective heat transfer logo



AMPLIFY SS LOW CREWE

 - Cool-Lite™  - Corespun

Fabric Main	130gm jersey corespun/ 52% Merino/35% TENCEL®/ 13% Nylon
Fabric Panels	135gm eyelet corespun/ 51% Merino/35% TENCEL®/ 14% Nylon
Fit	Regular
Sizes	WXS-WXL

- Cool-Lite™ fabric for faster wicking and comfort in warm to hot conditions
- Corespun fabric for enhanced durability
- Eyelet mesh back for enhanced ventilation
- Drop tail hem for added coverage
- Center back length: 68.9cm/27", size M
- Icebreaker reflective heat transfer logo



AMPLIFY LS HALF ZIP

 - Cool-Lite™  - Corespun

Fabric Main	130gm jersey corespun/ 52% Merino/35% TENCEL®/ 13% Nylon
Fabric Panels	135gm eyelet corespun/ 51% Merino/35% TENCEL®/ 14% Nylon
Fit	Regular
Sizes	WXS-WXL

- Cool-Lite™ fabric for faster wicking and comfort in warm to hot conditions
- Corespun fabric for enhanced durability
- Eyelet mesh back for enhanced ventilation
- Reflective zip for visibility in low light and temperature regulation
- Drop tail hem for added coverage
- Center back length: 69.5cm/27¼", size M
- Icebreaker reflective heat transfer logo



ICEBREAKER TRAINING - NATURAL RUNNING

OUTER LAYER

RUSH VEST

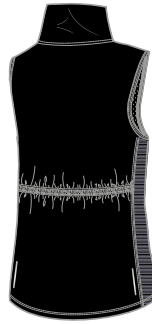
 - Cool-Lite™  - Corespun

Fabric Main	55gm woven ripstop/100% Recycled Polyester/PFC-free DWR finish
Fabric Lining	145gm eyelet corespun/51% Merino/34% TENCEL®/15% Nylon
Fabric Panels	155gm jersey corespun/50% Merino/33% TENCEL®/12% Nylon/5% Spandex
Fit	Regular
Sizes	WXS-WXL

- Recycled polyester content for faster wicking and drying
- Cool-Lite™ eyelet lining for faster wicking
- Corespun fabric for enhanced durability
- Reflective center front zip for visibility in low light
- Zipper chin guard and interior storm flap prevent chafing
- Offset shoulder seams prevent pack rub
- Zippered hand pockets
- Packable into right hand pocket
- Drop tail hem for added coverage
- Adjustable hem and back with drawcord
- Center back length: 68.5cm/27", size M
- Icebreaker reflective screenprint logo

 WIND RESISTANT  WATER REPELLENT

UPDATED STYLE



105024001
BLACK
NEW


105024025
DYESCAPE
MINERAL
NEW




DYESCAPE

RUSH WINDBREAKER

 - Cool-Lite™  - Corespun

Fabric Main	55gm woven ripstop/100% Recycled Polyester/PFC-free DWR finish
Fabric Lining	145gm eyelet corespun/51% Merino/34% TENCEL®/15% Nylon
Fabric Panels	155gm jersey corespun/50% Merino/33% TENCEL®/12% Nylon/5% Spandex
Fit	Regular
Sizes	WXS-WXL

- Recycled polyester content for faster wicking and drying
- Cool-Lite™ eyelet lining for faster wicking
- Corespun fabric for enhanced durability
- Reflective center front zip for visibility in low light
- Zipper chin guard and interior storm flap prevent chafing
- Offset shoulder seams prevent pack rub
- Zippered hand pockets
- Packable into right hand pocket
- Drop tail hem for added coverage
- Adjustable hem with drawcord
- Vents at upper back for enhanced breathability
- Center back length: 70.8cm/27¾", size M
- Icebreaker reflective screenprint logo

 WIND RESISTANT  WATER REPELLENT

NEW STYLE



105025001
BLACK
NEW


105025025
DYESCAPE
MINERAL
NEW




DYESCAPE

ICEBREAKER TRAINING - NATURAL RUNNING

BOTTOMS

IMPULSE RUNNING SHORTS

 - Cool-Lite™  - Corespun

 WATER REPELLENT

UPDATED STYLE

Fabric Main	56gm woven/46% Recycled Nylon/44% Nylon/ 10% LYCRA®/PFC-free DWR finish
Fabric Lining	145gm eyelet corespun/51% Merino/34% TENCEL®/ 15% Nylon
Fit	Regular
Sizes	WXS-WXL

- Updated fabric
- Recycled nylon fabric for breathability and optimal comfort in all conditions
- LYCRA® content for stretch and mobility
- Cool-Lite™ eyelet liner for comfort in warm to hot conditions
- Corespun fabric for enhanced durability
- Cool-Lite™ eyelet lined waistband for faster wicking and comfort
- Waistband with internal drawcord for adjustability
- Gusset for comfort and mobility
- Power mesh stash pocket inside liner of short
- Inseam: 8.6cm/3", size M
- Icebreaker reflective heat transfer logo



104618010
BLACK
NEW

ICEBREAKER TRAINING - NATURAL TRAINING

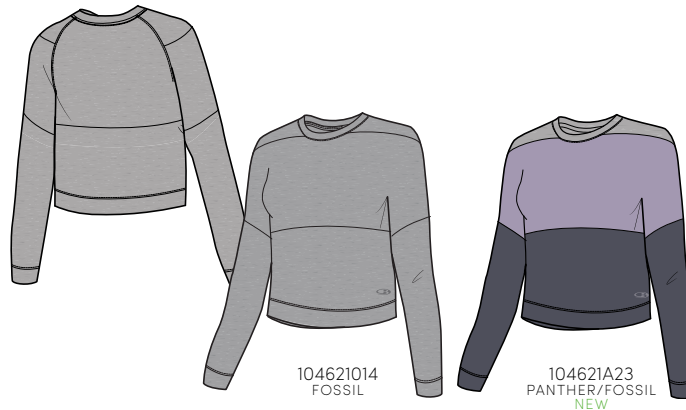
MID LAYER

MOMENTUM LS CREWE

 - Cool-Lite™  - Corespun

Fabric	260gm terry corespun/ 44% TENCEL®/43% Merino/ 7% LYCRA®/6% Nylon
Fit	Relaxed
Sizes	WXS-WXL

- Cool-Lite™ fabric for faster wicking and comfort in warm to hot conditions
- Corespun fabric for enhanced durability
- LYCRA® content for stretch and mobility
- Forward set shoulder seams for comfort
- Center back length: 61.1cm/24", size M
- Icebreaker tonal embroidered logo



104621014
FOSSIL

104621A23
PANTHER/FOSSIL
NEW

MOMENTUM HOODED PULLOVER

 - Cool-Lite™  - Corespun

Fabric	260gm terry corespun/ 44% TENCEL®/43% Merino/ 7% LYCRA®/6% Nylon
Fit	Relaxed
Sizes	WXS-WXL

- Cool-Lite™ fabric for faster wicking and comfort in warm to hot conditions
- Corespun fabric for enhanced durability
- LYCRA® content for stretch and mobility
- Loose fitting hood with drawcord adjustment
- Raglan sleeve construction for mobility
- Kangaroo pocket
- Droptail for extra coverage
- Center back length: 68.6cm/27", size L
- Icebreaker tonal embroidered logo



104892014
FOSSIL

104892018
PANTHER
NEW

104892511
ORCHID
NEW



ICEBREAKER TRAINING - NATURAL TRAINING

BOTTOMS

IMPULSE TRAINING SHORTS

WATER REPELLENT

UPDATED STYLE

 - Cool-Lite™  - Corespun

Fabric Main	56gm woven/46% Recycled Nylon/ 44% Nylon/10% LYCRA®/PFC-free DWR finish
Fabric Lining	145gm eyelet corespun/51% Merino/ 34% TENCEL®/15% Nylon
Fit	Regular
Sizes	WXS-WXL



104625010
BLACK
NEW

- Updated fabric
- Recycled nylon fabric for breathability and optimal comfort in all conditions
- LYCRA® content for stretch and mobility
- Cool-Lite™ eyelet liner for faster wicking
- Corespun fabric for enhanced durability
- Internal Cool-Lite™ eyelet lined waistband for faster wicking and comfort
- Waistband with internal drawcord for adjustability
- Gusset for comfort and mobility
- Stash pocket inside liner of short
- Inseam: 8.6cm/3", size M
- Icebreaker reflective heat transfer logo



WOMEN'S LIFE

LIVE, NATURALLY

Easy-going lifestyle staples made for versatility and comfort. Your go-to pieces for whatever your day brings, with a focus on sustainability and natural innovations.

ICEBREAKER LIFE - NATURE DYE

FIRST LAYER

NEW STYLE

NATURE DYE DRAYDEN TANK

 - Cool-Lite™  - Corespun

Fabric 130gm jersey corespun/52% Merino/
35% TENCEL®/13% Nylon

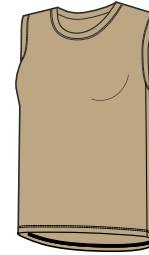
Fit Relaxed

Sizes WXS-WXL

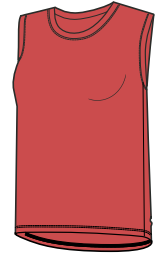
- Naturally dyed using an 80% reduction in water usage compared to traditional dyeing methods
- Cool-Lite™ fabric for comfort in cool to hot conditions
- Corespun fabric for enhanced durability
- Soft open neck
- Dropped relaxed armhole
- Center back length: 72.5cm/28½", size M
- Icebreaker pip logo



105033019
TANNIN
NEW



105033216
ALMOND
NEW



105033621
MADDER ROOT
NEW

NATURE DYE DRAYDEN SS POCKET CREWE

NEW STYLE

 - Cool-Lite™  - Corespun

Fabric 130gm jersey corespun/52% Merino/
35% TENCEL®/13% Nylon

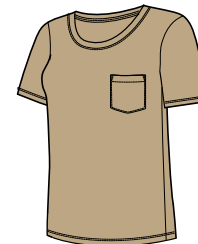
Fit Relaxed

Sizes WXS-WXL

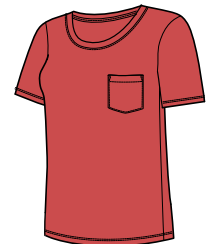
- Naturally dyed using an 80% reduction in water usage compared to traditional dyeing methods
- Cool-Lite™ fabric for comfort in cool to hot conditions
- Corespun fabric for enhanced durability
- Soft open neck
- Center back length: 68cm/26¾", size M
- Icebreaker pip logo



105067019
TANNIN
NEW



105067216
ALMOND
NEW



105067621
MADDER ROOT
NEW

NATURE DYE DRAYDEN LS CREWE

NEW STYLE

 - Cool-Lite™  - Corespun

Fabric Main 175gm jersey corespun/61% Merino/
19% TENCEL®/14% Nylon/6% LYCRA®

Fabric Neck, Cuffs, Hem 190gm 1x1 rib/65% Merino/20% TENCEL®/
15% Nylon

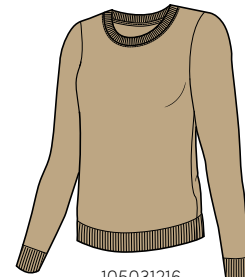
Fit Relaxed

Sizes WXS-WXL

- Naturally dyed using an 80% reduction in water usage compared to traditional dyeing methods
- Cool-Lite™ fabric for comfort in cool to hot conditions
- Corespun fabric for enhanced durability
- Ribbed neck, cuffs, and hem
- Center back length: 63.5cm/25", size M
- Icebreaker pip label



105031019
TANNIN
NEW



105031216
ALMOND
NEW

ICEBREAKER LIFE - NATURE DYE

MID LAYER

NATURE DYE HELLIERS LS CREWE

NEW STYLE

 - RealFLEECE®  - Corespun

Fabric Main 210gm brushed terry RealFLEECE®/
88% Merino/9% Nylon/3% LYCRA®

Fabric Neck, Cuffs, Hem 370gm 2x1 rib/98% Merino/2% LYCRA®

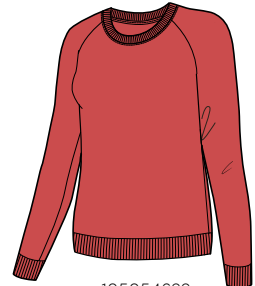
Fit Relaxed

Sizes WXS-WXL

- Naturally dyed using an 80% reduction in water usage compared to traditional dyeing methods
- Corespun fabric for enhanced durability
- LYCRA® content for stretch and mobility
- Raglan sleeve construction with rib cuffs
- Ribbed bottom hem
- Center back length: 68.6cm/27", size M
- Icebreaker pip logo



105054020
TANNIN
NEW



105054622
MADDER ROOT
NEW



ICEBREAKER LIFE - SEASONAL

FIRST LAYER

ELOWEN SS CREWE

 - Cool-Lite™  - Corespun

Fabric	165gm jersey corespun/65% Merino/ 22% TENCEL®/8% Nylon/5% LYCRA®
Fit	Relaxed
Sizes	WXS-WXL

- Alternating 100% merino and Cool-Lite™ stripe garments are dyed in a one-step process, reducing material and water waste
- 100% Merino dyes as a solid color while Cool-Lite™ dyes as heathered
- Cool-Lite™ fabric for comfort in warm to hot conditions
- LYCRA® content for stretch and mobility
- Soft open neck
- Offset shoulder seams for comfort
- Raglan cap sleeve construction with dropped armhole
- Drop tail hem for added coverage
- Center back length: 77cm/30¼", size M
- Icebreaker pip label



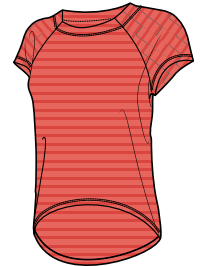
NEW STYLE



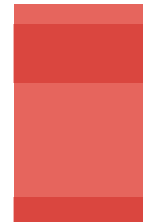
105026003
STRIPE
MONSOON
NEW



105026028
STRIPE
MERCURY
NEW



105026623
STRIPE
HIBISCUS
NEW



VIA SS SCOOP

 - Cool-Lite™  - Corespun

Fabric	130gm jersey corespun/ 52% Merino/35% TENCEL®/ 13% Nylon
Fit	Relaxed
Sizes	WXS-WXL

- Corespun fabric for enhanced durability
- Soft open neck
- Dolman short sleeve construction with dropped armhole
- Side split seam for ease of movement
- Center back length: 62.5cm/24½", size M
- Icebreaker pip label



104641034
MONSOON HTHR
NEW



104641032
WASH STRIPE
MERCURY HTHR
NEW



104641310
WASH STRIPE
SHALE
NEW



WASH STRIPE
PRINT



WASH STRIPE
PRINT

ICEBREAKER LIFE - SEASONAL

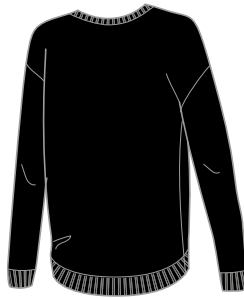
MID LAYER

NOVA SWEATER SWEATSHIRT

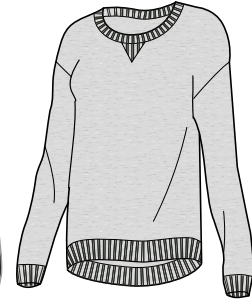


Fabric Main	12gg knit/50% Merino/ 50% TENCEL®
Fabric Neck/Cuff/Hem	12gg 1x2 rib/50% Merino/ 50% TENCEL®
Fit	Relaxed
Sizes	WXS-WXL

- Fully fashioned lifestyle sweater
- Cool-Lite™ yarn for comfort in cool to warm conditions
- Soft open neck
- Rib neck, sleeve cuffs and bottom hem
- Drop tail hem for added coverage
- Machine washable
- Center back length: 72.6cm/28½", size M



104643010
BLACK
NEW



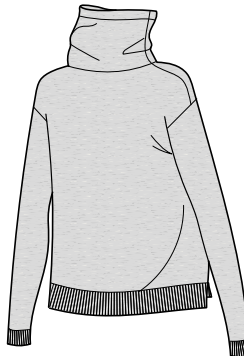
104643017
BLIZZARD HTHR

NOVA PULLOVER SWEATER



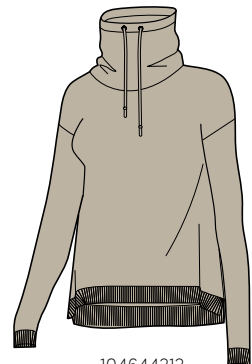
Fabric Main	7gg knit/50% Merino/ 50% TENCEL®
Fabric Cuff/Hem	7gg 1x1 rib/50% Merino/ 50% TENCEL®
Fit	Relaxed
Sizes	WXS-WXL

- Fully fashioned lifestyle sweater
- Cool-Lite™ yarn for comfort in cool to warm conditions
- Cowl neck with drawcord
- Rib sleeve cuffs and bottom hem
- Drop tail hem for added coverage
- Machine washable
- Center back length: 68cm/26¾", size M



104644017
BLIZZARD HTHR

L



104644212
BRITISH TAN
NEW

L

ICEBREAKER LIFE - SEASONAL

DRESSES AND JUMPSUITS

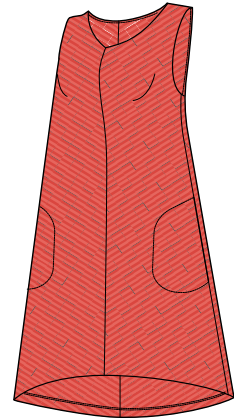
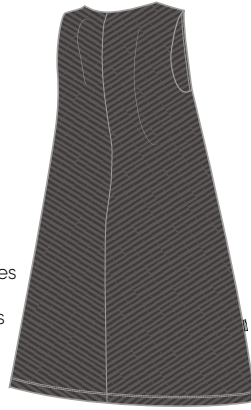
NEW STYLE

ELOWEN SLEEVELESS DRESS

 - Cool-Lite™  - Corespun

Fabric	165gm jersey corespun/72% Merino/ 17% TENCEL®/6% Nylon/5% LYCRA®
Fit	Relaxed
Sizes	WXS-WXL

- Alternating 100% merino and Cool-Lite™ stripe garments are dyed in a one-step process, reducing material and water waste
- 100% Merino dyes as a solid color while Cool-Lite™ dyes as heathered
- Cool-Lite™ fabric for comfort in warm to hot conditions
- LYCRA® content for stretch and mobility
- Soft V-neck
- Hand pockets
- Center back length: 97.4cm/38¼", size M
- Icebreaker pip label



105028003
STRIPE
MONSOON
NEW



105028623
STRIPE
HIBISCUS
NEW

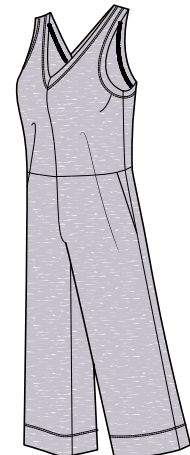
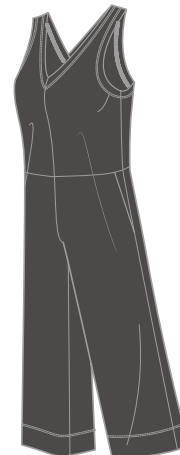


HANA JUMPSUIT

 - Cool-Lite™

Fabric	160gm jersey/61% Merino/19% TENCEL®/ 14% Nylon/6% LYCRA®
Fit	Relaxed
Sizes	WXS-WXL

- Cool-Lite fabric for comfort in warm to hot conditions
- Nylon content for durability
- LYCRA® content for stretch and mobility
- Deep V-neck
- Easy relaxed wide leg opening
- Can be worn true-to-size or sized-down for a tighter fit
- Inseam: 53.3cm/21", size M
- Icebreaker pip label



105027003
MONSOON
NEW

105027032
MERCURY HTHR
NEW



NEW STYLE

ICEBREAKER LIFE - SEASONAL

DRESSES AND JUMPSUITS

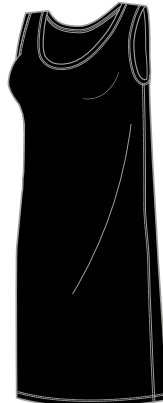
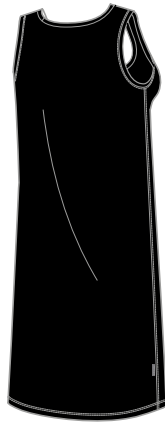
NEW STYLE

YANNI SLEEVELESS DRESS

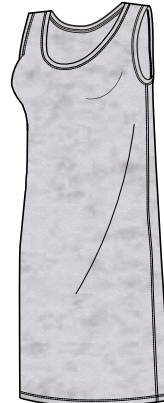


Fabric	160gm jersey/61% Merino/ 19% TENCEL®/14% Nylon/ 6% LYCRA®
Fit	Regular
Sizes	WXS-WXL

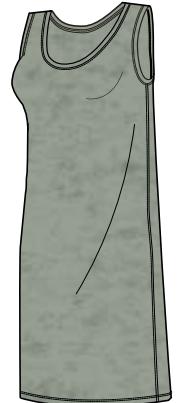
- Cool-Lite™ fabric for comfort in warm to hot conditions
- Nylon content for durability
- LYCRA® content for stretch and mobility
- Feminine scoop neck
- Center back length: 95.2cm/37½", size M
- Icebreaker pip label



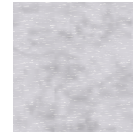
105181001
BLACK
NEW



105181032
DYE CLOUDS
MERCURY HTHR
NEW



105181310
DYE CLOUDS
SHALE
NEW



DYE CLOUDS



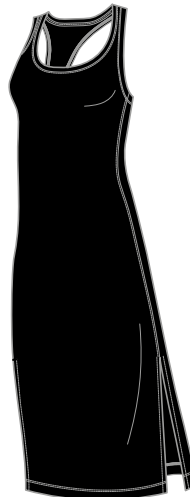
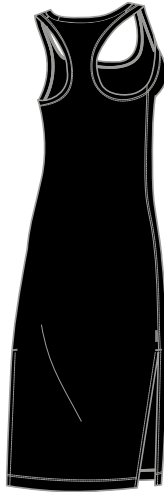
DYE CLOUDS

YANNI TANK MIDI DRESS

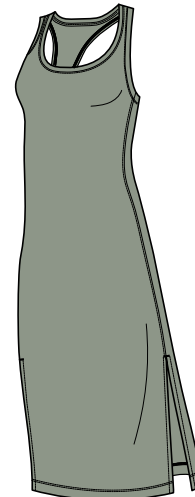


Fabric	160gm jersey/61% Merino/ 19% TENCEL®/14% Nylon/ 6% LYCRA®
Fit	Regular
Sizes	WXS-WXL

- Cool-Lite™ fabric for comfort in warm to hot conditions
- Nylon content for durability
- LYCRA® content for stretch and mobility
- Feminine scoop neck
- Side split for ease of movement
- Slight racerback for ease of movement
- Mid-calf length
- Center back length: 111.5cm/44", size M
- Icebreaker pip label



104631010
BLACK
NEW



104631310
SHALE
NEW

ICEBREAKER LIFE - SEASONAL

BOTTOMS AND SKIRTS

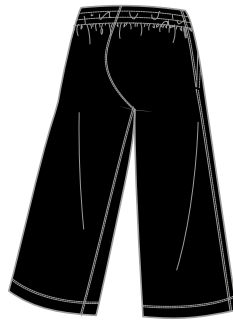
NEW STYLE

YANNI CULOTTE

 - Cool-Lite™

Fabric	160gm jersey/61% Merino/ 19% TENCEL®/14% Nylon/ 6% LYCRA®
Fit	Relaxed
Sizes	WXS-WXL

- Cool-Lite™ fabric for comfort in warm to hot conditions
- Nylon content for durability
- LYCRA® content for stretch and mobility
- Waistband with external drawcord for adjustability
- Easy relaxed wide leg opening
- Hand pockets
- Inseam: 58.6cm/23", size M
- Icebreaker pip label



105066001
BLACK
NEW



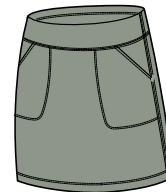
105066310
SHALE
NEW

YANNI SKIRT

 - Cool-Lite™

Fabric	160gm jersey/61% Merino/ 19% TENCEL®/14% Nylon/ 6% LYCRA®
Fit	Regular
Sizes	WXS-WXL

- Cool-Lite™ fabric for comfort in warm to hot conditions
- Nylon content for durability
- LYCRA® content for stretch and mobility
- Elastic waist with contoured shape for comfort
- Low profile single internal drawcord for adjustability
- Hand pockets
- Above knee length
- Outseam: 44.4cm/17½", size M
- Icebreaker pip label



104101001
BLACK

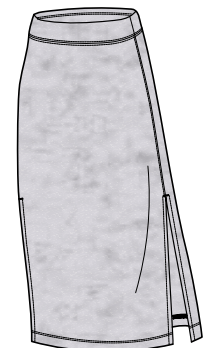
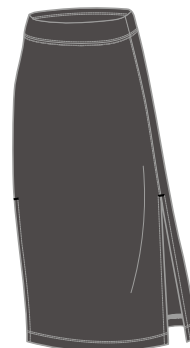
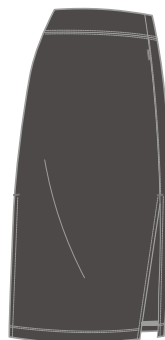
104101310
SHALE
NEW

YANNI MIDI SKIRT

 - Cool-Lite™

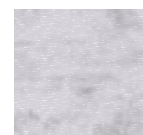
Fabric	160gm jersey/61% Merino/ 19% TENCEL®/14% Nylon/ 6% LYCRA®
Fit	Regular
Sizes	WXS-WXL

- Cool-Lite™ fabric for comfort in warm to hot conditions
- Nylon content for durability
- LYCRA® content for stretch and mobility
- Side split seam for ease of movement
- Below the knee length
- Outseam: 76.5cm/30", size M
- Icebreaker pip label



104629012
MONSOON
NEW

104629032
DYE CLOUDS
MERCURY HTHR
NEW



DYE CLOUDS

ICEBREAKER LIFE - SEASONAL

OUTERWEAR

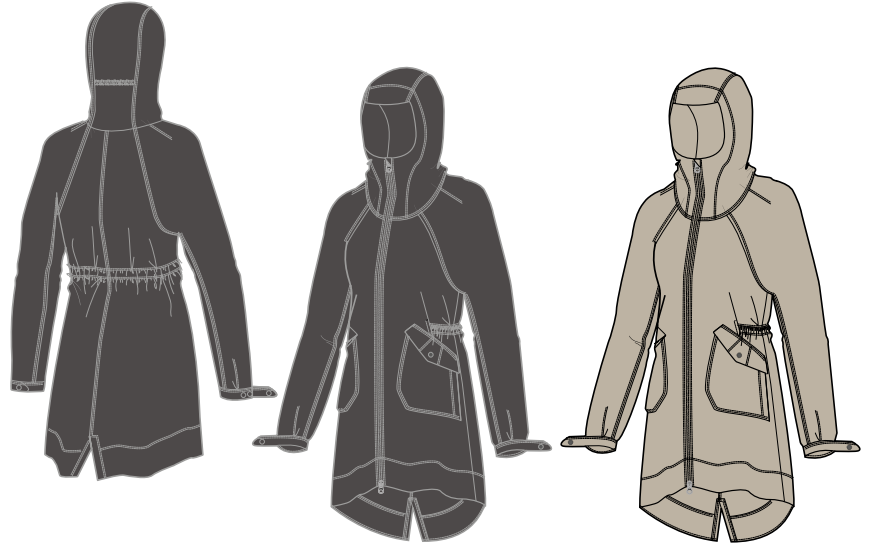
BRIAR HOODED ZIP PARKA

WATER REPELLENT

NEW STYLE

Fabric	138gm woven/60% Nylon/35% Merino/ 5% Spandex/PFC-free DWR finish
Fit	Relaxed
Sizes	WXS-WXL

- Nylon outer face for durability with Merino next to skin
- Spandex content for stretch and mobility
- Easy relaxed hood
- Metaluxe® vislon center front 2-way zip
- Adjustable drawcord at waist
- Offset shoulder seams for comfort
- Dropped relaxed armhole
- Cuffs with adjustable snap closure
- Vertical zippered hand pockets
- Horizontal hand pockets with flap and snap closure
- Drop tail hem with split back vent
- Center back length: 97.4cm/38¼", size M
- Icebreaker pip label



105037003
MONSOON
NEW

L

105037212
BRITISH TAN
NEW

L

ICEBREAKER LIFE - NATURAL ESSENTIALS

FIRST LAYER

RAVYN SS V

NEW STYLE

 - Corespun

Fabric	150gm jersey corespun/ 87% Merino/13% Nylon
Fit	Regular
Sizes	WXS-WXL

- Corespun fabric for enhanced durability
- Relaxed wide V-neck
- Center back length: 68cm/26¾", size M
- Icebreaker pip label



105032001
BLACK
NEW

105032002
JET HTHR
NEW

105032017
BLIZZARD HTHR
NEW

105032401
MIDNIGHT NAVY
NEW

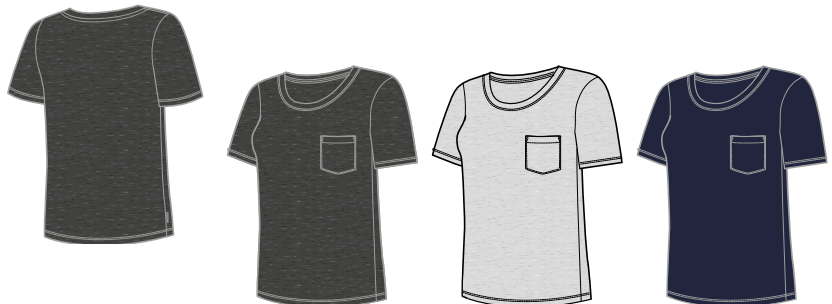
RAVYN SS POCKET CREWE

NEW STYLE

 - Corespun

Fabric	150gm jersey corespun/ 87% Merino/13% Nylon
Fit	Relaxed
Sizes	WXS-WXL

- Corespun fabric for enhanced durability
- Soft open neck
- Center back length: 68cm/26¾", size M
- Icebreaker pip label



105030002
JET HTHR
NEW

105030017
BLIZZARD HTHR
NEW

105030401
MIDNIGHT NAVY
NEW

RAVYN LS POCKET CREWE

NEW STYLE

 - Corespun

Fabric	150gm jersey corespun/ 87% Merino/13% Nylon
Fit	Relaxed
Sizes	WXS-WXL

- Corespun fabric for enhanced durability
- Soft open neck
- Center back length: 68cm/26¾", size M
- Icebreaker pip label



105029001
BLACK
NEW

105029017
BLIZZARD HTHR
NEW

105029401
MIDNIGHT NAVY
NEW

TECH LITE SS POLO

 - Corespun

Fabric	150gm jersey corespun/ 87% Merino/13% Nylon
Fit	Regular
Sizes	WXS-WXL

- Corespun fabric for enhanced durability
- Polo neckline with 3 button placket
- Offset shoulder seams prevent pack rub
- Set-in sleeve construction
- Drop tail hem for added coverage
- Center back length: 69.5cm/27¼", size M
- Icebreaker pip label



104689010
BLACK

104689017
BLIZZARD HTHR

104689423
MIDNIGHT NAVY
NEW

ICEBREAKER LIFE - NATURAL ESSENTIALS

MID LAYER AND BOTTOMS

LYDMAR LS ZIP

 - RealFLEECE®  - Corespun

Fabric Main	200gm brushed terry RealFLEECE®/87% Merino/10% Nylon/3% LYCRA®
Fabric Cuff/Hem	375gm 2x1 rib/96% Merino/4% LYCRA®
Fit	Relaxed
Sizes	WXS-WXL

- Corespun fabric for enhanced durability
- LYCRA® content for stretch and mobility
- Reverse coil center front zip
- Raglan sleeve construction with rib cuffs
- Zippered hand pockets
- Rib bottom hem
- Center back length: 67.4cm/26½", size M
- Icebreaker pip label

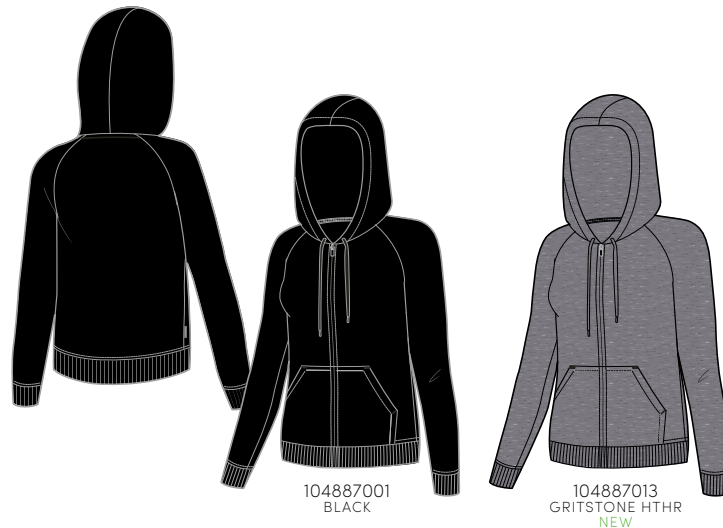


HELLIERS LS ZIP HOOD

 - RealFLEECE®  - Corespun

Fabric Main	200gm brushed terry RealFLEECE®/87% Merino/10% Nylon/3% LYCRA®
Fabric Cuff/Hem	375gm 2x1 rib/96% Merino/4% LYCRA®
Fit	Regular
Sizes	WXS-WXL

- Corespun fabric for enhanced durability
- LYCRA® content for stretch and mobility
- Coil center front zip
- Adjustable hood with drawcord
- Raglan sleeve construction with rib cuffs
- Kangaroo pocket
- Rib bottom hem
- Center back length: 68.6cm/27", size M
- Icebreaker pip logo



CRUSH PANTS

 - Corespun

Fabric	200gm terry corespun/88% Merino/9% Nylon/3% LYCRA®
Fit	Regular
Sizes	WXS-WXL

- Corespun fabric for enhanced durability
- LYCRA® content for stretch and mobility
- Elastic waist with external drawcord for adjustability
- Hand pockets
- Rib cuff bands
- Inseam: 76cm/30", size M
- Icebreaker pip label





WOMEN'S UNDERWEAR

Natural performance intimates, designed by nature as your primary next-to-skin layer, providing comfort, style and all-day protection.

NEXT TO SKIN - UNDERWEAR

SEAMLESS

ANATOMICA SEAMLESS SPORT BRA

NEW STYLE



Fabric	370gm tubular knit/35% Merino/ 35% TENCEL®/25% Nylon/5% LYCRA®
Fit	Slim
Sizes	WXS-WXL

- New seamless construction for ease of wear and mobility
- Cool-Lite™ fabric for faster wicking
- LYCRA® content for stretch and mobility
- Nylon content for durability
- Low-impact sports bra
- Removable bra cups
- Icebreaker knitted logo



ANATOMICA SEAMLESS LONG SPORT BRA

NEW STYLE



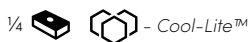
Fabric	370gm tubular knit/35% Merino/ 35% TENCEL®/25% Nylon/5% LYCRA®
Fit	Slim
Sizes	WXS-WXL

- New seamless construction for ease of wear and mobility
- Cool-Lite™ fabric for faster wicking
- LYCRA® content for stretch and mobility
- Nylon content for durability
- Low-impact long sports bra
- Removable bra cups
- Increased length for added coverage
- Icebreaker knitted logo



ANATOMICA SEAMLESS SPORT HIPKINI

NEW STYLE



Fabric	230gm tubular knit/40% Merino/ 40% TENCEL®/14% Nylon/6% LYCRA®
Fit	Slim
Sizes	WXS-WXL

- New seamless construction for ease of wear and mobility
- Cool-Lite™ fabric for faster wicking
- LYCRA® content for stretch and mobility
- Nylon content for durability
- Gusset for comfort and mobility
- Icebreaker knitted logo



SPRITE RACERBACK BRA

½   - Corespun

Fabric 150gm jersey corespun/
83% Merino/12% Nylon
5% LYCRA®

Fit Slim

Sizes WXS-WXL

- Corespun fabric for enhanced durability
- LYCRA® content for stretch and mobility
- Wide open racerback with low cut arm holes
- Cup insert compatible
- Support level: low to medium
- Flatlock seams and no side seam prevent underarm chafing
- Icebreaker branded elastic



10302001
BLACK



103020016
METRO HTHR
NEW



103020511
ORCHID
NEW



103020618
FIRE
NEW



103020013
STRIPE
GRITSTONE HTHR
NEW



SPRITE HOT PANTS

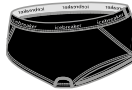
¼   - Corespun

Fabric 150gm jersey corespun/
83% Merino/12% Nylon/
5% LYCRA®

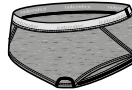
Fit Slim

Sizes WXS-WXL

- Corespun fabric for enhanced durability
- LYCRA® content for stretch and mobility
- Forward set side seams for comfort
- Icebreaker branded elastic waistband



103023001
BLACK



103023016
METRO HTHR
NEW



103023511
ORCHID
NEW





103023618
FIRE
NEW



103023038
STRIPE
GRITSTONE HTHR
NEW



SIREN BRA

1/2   - Corespun

Fabric	150gm jersey corespun/ 83% Merino/12% Nylon/ 5% LYCRA®
Fit	Slim
Sizes	WXS-WXL

- Corespun fabric for enhanced durability
- LYCRA® content for stretch and mobility
- Cup insert compatible
- Support level: low
- Adjustable straps
- No side seams prevent chafing
- Icebreaker tonal screen print logo



SIREN CAMI



1/4   - Corespun

Fabric	150gm jersey corespun/ 83% Merino/12% Nylon/ 5% LYCRA®
Fit	Slim
Sizes	WXS-WXL

- Corespun fabric for enhanced durability
- LYCRA® content for stretch and mobility
- Feminine scoop neck
- Adjustable strap construction
- Icebreaker tonal screen print logo



SIREN TANK

1/4   - Corespun

Fabric	150gm jersey corespun/ 83% Merino/12% Nylon/ 5% LYCRA®
Fit	Slim
Sizes	WXS-WXL

- Corespun fabric for enhanced durability
- LYCRA® content for stretch and mobility
- Feminine scoop neck
- Icebreaker tonal screen print logo



SIREN SS SWEETHEART

½   - Corespun

Fabric 150gm jersey corespun/
83% Merino/12% Nylon/
5% LYCRA®

Fit Slim

Sizes WXS-WXL

- Corespun fabric for enhanced durability
- LYCRA® content for stretch and mobility
- Soft V-neck
- Icebreaker tonal screen print logo



103062001
BLACK

103062101
SNOW

103062016
METRO HTHR
NEW

103062423
MIDNIGHT NAVY
NEW

103062511
ORCHID
NEW

SIREN LS SWEETHEART

  - Corespun

Fabric 150gm jersey corespun/
83% Merino/12% Nylon/
5% LYCRA®

Fit Slim

Sizes WXS-WXL

- Corespun fabric for enhanced durability
- LYCRA® content for stretch and mobility
- Soft V-neck
- Icebreaker tonal screen print logo



103194001
BLACK

103194016
METRO HTHR
NEW

SIREN THONG

¼   - Corespun

Fabric 150gm jersey corespun/
83% Merino/12% Nylon/
5% LYCRA®

Fit Slim

Sizes WXS-WXL

- Corespun fabric for enhanced durability
- LYCRA® content for stretch and mobility
- Low profile elastic waist and leg opening
- Forward set side seams for comfort



103027001
BLACK



103027201
FAWN HTHR



103027423
MIDNIGHT NAVY
NEW

SIREN BIKINI

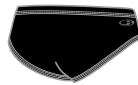
¼   - Corespun

Fabric 150gm jersey corespun/
83% Merino/12% Nylon/
5% LYCRA®

Fit Slim

Sizes WXS-WXL

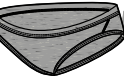
- Corespun fabric for enhanced durability
- LYCRA® content for stretch and mobility
- Low profile elastic waist and leg opening
- Side seams moved forward for additional comfort
- Icebreaker tonal screen print logo



103164001
BLACK



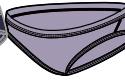
103164201
FAWN HTHR



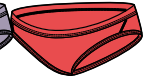
103164016
METRO HTHR
NEW



103164423
MIDNIGHT NAVY
NEW



103164511
ORCHID
NEW



103164618
FIRE
NEW

SIREN HIPKINI

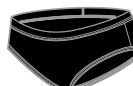
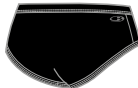
¼   - Corespun

Fabric 150gm jersey corespun/
83% Merino/12% Nylon/
5% LYCRA®

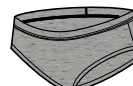
Fit Slim

Sizes WXS-WXL

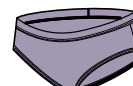
- Corespun fabric for enhanced durability
- LYCRA® content for stretch and mobility
- Low profile elastic waist and leg opening
- Low profile side seams for comfort
- Icebreaker tonal screen print logo



104704001
BLACK



104704016
METRO HTHR
NEW



104704511
ORCHID
NEW



104704013
STRIFE
GRITSTONE HTHR
NEW



104704423
STRIFE
MIDNIGHT NAVY
NEW





WOMEN'S BASE LAYER

Natural performance next-to-skin essentials,
designed by nature as your primary layer for
comfort, support and all-day protection.

NEXT TO SKIN - BASE LAYER

260 ZONE

260 g/m²

260 ZONE LS CREWE



Fabric Solid	260gm jersey/97% Merino/3% LYCRA®
Fabric Mesh	180gm eyelet/98% Merino/1% LYCRA®/1% Nylon
Fabric Insert	215gm waffle/100% Merino
Fit	Slim
Sizes	WXS-WXL

- LYCRA® content for stretch and mobility
- Zoned body mapping technology for optimal thermal regulation
- Strategically placed merino mesh for ventilation
- Flatlock seams prevent chafing
- Raglan sleeve construction for mobility
- Underarm gusset for comfort and mobility
- Dropped front and back hem for added coverage
- Center back length: 73cm/28¾", size M
- Icebreaker heat transfer logo



104477A01
JET HTHR/BLACK

260 ZONE LS HALF ZIP



Fabric Solid	260gm jersey/97% Merino/3% LYCRA®
Fabric Mesh	180gm eyelet/98% Merino/1% LYCRA®/1% Nylon
Fabric Insert	215gm waffle/100% Merino
Fit	Slim
Sizes	WXS-WXL

- LYCRA® content for stretch and mobility
- Zoned body mapping technology for optimal thermal regulation
- Zip neck collar for temperature regulation
- Strategically placed merino mesh for ventilation
- Flatlock seams prevent chafing
- Raglan sleeve construction for mobility
- Underarm gusset for comfort and mobility
- Dropped front and back hem for added coverage
- Center back length: 73cm/28¾", size M
- Icebreaker heat transfer logo



104394A01
JET HTHR/BLACK

260 ZONE LEGGINGS



Fabric Solid	260gm jersey/97% Merino/3% LYCRA®
Fabric Mesh	180gm eyelet/98% Merino/1% LYCRA®/1% Nylon
Fit	Slim
Sizes	WXS-WXL

- LYCRA® content for stretch and mobility
- Zoned body mapping technology for optimal thermal regulation
- Icebreaker branded brushed elastic waistband
- Strategically placed merino mesh for ventilation
- Flatlock seams prevent chafing
- Gusset for comfort and mobility
- Inseam: 72cm/28¼", size M



104396A01
JET HTHR/BLACK

NEXT TO SKIN - BASE LAYER

200 ZONE

200 g/m²

200 ZONE LS CREWE

 - BodyfitZONE™

Fabric Main	200gm jersey/96% Merino/4% LYCRA®
Fabric Mesh	180gm eyelet/98% Merino/1% LYCRA®/1% Nylon
Fit	Slim
Sizes	WXS-WXL

- LYCRA® content for stretch and mobility
- Strategically placed merino mesh for ventilation
- Flatlock seams prevent chafing
- Raglan sleeve construction for mobility
- Underarm gusset for comfort and mobility
- Dropped front and back hem for added coverage
- Center back length: 70.2cm/27¾", size M
- Icebreaker heat transfer logo



104426001
BLACK

200 ZONE LS HALF ZIP

 - BodyfitZONE™

Fabric Main	200gm jersey/96% Merino/ 4% LYCRA®
Fabric Mesh	180gm eyelet/98% Merino/ 1% LYCRA®/ 1% Nylon
Fit	Slim
Sizes	WXS-WXL

- LYCRA® content for stretch and mobility
- Zip neck collar for temperature regulation
- Strategically placed merino mesh for ventilation
- Flatlock seams prevent chafing
- Raglan sleeve construction for mobility
- Underarm gusset for comfort and mobility
- Dropped front and back hem for added coverage
- Center back length: 70.2cm/27¾", size M
- Icebreaker heat transfer logo



104425001
BLACK

200 ZONE SHORTS

½  - BodyfitZONE™


Fabric Main	200gm jersey/96% Merino/ 4% LYCRA®
Fabric Mesh	180gm eyelet/98% Merino/ 1% LYCRA®/1% Nylon
Fit	Slim
Sizes	WXS-WXL

- LYCRA® content for stretch and mobility
- Icebreaker branded brushed elastic waistband
- Strategically placed merino mesh for ventilation
- Flatlock seams prevent chafing
- Gusset for comfort and mobility
- Inseam: 25.6cm/10", size M



104424001
BLACK

200 ZONE LEGGINGS

½  - BodyfitZONE™

Fabric Main	200gm jersey/96% Merino/ 4% LYCRA®
Fabric Mesh	180gm eyelet/98% Merino/ 1% LYCRA®/1% Nylon
Fit	Slim
Sizes	WXS-WXL

- LYCRA® content for stretch and mobility
- Icebreaker branded brushed elastic waistband
- Strategically placed merino mesh for ventilation
- Flatlock seams prevent chafing
- Gusset for comfort and mobility
- Inseam: 72cm/28¼", size M



104427001
BLACK

NEXT TO SKIN - BASE LAYER

150 ZONE

150 g/m²

150 ZONE SS CREWE

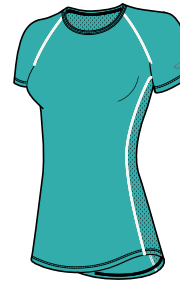
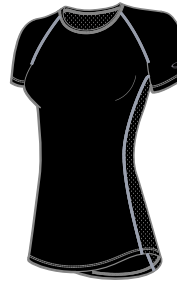
½  - BodyfitZONE™  - Corespun

Fabric Main	150gm jersey corespun/83% Merino/12% Nylon/5% LYCRA®
Fabric Mesh	120gm eyelet corespun/84% Merino/15% Nylon/1% LYCRA®
Fit	Slim
Sizes	WXS-WXL

- Corespun fabric for enhanced durability
- LYCRA® content for stretch and mobility
- Soft open neck
- Strategically placed merino mesh for ventilation
- Flatlock seams prevent chafing
- Raglan sleeve construction for mobility
- Underarm gusset for comfort and mobility
- Dropped front and back hem for added coverage
- Center back length: 72.7cm/38½", size M
- Icebreaker heat transfer logo



104330001
BLACK



104330435
LAGOON
NEW

150 ZONE LS CREWE

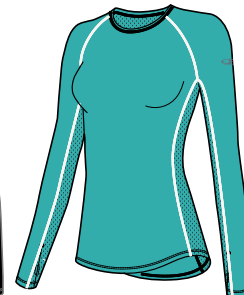
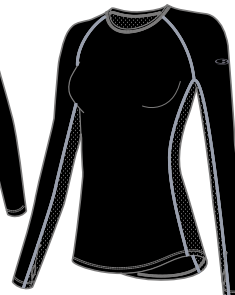
  - BodyfitZONE™  - Corespun

Fabric Main	150gm jersey corespun/83% Merino/12% Nylon/5% LYCRA®
Fabric Mesh	120gm eyelet corespun/84% Merino/15% Nylon/1% LYCRA®
Fit	Slim
Sizes	WXS-WXL

- Corespun fabric for enhanced durability
- LYCRA® content for stretch and mobility
- Soft open neck
- Strategically placed merino mesh for ventilation
- Flatlock seams prevent chafing
- Raglan sleeve construction for mobility
- Underarm gusset for comfort and mobility
- Dropped front and back hem for added coverage
- Center back length: 72.7cm/38½", size M
- Icebreaker heat transfer logo



104331001
BLACK



104331435
LAGOON
NEW

150 ZONE LS HALF ZIP

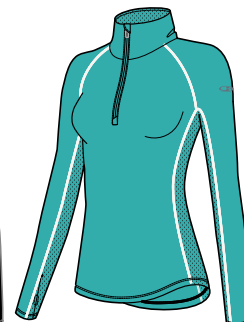
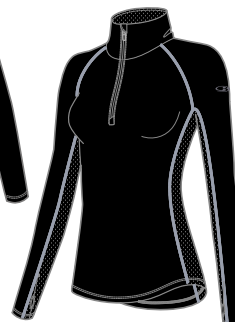
  - BodyfitZONE™  - Corespun

Fabric Main	150gm jersey corespun/83% Merino/12% Nylon/5% LYCRA®
Fabric Mesh	120gm eyelet corespun/84% Merino/15% Nylon/1% LYCRA®
Fit	Slim
Sizes	WXS-WXL

- Corespun fabric for enhanced durability
- LYCRA® content for stretch and mobility
- Zip neck collar for temperature regulation
- Strategically placed merino mesh for ventilation
- Flatlock seams prevent chafing
- Raglan sleeve construction for mobility
- Underarm gusset for comfort and mobility
- Dropped front and back hem for added coverage
- Center back length: 72.7cm/38½", size M
- Icebreaker heat transfer logo



104332001
BLACK



104332435
LAGOON
NEW

NEXT TO SKIN - BASE LAYER

150 ZONE

150 g/m²

150 ZONE LEGLESS

½  - BodyfitZONE™  - Corespun

Fabric Main	150gm jersey corespun/83% Merino/ 12% Nylon/5% LYCRA®
Fabric Mesh	120gm eyelet corespun/84% Merino/ 15% Nylon/1% LYCRA®
Fit	Slim
Sizes	WXS-WXL

- Corespun fabric for enhanced durability
- LYCRA® content for stretch and mobility
- Icebreaker branded elastic waistband
- Strategically placed merino mesh for ventilation
- Flatlock seams prevent chafing
- Gusset for comfort and mobility
- Inseam: 54cm/21¼", size M



104333001
BLACK

150 ZONE LEGGINGS

½  - BodyfitZONE™  - Corespun

Fabric Main	150gm jersey corespun/83% Merino/ 12% Nylon/5% LYCRA®
Fabric Mesh	120gm eyelet corespun/84% Merino/ 15% Nylon/1% LYCRA®
Fit	Slim
Sizes	WXS-WXL

- Corespun fabric for enhanced durability
- LYCRA® content for stretch and mobility
- Icebreaker branded elastic waistband
- Strategically placed merino mesh for ventilation
- Flatlock seams prevent chafing
- Gusset for comfort and mobility
- Inseam: 74.6cm/29¼", size M



104334001
BLACK

260 TECH LS CREWE



Fabric	260gm jersey/100% Merino
Fit	Slim
Sizes	WXS-WXL

- Offset shoulder seams prevent pack rub
- Flatlock seams prevent chafing
- Forward side seams for comfort
- Underarm gusset for comfort and mobility
- Drop tail hem for added coverage
- Center back length: 69cm/27¼", size M
- Icebreaker tonal embroidered logo



104387001
BLACK

260 TECH LS HALF ZIP



Fabric	260gm jersey/100% Merino
Fit	Slim
Sizes	WXS-WXL

- Zip neck collar for temperature regulation
- Offset shoulder seams prevent pack rub
- Flatlock seams prevent chafing
- Forward side seams for comfort
- Underarm gusset for comfort and mobility
- Drop tail hem for added coverage
- Center back length: 69cm/27¼", size M
- Icebreaker tonal embroidered logo



104390001
BLACK

260 TECH LEGGINGS



Fabric	260gm jersey/100% Merino
Fit	Slim
Sizes	WXS-WXL

- Icebreaker branded brushed elastic waistband
- Flatlock seams prevent chafing
- Gusset for comfort and mobility
- Inseam: 74.6cm/29¼", size M



104392001
BLACK

NEXT TO SKIN - BASE LAYER

200 BODYFIT

200 g/m²

200 OASIS LS CREWE



Fabric	200gm jersey/100% Merino
Fit	Slim
Sizes	WXS-WXL

- Offset shoulder seams prevent pack rub
- Flatlock seams prevent chafing
- Set-in sleeve construction with raglan back
- Underarm gusset for comfort and mobility
- Drop tail hem for added coverage
- Center back length: 69cm/27¼", size M
- Icebreaker tonal embroidered logo



104375001
BLACK

104375013
GRITSTONE HTHR

104375423
MIDNIGHT NAVY

104375618
FIRE
NEW

200 OASIS LS SCOOP



Fabric	200gm jersey/100% Merino
Fit	Slim
Sizes	WXS-WXL

- Feminine scoop neck
- Offset shoulder seams prevent pack rub
- Flatlock seams prevent chafing
- Set-in sleeve construction with raglan back
- Underarm gusset for comfort and mobility
- Drop tail hem for added coverage
- Center back length: 69cm/27¼", size M
- Icebreaker tonal embroidered logo



104378001
BLACK

200 OASIS LS HALF ZIP



Fabric	200gm jersey/100% Merino
Fit	Slim
Sizes	WXS-WXL

- Zip neck collar for temperature regulation
- Offset shoulder seams prevent pack rub
- Flatlock seams prevent chafing
- Set-in sleeve construction with raglan back
- Underarm gusset for comfort and mobility
- Drop tail hem for added coverage
- Center back length: 69cm/27¼", size M
- Icebreaker tonal embroidered logo



104380001
BLACK

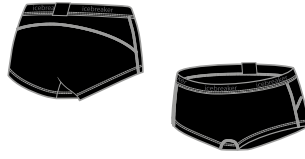
104380618
FIRE
NEW

200 OASIS BOY SHORTS



Fabric	200gm jersey/100% Merino
Fit	Slim
Sizes	WXS-WXL

- Icebreaker branded brushed elastic waistband
- No side seams for comfort
- Flatlock seams prevent chafing



104467001
BLACK

200 OASIS LEGLESS



Fabric	200gm jersey/100% Merino
Fit	Slim
Sizes	WXS-WXL

- Icebreaker branded brushed elastic waistband
- Flatlock seams prevent chafing
- Gusset for comfort and mobility
- Inseam: 49.9cm/16¾", size M



104382001
BLACK

200 OASIS LEGGINGS



Fabric	200gm jersey/100% Merino
Fit	Slim
Sizes	WXS-WXL

- Icebreaker branded brushed elastic waistband
- Flatlock seams prevent chafing
- Gusset for comfort and mobility
- Inseam: 74.6cm/29¼", size M



104383001
BLACK

104383013
GRITSTONE HTHR

NEXT TO SKIN - BASE LAYER

175 BODYFIT

175 g/m²

175 EVERYDAY CAMI

½

Fabric	175gm rib/100% Merino
Fit	Slim
Sizes	WXS-WXL

- Rib fabric provides stretch and comfort
- Feminine scoop neck
- Adjustable strap construction
- Center back length: 63cm/24¾", size M
- Icebreaker tonal embroidered logo



104469001
BLACK

175 EVERYDAY SS CREWE

½

Fabric	175gm rib/100% Merino
Fit	Slim
Sizes	WXS-WXL

- Rib fabric provides stretch and comfort
- Center back length: 66.5cm/26¼", size M
- Icebreaker tonal embroidered logo



104470001
BLACK

175 EVERYDAY LS CREWE

Fabric	175gm rib/100% Merino
Fit	Slim
Sizes	WXS-WXL

- Rib fabric provides stretch and comfort
- Center back length: 66.5cm/26¼", size M
- Icebreaker tonal embroidered logo



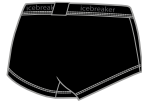
104471001
BLACK

175 EVERYDAY BOY SHORTS

½

Fabric	175gm rib/100% Merino
Fit	Slim
Sizes	WXS-WXL

- Rib fabric provides stretch and comfort
- Icebreaker branded brushed elastic waistband



104474001
BLACK

175 EVERYDAY LEGLESS

½

Fabric	175gm rib/100% Merino
Fit	Slim
Sizes	WXS-WXL

- Rib fabric provides stretch and comfort
- Icebreaker branded brushed elastic waistband
- Inseam: 51.8cm/20½", size M



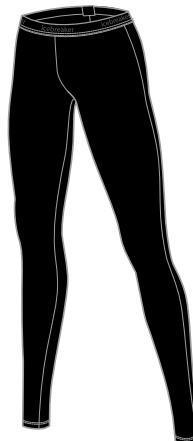
104475001
BLACK

175 EVERYDAY LEGGINGS

½

Fabric	175gm rib/100% Merino
Fit	Slim
Sizes	WXS-WXL

- Rib fabric provides stretch and comfort
- Icebreaker branded brushed elastic waistband
- Inseam: 72.8cm/28¾", size M



104476001
BLACK



MEN'S ADVENTURE

EXPLORE, NATURALLY

Modern, versatile performance wear for your adventures outdoors and in life. Designed for durability and ease of movement, in soft and breathable natural fibers.

ICEBREAKER ADVENTURE

FIRST LAYER AND MID LAYER

NATURE DYE GALEN SS CREWE

NEW STYLE

 - Corespun

Fabric	150gm jersey corespun/87% Merino/ 13% Nylon
Fit	Regular
Sizes	S-XXL

- Naturally dyed using an 80% reduction in water usage compared to traditional dyeing methods
- Corespun fabric for enhanced durability
- Offset shoulder seams prevent pack rub
- Forward set side seams for comfort
- Drop tail hem for added coverage
- Center back length: 75.2cm/29½", size L
- Icebreaker pip label



NATURE DYE GALEN LS CREWE

NEW STYLE

 - Corespun

Fabric	150gm jersey corespun/87% Merino/ 13% Nylon
Fit	Regular
Sizes	S-XXL

- Naturally dyed using an 80% reduction in water usage compared to traditional dyeing methods
- Corespun fabric for enhanced durability
- Offset shoulder seams prevent pack rub
- Forward set side seams for comfort
- Dropped relaxed armhole
- Drop tail hem for added coverage
- Center back length: 75cm/29½", size L
- Icebreaker pip label



SAIGE LS RUGBY

NEW STYLE



Fabric	260gm jersey/97% Merino/ 3% LYCRA®
Fit	Slim
Sizes	S-XXL

- LYCRA® content for stretch and mobility
- Polo neckline with 6 snap placket
- Snap neck collar for temperature regulation
- Offset shoulder seams prevent pack rub
- Forward set side seams for comfort
- Drop tail hem for added coverage
- Center back length: 77cm/30¼", size L
- Icebreaker heat transfer logo



ICEBREAKER ADVENTURE

OUTER LAYER

TROPOS VEST

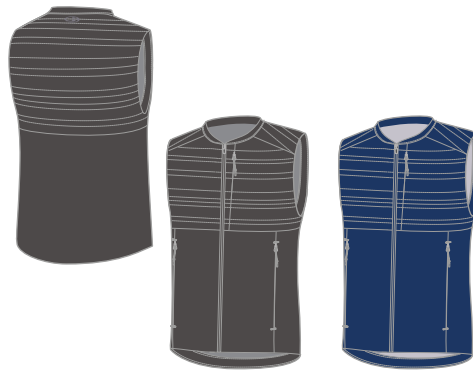
▼ WIND RESISTANT 💧 WATER REPELLENT

NEW STYLE

 - MerinoLOFT™

Fabric Shell	65gm woven/52% Recycled Nylon/48% Nylon/PFC-free DWR finish
Fabric Insulation	100gm MerinoLOFT™
Fabric Lining	44gm woven/100% Recycled Nylon
Fit	Regular
Sizes	S-XXL

- Recycled nylon content for durability
- Reverse coil center front zip with storm flap
- Zippered hand pockets
- Zippered chest pocket
- Packable into right hand pocket
- Center back length: 74.3cm/29¼", size L
- Icebreaker screen print logo



104961003
MONSOON
NEW
L

104961427
ESTATE BLUE
NEW
L

TROPOS JACKET

▼ WIND RESISTANT 💧 WATER REPELLENT

NEW STYLE

 - MerinoLOFT™

Fabric Shell	65gm woven/52% Recycled Nylon/48% Nylon/PFC-free DWR finish
Fabric Insulation	100gm MerinoLOFT™
Fabric Lining	44gm woven/100% Recycled Nylon
Fit	Regular
Sizes	S-XXL

- Recycled nylon content for durability
- Reverse coil center front zip with storm flap
- Zippered hand pockets
- Zippered chest pocket
- Packable into right hand pocket
- Center back length: 76.5cm/30", size L
- Icebreaker screen print logo



104960003
MONSOON
NEW
L

104960427
ESTATE BLUE
NEW
L

104960212
BRITISH TAN
NEW
L

TROPOS HOODED WINDBREAKER

▼ WIND RESISTANT 💧 WATER REPELLENT

NEW STYLE

 - Corespun

Fabric Shell	65gm woven/52% Recycled Nylon/48% Nylon/PFC-free DWR finish
Fabric Lining	150gm eyelet corespun/84% Merino/16% Nylon
Fit	Regular
Sizes	S-XXL

- Recycled nylon content for durability
- Merino eyelet lining for ventilation
- Corespun lining fabric for enhanced durability
- Adjustable hood with drawcord
- Reverse coil center front zip with storm flap
- Offset shoulder seams prevent pack rub
- Zippered hand pockets
- Zippered chest pocket
- Adjustable hem with drawcord
- Center back length: 77.8cm/30¾", size L
- Icebreaker screen print logo



104962003
MONSOON
NEW
L

104962805
SUN
NEW
L

ICEBREAKER ADVENTURE - SEASONAL

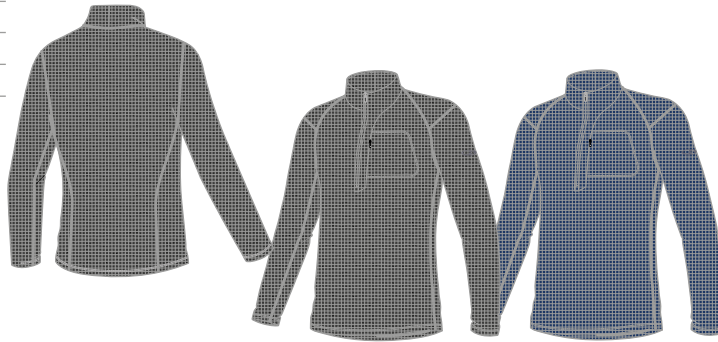
MID LAYER

SPRING RIDGE LS HALF ZIP

NEW STYLE

Fabric	215gm waffle/100% Merino
Fit	Slim
Sizes	S-XXL

- Zip neck collar for temperature regulation
- Offset shoulder seams prevent pack rub
- Zippered chest pocket
- Center back length: 77.2cm/30½", size L
- Icebreaker heat transfer logo



105174002
JET HTHR
NEW

105174427
ESTATE BLUE
NEW

AWAY II LS ZIP

NEW STYLE



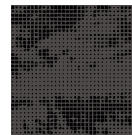
Fabric	250gm jacquard/100% Merino
Solid	
Fabric	250gm double jersey jacquard/100% Merino
Jacquard	
Fit	Slim
Sizes	S-XXL

- Reverse coil center front zip
- Offset shoulder seams prevent pack rub
- Raised zippered hand pockets
- Zippered chest pocket
- Center back length: 75.3cm/29¾", size L
- Icebreaker tonal embroidered logo

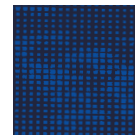


104957003
JACQUARD
MONSOON
NEW

104957B18
JACQUARD
ESTATE BLUE/LAPIS
NEW



JACQUARD



JACQUARD

ICEBREAKER ADVENTURE - SEASONAL

MID LAYER

DESCENDER LS ZIP

 - RealFLEECE®  - Corespun

Fabric Main	240gm textured brushed terry RealFLEECE®/84% Merino/9% Nylon/7% LYCRA®
Fabric Panels	200gm unbrushed terry corespun/88% Merino/9% Nylon/3% LYCRA®
Fit	Slim
Sizes	S-XXL

- Channeled fleece provides warmth and temperature regulation
- Corespun fabric for enhanced durability
- LYCRA® content for stretch and mobility
- Reverse coil center front zip
- Zipper chin guard and interior storm flap prevent chafing
- Flatlock seams prevent chafing
- Offset shoulder seams prevent pack rub
- Forward set side seams for comfort
- Zippered chest pocket
- Zippered hand pockets
- Drop tail hem for added coverage
- Center back length: 76.6cm/30¼", size L
- Icebreaker screen print logo



104853A01
JET HTHR/BLACK

104853C20
SUN/ MONSOON
NEW

DESCENDER LS ZIP HOOD

 - RealFLEECE®  - Corespun

Fabric Main	240gm textured brushed terry RealFLEECE®/84% Merino/9% Nylon/7% LYCRA®
Fabric Panels	200gm unbrushed terry corespun/88% Merino/9% Nylon/3% LYCRA®
Fit	Slim
Sizes	S-XXL

- Channeled fleece provides warmth and temperature regulation
- Corespun fabric for enhanced durability
- LYCRA® content for stretch and mobility
- Fitted hood for warmth and protection
- Reverse coil center front zip
- Zipper chin guard and interior storm flap prevent chafing
- Flatlock seams prevent chafing
- Offset shoulder seams prevent pack rub
- Forward set side seams for comfort
- Zippered chest pocket
- Zippered hand pockets
- Drop tail hem for added coverage
- Center back length: 76.6cm/30¼", size L
- Icebreaker screen print logo



104854A01
JET HTHR/BLACK

104854B19
LAPIS/ESTATE BLUE
NEW

104854C20
SUN/MONSOON
NEW

ICEBREAKER ADVENTURE - SEASONAL

BOTTOMS

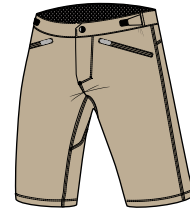
 WATER REPELLENT

PERSIST SHORTS

Fabric Main	138gm woven/60% Nylon/ 35% Merino/5% Spandex/ PFC-free DWR finish
Fabric Waistband	145gm eyelet corespun/ 51% Merino/34% TENCEL®/ 15% Nylon
Fit	Regular
Sizes	S-XXL



104116012
MONSOON



104116212
BRITISH TAN
NEW

- Nylon outer face for durability with Merino next to skin
- Spandex content for stretch and mobility
- Internal Cool-Lite™ eyelet lined waistband for faster wicking and comfort
- Corespun fabric in waistband for enhanced durability
- Waist tab adjustment on sides
- Adequate room for use with cycling shorts
- Front fly with zip closure
- Gusset for comfort and mobility
- Zippered hand pockets
- Inseam: 29.1cm/11½", size L
- Icebreaker pip label

PERSIST PANTS

 WATER REPELLENT

Fabric Main	138gm woven/60% Nylon/ 35% Merino/5% Spandex/ PFC-free DWR finish
Fabric Waistband	145gm eyelet corespun/ 51% Merino/34% TENCEL®/ 15% Nylon
Fit	Regular
Sizes	28-40



104115012
MONSOON



104115212
BRITISH TAN
NEW

- Nylon outer face for durability with Merino next to skin
- Spandex content for stretch and mobility
- Internal Cool-Lite™ eyelet lined waistband for faster wicking and comfort
- Corespun fabric in waistband for enhanced durability
- Front fly with zip closure
- Articulated knee seams for enhanced range of motion
- Gusset for comfort and mobility
- Hand pockets
- Zippered side stash pocket
- Inseam: 81.3cm/32", size 36
- Icebreaker pip label

ICEBREAKER ADVENTURE - MOUNTAINS

FIRST LAYER - ARTIST TEES



Fabric	150gm jersey corespun/ 87% Merino/13% Nylon
Fit	Regular
Sizes	S-XXL

- Ultimate adventure tee
- Corespun fabric for enhanced durability
- Center back length: 75cm/29½", size L
- Icebreaker pip label



TECH LITE SS CREWE
PEAK PATTERNS
Artist: Bill Carden-Horton



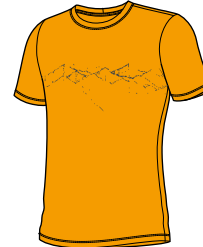
104940401
PEAK PATTERNS
MIDNIGHT NAVY
NEW



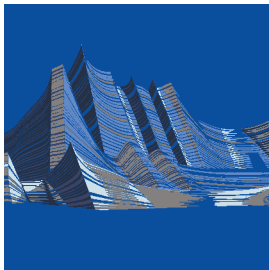
104940617
PEAK PATTERNS
ROCKET
NEW



104940434
PEAK PATTERNS
LAPIS
NEW



104940805
PEAK PATTERNS
SUN
NEW



TECH LITE SS CREWE
MONT BLANC MOIRÉ
Artist: Andrea Minini



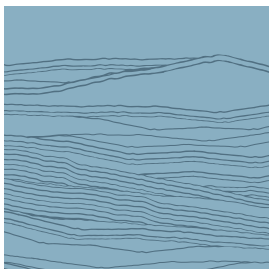
104949001
MONT BLANC MOIRÉ
BLACK
NEW



104949016
MONT BLANC MOIRÉ
METRO HTHR
NEW



104949434
MONT BLANC MOIRÉ
LAPIS
NEW



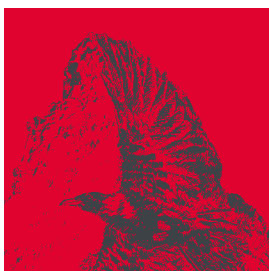
TECH LITE SS CREWE
1000 VISTAS
Artist: Zachary Snyder



104944016
1000 VISTAS
METRO HTHR
NEW



104944208
1000 VISTAS
DRIFTWOOD
NEW



TECH LITE SS CREWE
SPIRIT GUIDE
Artist: Scott Elser



104945001
SPIRIT GUIDE
BLACK
NEW



104945617
SPIRIT GUIDE
ROCKET
NEW

ICEBREAKER ADVENTURE - MOUNTAINS

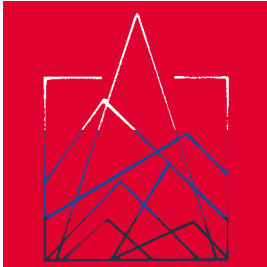
FIRST LAYER - ARTIST TEES

TECH LITE SS CREWE - ARTIST TEES (continued)

© - Corespun

Fabric	150gm jersey corespun/ 87% Merino/13% Nylon
Fit	Regular
Sizes	S-XXL

- Ultimate adventure tee
- Corespun fabric for enhanced durability
- Center back length: 75cm/29½", size L
- Icebreaker pip label



TECH LITE SS CREWE
7 PINNACLES

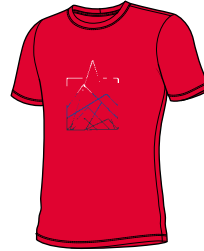
Artist: Damon Watters



104942001
7 PINNACLES
BLACK
NEW



104942427
7 PINNACLES
ESTATE BLUE
NEW



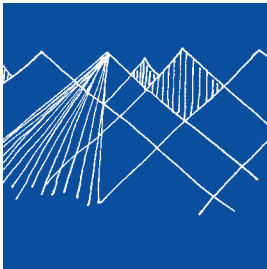
104942617
7 PINNACLES
ROCKET
NEW

TECH LITE LS CREWE - ARTIST TEES

© - Corespun

Fabric	150gm jersey corespun/ 87% Merino/13% Nylon
Fit	Regular
Sizes	S-XXL

- Ultimate adventure tee
- Corespun fabric for enhanced durability
- Center back length: 75cm/29½", size L
- Icebreaker pip label

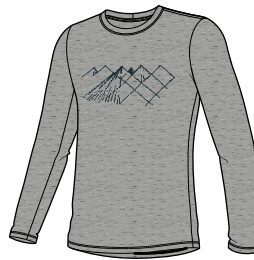


TECH LITE LS CREWE
GEO MOUNTAIN

Artist: Bill Carden-Horton



104955001
GEO MOUNTAIN
BLACK
NEW



104955016
GEO MOUNTAIN
METRO HTHR
NEW



104955434
GEO MOUNTAIN
LAPIS
NEW

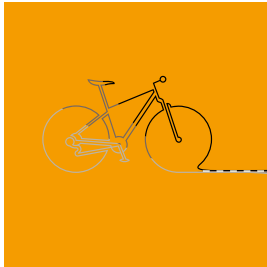
ICEBREAKER ADVENTURE - ACTIVITIES

FIRST LAYER - ARTIST TEES



Fabric	150gm jersey corespun/ 87% Merino/13% Nylon
Fit	Regular
Sizes	S-XXL

- Ultimate adventure tee
- Corespun fabric for enhanced durability
- Center back length: 75cm/29½", size L
- Icebreaker pip label



TECH LITE SS CREWE
CADENCE PATHS
Artist: Damon Watters



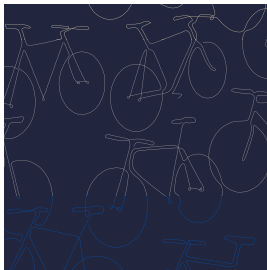
104948001
CADENCE PATHS
BLACK
NEW



104948805
CADENCE PATHS
SUN
NEW



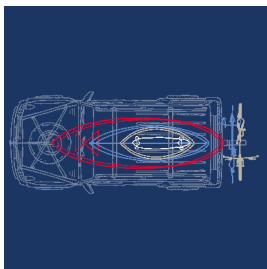
104948427
CADENCE PATHS
ESTATE BLUE
NEW



TECH LITE SS CREWE
FULL CYCLE
Artist: Zachary Snyder



104950401
FULL CYCLE
MIDNIGHT NAVY
NEW



TECH LITE SS CREWE
WIREFRAME WONDER
Artist: Damon Watters



104943001
WIREFRAME WONDER
BLACK
NEW



104943427
WIREFRAME WONDER
ESTATE BLUE
NEW



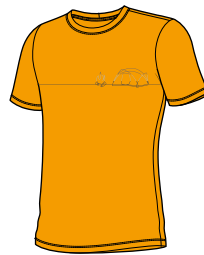
TECH LITE SS CREWE
SINGLE LINE CAMP
Artist: Zachary Snyder



104951001
SINGLE LINE CAMP
BLACK
NEW



104951208
SINGLE LINE CAMP
DRIFTWOOD
NEW



104951805
SINGLE LINE CAMP
SUN
NEW



104951434
SINGLE LINE CAMP
LAPIS
NEW

ICEBREAKER ADVENTURE - ANIMALS

FIRST LAYER - ARTIST TEES

 - Corespun

Fabric	150gm jersey corespun/ 87% Merino/13% Nylon
Fit	Regular
Sizes	S-XXL

- Ultimate adventure tee
- Corespun fabric for enhanced durability
- Center back length: 75cm/29½", size L
- Icebreaker pip label



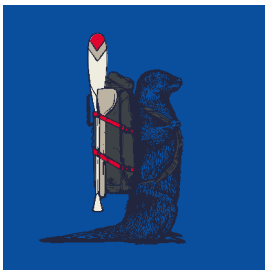
TECH LITE SS CREWE
WHITECAP WHALE
Artist: Damon Watters



104952208
WHITECAP WHALE
DRIFTWOOD
NEW

104952427
WHITECAP WHALE
ESTATE BLUE
NEW

104952617
WHITECAP WHALE
ROCKET
NEW

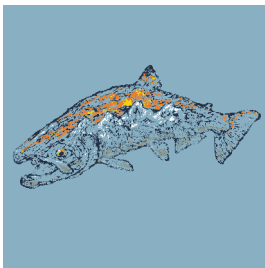


TECH LITE SS CREWE
OTTER PADDLE
Artist: Damon Watters

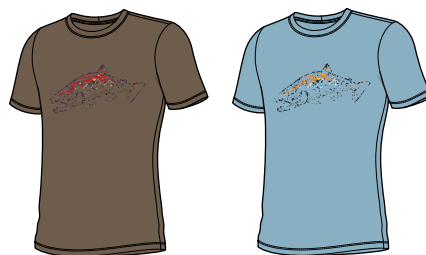


104954025
OTTER PADDLE
MINERAL
NEW

104954434
OTTER PADDLE
LAPIS
NEW

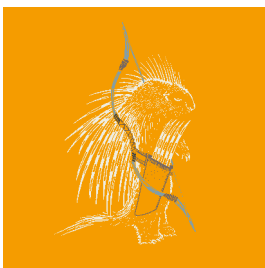


TECH LITE SS CREWE
TETONS SALMON
Artist: Scott Elser



104953208
TETONS SALMON
DRIFTWOOD
NEW

104953439
TETONS SALMON
WATERFALL
NEW



TECH LITE SS CREWE
QUILL
Artist: Damon Watters



105088001
QUILL
BLACK
NEW

105088805
QUILL
SUN
NEW

ICEBREAKER ADVENTURE - BRANDED

FIRST LAYER - ARTIST TEES

TECH LITE SS CREWE - ARTIST TEES



Fabric	150gm jersey corespun/ 87% Merino/13% Nylon
Fit	Regular
Sizes	S-XXL

- Ultimate adventure tee
- Corespun fabric for enhanced durability
- Center back length: 75cm/29½", size L
- Icebreaker pip label



TECH LITE SS CREWE
K2 CREST
Artist: Scott Elser



104941401
K2 CREST
MIDNIGHT NAVY
NEW



104941016
K2 CREST
METRO HTHR
NEW



TECH LITE SS CREWE
ICEBREAKER WORDMARK
Artist: Zachary Snyder



105175401
ICEBREAKER
WORDMARK
MIDNIGHT NAVY
NEW



105175016
ICEBREAKER
WORDMARK
METRO HTHR
NEW



105175617
ICEBREAKER
WORDMARK
ROCKET
NEW



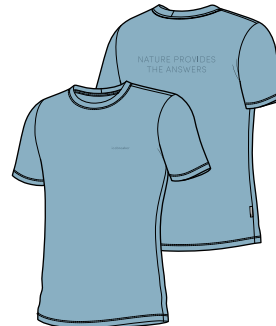
TECH LITE SS CREWE
ICEBREAKER NATURE ANSWERS
Artist: Zachary Snyder



105288001
ICEBREAKER
NATURE ANSWERS
BLACK
NEW



105288401
ICEBREAKER
NATURE ANSWERS
MIDNIGHT NAVY
NEW



105288439
ICEBREAKER
NATURE ANSWERS
WATERFALL
NEW

ICEBREAKER ADVENTURE - NATURAL ESSENTIALS

FIRST LAYER

TECH LITE SS CREWE

 - Corespun

Fabric 150gm jersey corespun/
87% Merino/13% Nylon

Fit Regular

Sizes S-XXL

- Corespun fabric for enhanced durability
- Center back length: 75cm/29½", size L
- Icebreaker pip label

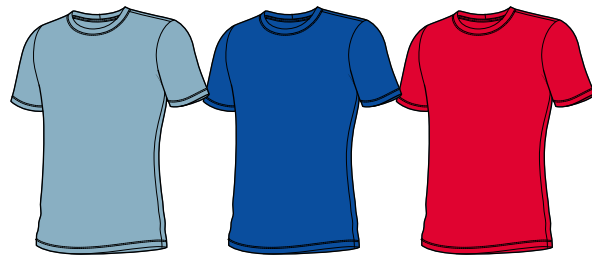


103860001
BLACK

103860423
MIDNIGHT
NAVY

103860013
GRITSTONE HTHR

103860805
SUN
NEW



103860439
WATERFALL
NEW

103860434
LAPIS
NEW

103860617
ROCKET
NEW

SPHERE SS CREWE

 - Cool-Lite™  - Corespun

Fabric 130gm jersey corespun/
52% Merino/35% TENCEL®/
13% Nylon

Fit Regular

Sizes S-XXL

- Cool-Lite™ fabric for comfort in warm to hot conditions
- Corespun fabric for enhanced durability
- Offset shoulder seams prevent pack rub
- Center back length: 75cm/29.5", size L
- Icebreaker pip label



104570030
BLACK HTHR

104570215
DRIFTWOOD HTHR
NEW

104570806
SUN HTHR
NEW

104570442
ESTATE BLUE HTHR
NEW

SPHERE LS CREWE

 - Cool-Lite™  - Corespun

Fabric 130gm jersey corespun/
52% Merino/35% TENCEL®/
13% Nylon

Fit Regular

Sizes S-XXL

- Cool-Lite™ fabric for comfort in warm to hot conditions
- Corespun fabric for enhanced durability
- Offset shoulder seams prevent pack rub
- Center back length: 75cm/29.5", size L
- Icebreaker pip label



104569030
BLACK HTHR

104569215
DRIFTWOOD HTHR
NEW

104569442
ESTATE BLUE HTHR
NEW

ICEBREAKER ADVENTURE - NATURAL ESSENTIALS

MID LAYER

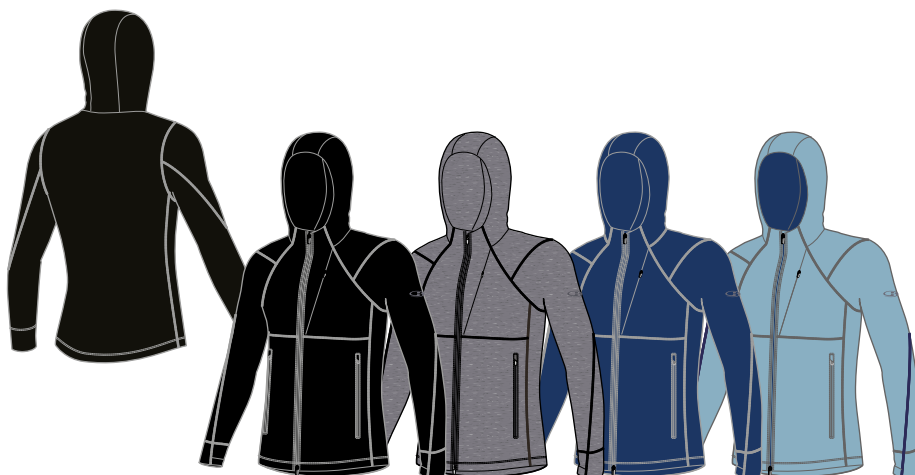
QUANTUM II LS ZIP HOOD

NEW STYLE



Fabric Main	250gm terry/98% Merino/ 2% LYCRA®
Fabric Hood lining	200gm jersey/100% Merino
Fit	Slim
Sizes	S-XXL

- LYCRA® content for stretch and mobility
- Fitted hood for warmth and protection
- Reverse coil center front 2-way zip with storm flap
- Flatlock seams prevent chafing
- Forward set side seams for comfort
- Zippered chest pocket
- Raised zippered hand pockets
- Center back length: 77.7cm/30½", size L
- Icebreaker heat transfer logos



104958001
BLACK
NEW

104958004
GRITSTONE HTHR
NEW

104958427
ESTATE BLUE
NEW

104958439
WATERFALL
NEW



MEN'S TRAINING

MOVE, NATURALLY

High-performance natural fibers that move, stretch and work with your body. Providing the ultimate comfort, breathability and odor-management for a training experience that is closer to nature.

ICEBREAKER TRAINING – SEAMLESS

FIRST LAYER

MOTION SEAMLESS SS CREWE

NEW STYLE



Fabric	155gm tubular knit/35% Merino/ 35% TENCEL®/18% Polyester/12% Nylon
Fit	Regular
Sizes	S-XL

- New seamless construction for mobility and to prevent chafing
- Cool-Lite™ fabric for faster wicking
- Nylon and polyester content for durability
- Seamless mesh panels for enhanced ventilation
- Flatlock seams prevent chafing
- Raglan sleeve construction for mobility
- Center back length: 73.6cm/29", size L
- Icebreaker reflective heat transfer logo



MOTION SEAMLESS LS CREWE

NEW STYLE



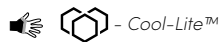
Fabric	155gm tubular knit/35% Merino/ 35% TENCEL®/18% Polyester/12% Nylon
Fit	Regular
Sizes	S-XL

- New seamless construction for mobility and to prevent chafing
- Cool-Lite™ fabric for faster wicking
- Nylon and polyester content for durability
- Seamless mesh panels for enhanced ventilation
- Flatlock seams prevent chafing
- Raglan sleeve construction for mobility
- Center back length: 73.6cm/29", size L
- Icebreaker reflective heat transfer logo



MOTION SEAMLESS LS HALF ZIP

NEW STYLE



Fabric	155gm tubular knit/35% Merino/ 35% TENCEL®/18% Polyester/12% Nylon
Fit	Regular
Sizes	S-XL

- New seamless construction for mobility and to prevent chafing
- Cool-Lite™ fabric for faster wicking
- Nylon and polyester content for durability
- Seamless mesh panels for enhanced ventilation
- Reflective zip for visibility in low light and temperature regulation
- Flatlock seams prevent chafing
- Raglan sleeve construction for mobility
- Center back length: 73.6cm/29", size L
- Icebreaker reflective heat transfer logo



ICEBREAKER TRAINING – SEAMLESS

BOTTOMS

MOTION SEAMLESS 3Q TIGHTS

NEW STYLE

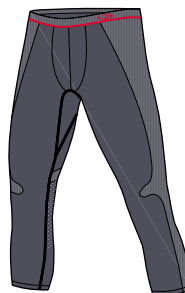


Fabric 370gm tubular knit/35% Merino/
35% TENCEL®/25% Nylon/5% LYCRA®

Fit Slim

Sizes S-XXL

- New seamless construction for ease of wear and mobility
- Cool-Lite™ fabric for faster wicking
- LYCRA® content for stretch and mobility
- Nylon content for durability
- Seamless mesh panels for enhanced ventilation
- Flatlock seams prevent chafing
- Reflective detail at back leg for visibility in low light
- Gusset for comfort and mobility
- Inseam: 47cm/18½", size L
- Icebreaker knitted logo



104978018
PANTHER
NEW



MOTION SEAMLESS TIGHTS

NEW STYLE

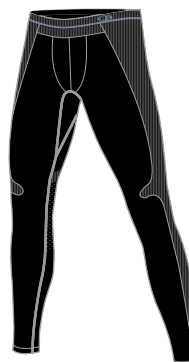
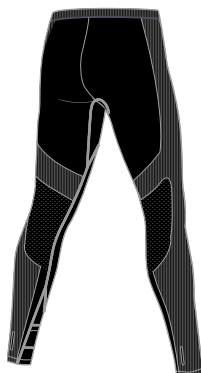


Fabric 370gm tubular knit/35% Merino/
35% TENCEL®/25% Nylon/5% LYCRA®

Fit Slim

Sizes S-XXL

- New seamless construction for ease of wear and mobility
- Cool-Lite™ fabric for faster wicking
- LYCRA® content for stretch and mobility
- Nylon content for durability
- Seamless mesh panels for enhanced ventilation
- Stash pocket at inner left leg for storage
- Reflective detail at back leg for visibility in low light
- Gusset for comfort and mobility
- Inseam: 65.5cm/25¾", size L
- Icebreaker knitted logo



104981001
BLACK
NEW



ICEBREAKER TRAINING - NATURAL RUNNING

FIRST LAYER

AMPLIFY TANK

 - Cool-Lite™  - Corespun

Fabric Main	130gm jersey corespun/ 52% Merino/35% TENCEL®/ 13% Nylon
Fabric Mesh	135gm eyelet corespun/ 51% Merino/35% TENCEL®/ 14% Nylon
Fit	Slim
Sizes	S-XXL

- Cool-Lite™ fabric for faster wicking and comfort in warm to hot conditions
- Corespun fabric for enhanced durability
- Offset shoulder seams for comfort
- Drop tail hem for added coverage
- Eyelet mesh back for full ventilation
- Center back length: 75.5cm/29¾", size L
- Icebreaker reflective heat transfer logo



104584434
LAPIS
NEW



104584018
PANTHER
NEW

AMPLIFY SS CREWE

 - Cool-Lite™  - Corespun

Fabric Main	130gm jersey corespun/ 52% Merino/35% TENCEL®/ 13% Nylon
Fabric Mesh	135gm eyelet corespun/ 51% Merino/35% TENCEL®/ 14% Nylon
Fit	Slim
Sizes	S-XXL

- Cool-Lite™ fabric for faster wicking and comfort in warm to hot conditions
- Corespun fabric for enhanced durability
- Eyelet mesh back for full ventilation
- Offset shoulder seams for comfort
- Drop tail hem for added coverage
- Center back length: 76.2cm/30", size L
- Icebreaker reflective heat transfer logo



104581033
MINERAL HTHR
NEW

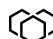



104581434
LAPIS
NEW



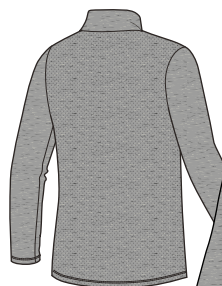
104581018
PANTHER
NEW

AMPLIFY LS HALF ZIP

 - Cool-Lite™  - Corespun

Fabric Main	130gm jersey corespun/ 52% Merino/35% TENCEL®/ 13% Nylon
Fabric Mesh	135gm eyelet corespun/ 51% Merino/35% TENCEL®/ 14% Nylon
Fit	Slim
Sizes	S-XXL

- Cool-Lite™ fabric for faster wicking and comfort in warm to hot conditions
- Corespun fabric for enhanced durability
- Eyelet mesh back for full ventilation
- Offset shoulder seams for comfort
- Reflective zip for visibility in low light and temperature regulation
- Drop tail hem for added coverage
- Center back length: 75.9cm/30", size L
- Icebreaker reflective heat transfer logo



104809033
MINERAL HTHR
NEW



104809434
LAPIS
NEW



104809018
PANTHER
NEW

ICEBREAKER TRAINING - NATURAL RUNNING

OUTER LAYER

RUSH VEST

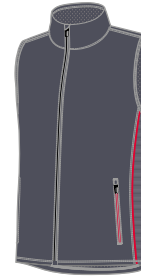
 - Cool-Lite™  - Corespun

Fabric Shell	55gm woven ripstop/100% Recycled Polyester/PFC-free DWR finish
Fabric Lining	145gm eyelet corespun/51% Merino/34% TENCEL®/15% Nylon
Fabric Side panels	155gm jersey corespun/50% Merino/33% TENCEL®/12% Nylon/5% Spandex
Fit	Regular
Sizes	S-XXL


- Recycled polyester content for faster wicking and drying
- Cool-Lite™ eyelet lining for faster wicking
- Corespun fabric for enhanced durability
- Spandex content for stretch and mobility
- Reflective center front zip for visibility in low light
- Zipper chin guard and interior storm flap prevent chafing
- Offset shoulder seams prevent pack rub
- Zippered hand pockets
- Packable into right hand pocket
- Drop tail hem for added coverage
- Adjustable hem with drawcord
- Reflective detail on lower back for visibility in low light
- Center back length: 78.6cm/31", size L
- Icebreaker reflective screenprint logo

 WIND RESISTANT  WATER REPELLENT

NEW STYLE



104986018
PANTHER
NEW


104986434
DYESCAPE
LAPIS
NEW




DYESCAPE

RUSH JACKET

 - Cool-Lite™  - Corespun

Fabric Shell	55gm woven ripstop/100% Recycled Polyester/PFC-free DWR finish
Fabric Lining	145gm eyelet corespun/51% Merino/34% TENCEL®/15% Nylon
Fabric Side panels/Back shoulder panels	155gm jersey corespun/50% Merino/33% TENCEL®/12% Nylon/5% Spandex
Fit	Regular
Sizes	S-XXL


- Recycled polyester content for faster wicking and drying
- Cool-Lite™ eyelet lining for faster wicking
- Corespun fabric for enhanced durability
- Spandex content for stretch and mobility
- Reflective center front zip for visibility in low light
- Zipper chin guard and interior storm flap prevent chafing
- Offset shoulder seams prevent pack rub
- Zippered hand pockets
- Packable into right hand pocket
- Drop tail hem for added coverage
- Adjustable hem with drawcord
- Reflective detail on lower back for visibility in low light
- Center back length: 80.6cm/31¾", size L
- Icebreaker reflective screenprint logo

 WIND RESISTANT  WATER REPELLENT

NEW STYLE



104987018
PANTHER
NEW


104987434
DYESCAPE
LAPIS
NEW




DYESCAPE

ICEBREAKER TRAINING - NATURAL RUNNING

BOTTOMS

IMPULSE RUNNING SHORTS

 - Cool-Lite™  - Corespun

Fabric Main	56gm woven/46% Recycled Nylon/ 44% Nylon/10% LYCRA®/PFC-free DWR finish
Fabric Lining	145gm eyelet corespun/51% Merino/ 34% TENCEL®/15% Nylon
Fit	Regular
Sizes	S-XXL

- Updated fabric
- Recycled nylon fabric for breathability and optimal comfort in all conditions
- Cool-Lite™ eyelet brief liner for faster wicking
- LYCRA® content for stretch and mobility
- Corespun fabric for enhanced durability
- Internal Cool-Lite™ eyelet lined waistband for faster wicking and comfort
- Waistband with internal drawcord for adjustability
- Gusset for comfort and mobility
- Zippered back stash pocket
- Power mesh back hip pockets
- Inseam: 12.7cm/5", size L
- Icebreaker reflective heat transfer logo

 WATER REPELLENT

UPDATED STYLE

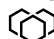



104586035
PANTHER
NEW

ICEBREAKER TRAINING - NATURAL TRAINING

MID LAYER

MOMENTUM LS CREWE

 - Cool-Lite™  - Corespun

Fabric 260gm terry/44% TENCEL®/
43% Merino/7% LYCRA®/
6% Nylon

Fit Regular

Sizes S-XXL

- Cool-Lite™ fabric for faster wicking and comfort in warm to hot conditions
- Corespun fabric for enhanced durability
- LYCRA® content for stretch and mobility
- Raglan sleeve construction for mobility
- Center back length: 73.2cm/28¾", size L
- Icebreaker tonal embroidered logo

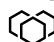



104812010
BLACK
NEW

104812212
BRITISH TAN
NEW

L

MOMENTUM HOODED PULLOVER

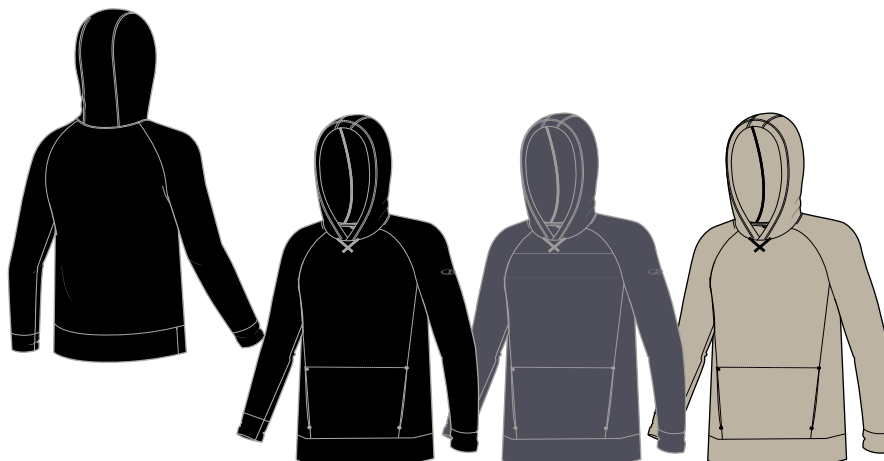
 - Cool-Lite™  - Corespun

Fabric 260gm terry/44% TENCEL®/
43% Merino/7% LYCRA®/
6% Nylon

Fit Regular

Sizes S-XXL

- Cool-Lite™ fabric for faster wicking and comfort in warm to hot conditions
- Corespun fabric for enhanced durability
- LYCRA® content for stretch and mobility
- Loose fitting hood
- Raglan sleeve construction for mobility
- Kangaroo pocket
- Center back length: 76.1cm/30", size L
- Icebreaker tonal embroidered logo



104850010
BLACK

104850018
PANTHER
NEW

104850212
BRITISH TAN
NEW

L

ICEBREAKER TRAINING - NATURAL TRAINING

BOTTOMS

IMPULSE TRAINING SHORTS

 - Cool-Lite™  - Corespun

Fabric Main	56gm woven/46% Recycled Nylon/44% Nylon/10% LYCRA®/ PFC-free DWR finish
Fabric Lining	145gm eyelet corespun/51% Merino/ 34% TENCEL®/15% Nylon
Fit	Regular
Sizes	S-XXL

- Updated fabric
- Recycled nylon fabric for breathability and optimal comfort in all conditions
- Cool-Lite™ eyelet long liner for faster wicking
- Corespun fabric for enhanced durability
- LYCRA® content for stretch and mobility
- Internal Cool-Lite™ eyelet lined waistband for faster wicking and comfort
- Waistband with internal drawcord for adjustability
- Gusset for comfort and mobility
- Zippered hand pockets
- Inseam: 19cm/7", size L
- Icebreaker reflective heat transfer logo



104587010
BLACK
NEW

 WATER REPELLENT

UPDATED STYLE



MEN'S LIFE

LIVE, NATURALLY

Easy-going lifestyle staples made for versatility and comfort. Your go-to pieces for whatever your day brings, with a focus on sustainability and natural innovations.

ICEBREAKER LIFE - NATURE DYE

FIRST LAYER AND MID LAYER

NEW STYLE

NATURE DYE DRAYDEN SS POCKET CREWE

 - Cool-Lite™  - Corespun

Fabric 130gm jersey corespun/52% Merino/
35% TENCEL®/13% Nylon

Fit Regular

Sizes S-XXL

- Naturally dyed using an 80% reduction in water usage compared to traditional dyeing methods
- Cool-Lite™ fabric for comfort in cool to hot conditions
- Corespun fabric for enhanced durability
- Center back length: 72.5cm/28½", size L
- Icebreaker pip logo



NATURE DYE DRAYDEN LS CREWE

NEW STYLE

 - Cool-Lite™  - Corespun

Fabric Main 175gm jersey corespun/61% Merino/
19% TENCEL®/14% Nylon/6% LYCRA®

Fabric Neck/
Cuffs/
Hem 190gm 1x1 rib/65% Merino/20% TENCEL®/
15% Nylon

Fit Relaxed

Sizes S-XXL

- Naturally dyed using an 80% reduction in water usage compared to traditional dyeing methods
- Cool-Lite™ fabric for comfort in cool to hot conditions
- Corespun fabric for enhanced durability
- LYCRA® content for stretch and mobility
- Ribbed neck, cuffs and hem
- Center back length: 73.2cm/28¾", size L
- Icebreaker pip label



NATURE DYE HELLIERS LS CREWE

NEW STYLE

 - RealFLEECE®  - Corespun

Fabric Main 210gm brushed terry RealFLEECE®/
88% Merino/9% Nylon/3% LYCRA®

Fabric Neck/
Cuffs/
Hem 370gm 2x1 rib/98% Merino/
2% LYCRA®

Fit Relaxed

Sizes S-XXL

- Naturally dyed using an 80% reduction in water usage compared to traditional dyeing methods
- Corespun fabric for enhanced durability
- LYCRA® content for stretch and mobility
- Raglan sleeve construction with rib cuffs
- Rib bottom hem
- Center back length: 73.5cm/28", size L
- Icebreaker pip logo



ICEBREAKER LIFE - SEASONAL

FIRST LAYER

ELOWEN SS CREWE

NEW STYLE

 - Cool-Lite™  - Corespun

Fabric	165gm jersey corespun/65% Merino/ 22% TENCEL®/8% Nylon/5% LYCRA®
Fit	Regular
Sizes	S-XXL

- Alternating 100% merino and Cool-Lite™ stripe garments are dyed in a one-step process, reducing material and water waste
- 100% Merino dyes as a solid color while Cool-Lite™ dyes as heathered
- Cool-Lite™ fabric for comfort in warm to hot conditions
- LYCRA® content for stretch and mobility
- Offset shoulder seams for comfort
- Forward set side seams for comfort
- Center back length: 74.8cm/29½", size L
- Icebreaker pip label



104968003
STRIPE
MONSOON
NEW

104968439
STRIPE
WATERFALL
NEW

104968308
STRIPE
CYPRESS
NEW



SOLACE SS POLO

 - Cool-Lite™  - Corespun

Fabric	130gm jersey corespun/52% Merino/ 35% TENCEL®/13% Nylon
Fit	Slim
Sizes	S-XXL

- Cool-Lite™ fabric for comfort in warm to hot conditions
- Corespun fabric for enhanced durability
- Polo neckline with 3 button placket
- Center back button for collar stability
- Set-in sleeve construction
- Drop tail hem for added coverage
- Center back length: 77cm/30¼", size L
- Icebreaker pip label



104594030
BLACK HTHR

104594440
MIDNIGHT NAVY
HTHR

ICEBREAKER LIFE - SEASONAL

FIRST LAYER

COMPASS SS SHIRT



Fabric Solid/Plaid	149gm woven/47% Merino/ 31% TENCEL®/22 Polyester
Fabric Dobby	149gm woven/45% Merino/ 33% TENCEL®/21% Polyester/ 1% Organic Cotton
Fit	Regular
Sizes	S-XXL

- Cool-Lite™ fabric for comfort in warm to hot conditions
- Polyester content for faster wicking and drying
- Offset shoulder seams prevent pack rub
- Pleat at center back for drape and mobility
- Center front placket with button closure
- Chest pocket
- Side split for ease of movement
- Center back length: 76.8cm/30¼", size L
- Icebreaker pip label

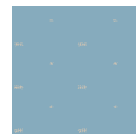
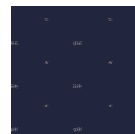


103611003
MONSOON

103611423
DOBBY
MIDNIGHT NAVY
NEW

103611439
DOBBY
WATERFALL
NEW

103611208
DOBBY
DRIFTWOOD
NEW



103611C16
PLAID
CYPRESS/
DRIFTWOOD
NEW



103611B14
PLAID
MIDNIGHT NAVY/
MONSOON
NEW



COMPASS FLANNEL LS SHIRT



Fabric	141gm woven flannel/ 43% Merino/34% TENCEL®/ 23% Recycled Polyester
Fit	Slim
Sizes	S-XXL

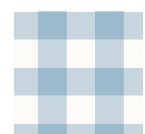
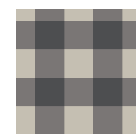
- Cool-Lite™ fabric for comfort in warm to hot conditions
- LYCRA® content for stretch and mobility
- Polyester content for faster wicking and drying
- Center front placket with button closure
- Chest pocket
- Cuffs with button closure
- Center back length: 77.6cm/10½", size L
- Icebreaker pip label



104141013
GRITSTONE HTHR
NEW

104141A27
GINGHAM
MONSOON/
BRITISH TAN
NEW

104141B22
GINGHAM
WATERFALL/
ENAMEL
NEW



ICEBREAKER LIFE - SEASONAL

MID LAYER AND BOTTOMS

NOVA SWEATER SWEATSHIRT

NEW STYLE



Fabric 12gg knit/50% Merino/
50% TENCEL®

Fit Relaxed

Sizes S-XXL

- Cool-Lite™ yarn for comfort in cool to hot conditions
- Fully fashioned lifestyle sweater
- Rib neck, cuffs, and bottom hem
- Drop tail hem for added coverage
- Machine washable
- Center back length: 73cm/28¾", size L



104971001
BLACK
NEW



104971004
GRITSTONE HTHR
NEW



CONNECTION COMMUTER SHORTS

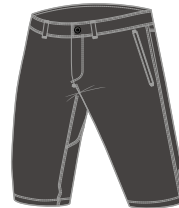
WATER REPELLENT

Fabric 138gm woven/60% Nylon 35% Merino/
5% Spandex/PFC-free DWR finish

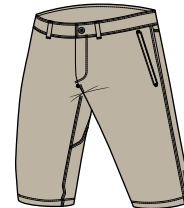
Fit Regular

Sizes 28-40

- Nylon outer face for durability with Merino next to skin
- Spandex content for stretch and mobility
- High cut back for fit and coverage
- Front fly with snap closure
- Gusset for comfort and mobility
- Hand pockets
- Zippered back pocket
- Reflective screen print detail on bottom of legs for visibility in low light
- Inseam: 26.6cm/10½", size 34
- Icebreaker pip label



104142012
MONSOON



104142212
BRITISH TAN
NEW



BRIAR PANTS

WATER REPELLENT

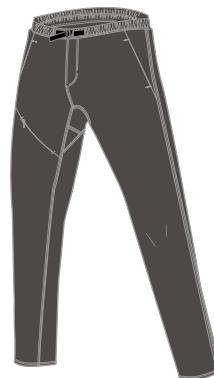
NEW STYLE

Fabric 138gm woven/60% Nylon/35% Merino/
5% Spandex/PFC-free DWR finish

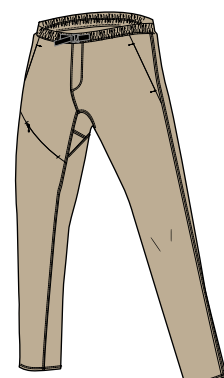
Fit Relaxed

Sizes S-XXL

- Nylon outer face for durability with Merino next to skin
- Spandex content for stretch and mobility
- Elastic waistband with integrated external belt system for adjustability
- Tapered leg opening
- Gusset for comfort and mobility
- Hand pockets
- Zippered front thigh stash pocket
- Zippered back pocket
- Inseam: 81.5cm/32", size L
- Icebreaker pip label



104967003
MONSOON
NEW



104967212
BRITISH TAN
NEW



ICEBREAKER LIFE - SEASONAL

OUTERWEAR

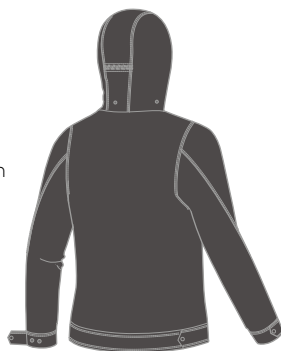
BRIAR HOODED JACKET

WATER REPELLENT

NEW STYLE

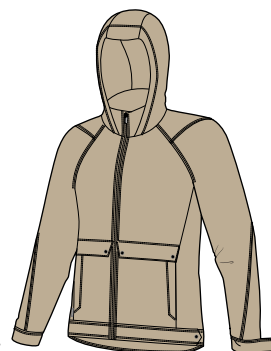
Fabric	138gm woven/60% Nylon/35% Merino/ 5% Spandex/PFC-free DWR finish
Fit	Relaxed
Sizes	S-XXL

- Nylon outer face for durability with Merino next to skin
- Spandex content for stretch and mobility
- Adjustable hood with drawcord
- Hood stows into collar with snap closures
- Metaluxe® vislon center front zip
- Offset shoulder seams for comfort
- Forward set side seams
- Cuffs with adjustable snap closure
- Vertical zippered hand pockets
- Horizontal hand pockets with flap and snap closure
- Adjustable hem with snap closures
- Center back length: 76.6cm/20 1/4", Size L
- Icebreaker pip label



104974003
MONSOON
NEW

L



104974212
BRITISH TAN
NEW

L

ICEBREAKER LIFE - NATURAL ESSENTIALS

FIRST LAYER

RAVYN SS V

NEW STYLE

 - Corespun

Fabric	150gm jersey corespun/ 87% Merino/13% Nylon
Fit	Regular
Sizes	S-XXL

- Corespun fabric for enhanced durability
- Center back length: 72.2cm/28½", size L
- Icebreaker pip label



105050001
BLACK
NEW

105050002
JET HTHR
NEW

105050401
MIDNIGHT NAVY
NEW

105050439
WATERFALL
NEW

RAVYN SS POCKET TEE

NEW STYLE

 - Corespun

Fabric	150gm jersey corespun/ 87% Merino/13% Nylon
Fit	Regular
Sizes	S-XXL

- Corespun fabric for enhanced durability
- Center back length: 72.5cm/28½", size L
- Icebreaker pip label



104964001
BLACK
NEW

104964002
JET HTHR
NEW

104964401
MIDNIGHT NAVY
NEW

104964308
CYPRESS
NEW

RAVYN LS POCKET CREWE

NEW STYLE

 - Corespun

Fabric	150gm jersey corespun/ 87% Merino/13% Nylon
Fit	Regular
Sizes	S-XXL

- Corespun fabric for enhanced durability
- Center back length: 72.5cm/28½", size L
- Icebreaker pip label



104966001
BLACK
NEW

104966002
JET HTHR
NEW

104966401
MIDNIGHT NAVY
NEW

104966308
CYPRESS
NEW

TECH LITE SS POLO

 - Corespun

Fabric	150gm jersey corespun/ 87% Merino/13% Nylon
Fit	Regular
Sizes	S-XXL

- Corespun fabric for enhanced durability
- Polo neckline with 3 button placket
- Flat knit rib collar
- Pleat at center back for drape and mobility
- Side split for ease of movement
- Center back length: 74cm/29", size L
- Icebreaker pip label



104124001
BLACK

104124011
JET HTHR
NEW

104124423
MIDNIGHT NAVY

104124439
WATERFALL
NEW

ICEBREAKER LIFE - NATURAL ESSENTIALS

MID LAYER AND BOTTOMS

LYDMAR LS ZIP

❄️ - RealFLEECE® 🌀 - Corespun

Fabric	200gm brushed terry RealFLEECE®/87% Merino/ 10% Nylon/3% LYCRA®
Fabric Cuff/ Hem	375gm 2x1 rib/96% Merino/ 4% LYCRA®
Fit	Relaxed
Sizes	S-XXL

- Corespun fabric for enhanced durability
- LYCRA® content for stretch and mobility
- Reverse coil center front zip
- Raglan sleeve construction with rib cuffs
- Zippered hand pockets
- Rib bottom hem
- Center back length: 74.2cm/29¼", size L
- Icebreaker pip label



104763001
BLACK

104763401
MIDNIGHT NAVY

HELLIERS LS ZIP HOOD

❄️ - RealFLEECE® 🌀 - Corespun

Fabric Main	200gm brushed terry RealFLEECE®/87% Merino/ 10% Nylon/3% LYCRA®
Fabric Cuff/ Hem	375gm 2x1 rib/96% Merino/ 4% LYCRA®
Fit	Regular
Sizes	S-XXL

- Corespun fabric for enhanced durability
- LYCRA® content for stretch and mobility
- Adjustable hood with drawcord
- Coil center front zip
- Raglan sleeve construction with rib cuffs
- Kangaroo pockets
- Rib bottom hem
- Center back length: 72.6 cm/28½", size L
- Icebreaker pip logo



104893001
BLACK

104893013
GRITSTONE HTHR
NEW

SHIFTER PANTS

🌀 - Corespun

Fabric Main	200gm terry corespun/ 88% Merino/9% Nylon/ 3% LYCRA®
Fabric Cuff	430gg 2x2 rib/98% Merino/2% LYCRA®
Fit	Regular
Sizes	S-XXL

- Corespun fabric for enhanced durability
- LYCRA® content for stretch and mobility
- Elastic waist with internal drawcords for adjustability
- Hand pockets
- Tapered leg opening
- Ribbed leg cuffs
- Inseam: 76.5cm/30", size L
- Icebreaker pip label



104345001
BLACK

104345011
JET HTHR

104345423
MIDNIGHT NAVY
NEW



MEN'S UNDERWEAR


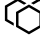
Natural performance intimates, designed by nature as your primary next-to-skin layer, providing comfort, style and all-day protection.

NEXT TO SKIN - UNDERWEAR

SEAMLESS

NEW STYLE

ANATOMICA SEAMLESS BOXERS

1/2   - Cool-Lite™

Fabric 230gm tubular knit/40% Merino/
40% TENCEL®/14% Nylon/6% LYCRA®

Fit Slim

Sizes S-XXL

- New seamless construction for mobility and to prevent chafing
- Cool-Lite™ fabric for comfort in warm to hot conditions
- LYCRA® content for stretch and mobility
- Nylon content for durability
- Contoured pouch
- Flatlock seams prevent chafing
- Gusset for comfort and mobility
- Inseam: 12.5cm/5", size L
- Icebreaker knitted logo


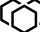


104935034
MONSOON HTHR
NEW



104935615
PORT ROYALE
NEW

ANATOMICA SEAMLESS LONG BOXERS

1/2   - Cool-Lite™

Fabric 230gm tubular knit/40% Merino/
40% TENCEL®/14% Nylon/6% LYCRA®

Fit Slim

Sizes S-XXL

- New seamless construction for mobility and to prevent chafing
- Cool-Lite™ fabric for comfort in warm to hot conditions
- LYCRA® content for stretch and mobility
- Nylon content for durability
- Contoured pouch
- Flatlock seams prevent chafing
- Gusset for comfort and mobility
- Inseam: 17cm/6¾", size L
- Icebreaker knitted logo



104936034
MONSOON HTHR
NEW



104936615
PORT ROYALE
NEW

NEW STYLE

NEXT TO SKIN - UNDERWEAR

COOL-LITE

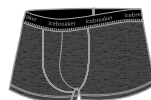
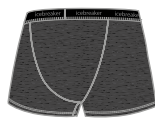
ANATOMICA COOL-LITE TRUNKS

NEW STYLE

½   - Cool-Lite™  - Corespun

Fabric	155gm jersey corespun/50% Merino/ 33% TENCEL®/12% Nylon/5% Spandex
Fit	Slim
Sizes	S-XXL

- Cool-Lite™ fabric for comfort in warm to hot conditions
- Corespun fabric for enhanced durability
- Spandex content for stretch and mobility
- Contoured pouch
- Flatlock seams prevent chafing
- Gusset for comfort and mobility
- Inseam: 7.2cm/2¾", size L
- Icebreaker branded elastic waistband



105223030
BLACK HTHR
NEW



105223423
MIDNIGHT NAVY
NEW



105223617
ROCKET
NEW



105223427
ESTATE BLUE
NEW

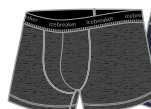
ANATOMICA COOL-LITE BOXERS

NEW STYLE

½   - Cool-Lite™  - Corespun

Fabric	155gm jersey corespun/50% Merino/ 33% TENCEL®/12% Nylon/5% Spandex
Fit	Slim
Sizes	S-XXL

- Cool-Lite™ fabric for comfort in warm to hot conditions
- Corespun fabric for enhanced durability
- Spandex content for stretch and mobility
- Contoured pouch
- Flatlock seams prevent chafing
- Gusset for comfort and mobility
- Inseam: 11.3cm/4½", size L
- Icebreaker branded elastic waistband



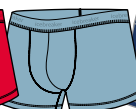
105246030
BLACK HTHR
NEW



105246423
MIDNIGHT NAVY
NEW



105246617
ROCKET
NEW



105246439
WATERFALL
NEW



105246427
ESTATE BLUE
NEW

L

ANATOMICA TANK

½   - Corespun

Fabric 150gm jersey corespun/
83% Merino/12% Nylon/
5% LYCRA®

Fit Slim

Sizes S-XXL

- Corespun fabric for enhanced durability
- LYCRA® content for stretch and mobility
- Center back length: 71.9cm/28¼", size L
- Icebreaker tonal screen print logo



103034001
BLACK



103034104
SNOW

ANATOMICA SS CREWE

  - Corespun

Fabric 150gm jersey corespun/
83% Merino/12% Nylon/
5% LYCRA®

Fit Slim

Sizes S-XXL

- Corespun fabric for enhanced durability
- LYCRA® content for stretch and mobility
- Center back length: 73cm/28¾", size L
- Icebreaker tonal screen print logo



103033001
BLACK



103033002
JET HTHR



103033016
METRO HTHR
NEW



103033423
MIDNIGHT
NAVY



103033104
SNOW

ANATOMICA SS V

  - Corespun

Fabric 150gm jersey corespun/
83% Merino/12% Nylon/
5% LYCRA®

Fit Slim

Sizes S-XXL

- Corespun fabric for enhanced durability
- LYCRA® content for stretch and mobility
- Center back length: 73cm/28¾", size L
- Icebreaker tonal screen print logo



103661001
BLACK



103661104
SNOW

ANATOMICA BRIEFS

¼   - Corespun

Fabric 150gm jersey corespun/
83% Merino/12% Nylon/
5% LYCRA®

Fit Slim

Sizes S-XXL

- Corespun fabric for enhanced durability
- LYCRA® content for stretch and mobility
- Contoured pouch
- Icebreaker branded elastic waistband



103031001
BLACK



103031002
JET HTHR



103031038
STRIPE
GRITSTONE HTHR
NEW



103031427
STRIPE
ESTATE BLUE
NEW



ANATOMICA BOXERS

½   - Corespun

Fabric 150gm jersey corespun/
83% Merino/12% Nylon/
5% LYCRA®

Fit Slim

Sizes S-XXL

- Corespun fabric for enhanced durability
- LYCRA® content for stretch and mobility
- Contoured pouch
- Inseam: 11.6cm/4½", size L
- Icebreaker branded elastic waistband



103029010
BLACK



103029011
JET HTHR



103029016
METRO HTHR
NEW



103029423
MIDNIGHT NAVY



103029617
ROCKET
NEW



103029038
STRIPE
GRITSTONE HTHR
NEW



103029427
STRIPE
ESTATE BLUE
NEW



103029615
STRIPE
PORT ROYALE
NEW



ANATOMICA LONG BOXERS

½   - Corespun

Fabric 150gm jersey corespun/
83% Merino/12% Nylon/
5% LYCRA®

Fit Slim

Sizes S-XXL

- Corespun fabric for enhanced durability
- LYCRA® content for stretch and mobility
- Contoured pouch
- Inseam: 15cm/6", size L
- Icebreaker branded elastic waistband



103055010
BLACK



103055011
JET HTHR



103055427
STRIPE
ESTATE BLUE
NEW





MEN'S BASE LAYER

Natural performance next-to-skin essentials,
designed by nature as your primary layer for
comfort, support and all-day protection.

NEXT TO SKIN - BASE LAYER

260 ZONE

260 g/m²

260 ZONE LS CREWE



Fabric Main	260gm jersey/97% Merino/3% LYCRA®
Fabric Mesh	180gm eyelet/98% Merino/1% LYCRA®/1% Nylon
Fabric Insert	215gm waffle/100% Merino
Fit	Slim
Sizes	S-XXL

- LYCRA® content for stretch and mobility
- Zoned body mapping technology for optimal thermal regulation
- Strategically placed merino mesh for ventilation
- Flatlock seams prevent chafing
- Raglan sleeve construction for mobility
- Underarm gusset for comfort and mobility
- Dropped front and back hem for added coverage
- Center back length: 75.9cm/30"; size L
- Icebreaker heat transfer logo



104360A01
JET HTHR/
BLACK

260 ZONE LS HALF ZIP



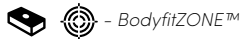
Fabric Main	260gm jersey/97% Merino/3% LYCRA®
Fabric Mesh	180gm eyelet/98% Merino/1% LYCRA®/1% Nylon
Fabric Insert	215gm waffle/100% Merino
Fit	Slim
Sizes	S-XXL

- LYCRA® content for stretch and mobility
- Zoned body mapping technology for optimal thermal regulation
- Zip neck collar for temperature regulation
- Strategically placed merino mesh for ventilation
- Flatlock seams prevent chafing
- Raglan sleeve construction for mobility
- Underarm gusset for comfort and mobility
- Dropped front and back hem for added coverage
- Center back length: 76.4cm/30"; size L
- Icebreaker heat transfer logo



104361A01
JET HTHR/
BLACK

260 ZONE LEGGINGS



Fabric Main	260gm jersey/97% Merino/3% LYCRA®
Fabric Mesh	180gm eyelet/99% Merino/ 1% LYCRA®
Fabric Insert	215gm waffle/100% Merino
Fit	Slim
Sizes	S-XXL

- LYCRA® content for stretch and mobility
- Zoned body mapping technology for optimal thermal regulation
- Icebreaker branded brushed elastic waistband
- Strategically placed merino mesh for ventilation
- Flatlock seams prevent chafing
- Gusset for comfort and mobility
- Inseam: 75.1cm/29½"; size L



104364A01
JET HTHR/
BLACK

200 ZONE LS CREWE



Fabric Main	200gm jersey/96% Merino/4% LYCRA®
Fabric Mesh	180gm eyelet/98% Merino/1% LYCRA®/1% Nylon
Fit	Slim
Sizes	S-XXL

- LYCRA® content for stretch and mobility
- Strategically placed merino mesh for ventilation
- Flatlock seams prevent chafing
- Raglan sleeve construction for mobility
- Underarm gusset for comfort and mobility
- Dropped front and back hem for added coverage
- Center back length: 76.5cm/30", size L
- Icebreaker heat transfer logo



104355A01
JET HTHR/BLACK

200 ZONE LS HALF ZIP



Fabric Main	200gm jersey/96% Merino/4% LYCRA®
Fabric Mesh	180gm eyelet/98% Merino/1% LYCRA®/1% Nylon®
Fit	Slim
Sizes	S-XXL

- LYCRA® content for stretch and mobility
- Zip neck collar for temperature regulation
- Strategically placed merino mesh for ventilation
- Flatlock seams prevent chafing
- Raglan sleeve construction for mobility
- Underarm gusset for comfort and mobility
- Dropped front and back hem for added coverage
- Center back length: 76.5cm/30", size L
- Icebreaker heat transfer logo



104356A01
JET HTHR/BLACK

200 ZONE SHORTS

½  - BodyfitZONE™


Fabric Main	200gm jersey/96% Merino/ 4% LYCRA®
Fabric Mesh	180gm eyelet/98% Merino/ 1% LYCRA®/1% Nylon
Fit	Slim
Sizes	S-XXL

- LYCRA® content for stretch and mobility
- Icebreaker branded brushed elastic waistband
- Strategically placed merino mesh for ventilation
- Flatlock seams prevent chafing
- Gusset for comfort and mobility
- Inseam: 27.9cm/10", size L



104357001
BLACK

200 ZONE LEGGINGS

 - BodyfitZONE™

Fabric Main	200gm jersey/96% Merino/ 4% LYCRA®
Fabric Mesh	180gm eyelet/98% Merino/ 1% LYCRA®/1% Nylon
Fit	Slim
Sizes	S-XXL

- LYCRA® content for stretch and mobility
- Icebreaker branded brushed elastic waistband
- Strategically placed merino mesh for ventilation
- Flatlock seams prevent chafing
- Gusset for comfort and mobility
- Inseam: 75.1cm/29½", size L



104358001
BLACK

NEXT TO SKIN - BASE LAYER

150 ZONE

150 g/m²

150 ZONE SS CREWE

 - BodyfitZONE™  - Corespun

Fabric Main	150gm jersey corespun/83% Merino/12% Nylon/5% LYCRA®
Fabric Mesh	120gm eyelet corespun/85% Merino/14% Nylon/1% LYCRA®
Fit	Slim
Sizes	S-XXL

- Corespun fabric for enhanced durability
- LYCRA® content for stretch and mobility
- Strategically placed merino mesh for ventilation
- Flatlock seams prevent chafing
- Raglan sleeve construction for mobility
- Underarm gusset for comfort and mobility
- Dropped front and back hem for added coverage
- Center back length: 74.8cm/29½", size L
- Icebreaker heat transfer logo



104346001
BLACK



104346434
LAPIS
NEW

150 ZONE LS CREWE

   - BodyfitZONE™  - Corespun

Fabric Main	150gm jersey corespun/83% Merino/12% Nylon/5% LYCRA®
Fabric Mesh	120gm eyelet corespun/85% Merino/14% Nylon/1% LYCRA®
Fit	Slim
Sizes	S-XXL

- Corespun fabric for enhanced durability
- LYCRA® content for stretch and mobility
- Strategically placed merino mesh for ventilation
- Flatlock seams prevent chafing
- Raglan sleeve construction for mobility
- Underarm gusset for comfort and mobility
- Dropped front and back hem for added coverage
- Center back length: 74.8cm/29½", size L
- Icebreaker heat transfer logo



104347001
BLACK



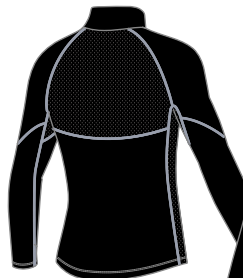
104347434
LAPIS
NEW

150 ZONE LS HALF ZIP

   - BodyfitZONE™  - Corespun

Fabric Main	150gm jersey corespun/83% Merino/12% Nylon/5% LYCRA®
Fabric Mesh	120gm eyelet corespun/85% Merino/14% Nylon/1% LYCRA®
Fit	Slim
Sizes	S-XXL

- Corespun fabric for enhanced durability
- LYCRA® content for stretch and mobility
- Zip neck collar for temperature regulation
- Strategically placed merino mesh for ventilation
- Flatlock seams prevent chafing
- Raglan sleeve construction for mobility
- Underarm gusset for comfort and mobility
- Dropped front and back hem for added coverage
- Center back length: 74.8cm/29½", size L
- Icebreaker heat transfer logo



104348001
BLACK



104348434
LAPIS
NEW

NEXT TO SKIN - BASE LAYER

150 ZONE

150 g/m²

150 ZONE LEGLESS

 - BodyfitZONE™  - Corespun

Fabric Main	150gm jersey corespun/ 83% Merino/12% Nylon/ 5% LYCRA®
Fabric Mesh	120gm eyelet corespun/ 85% Merino/14% Nylon/ 1% LYCRA®
Fit	Slim
Sizes	S-XXL

- Corespun fabric for enhanced durability
- LYCRA® content for stretch and mobility
- Icebreaker branded elastic waistband
- Strategically placed merino mesh for ventilation
- Flatlock seams prevent chafing
- Gusset for comfort and mobility
- Inseam: 60.4cm/23¾", size L



104349001
BLACK

150 ZONE LEGGINGS

 - BodyfitZONE™  - Corespun

Fabric Main	150gm jersey corespun/ 83% Merino/12% Nylon/ 5% LYCRA®
Fabric Mesh	120gm eyelet corespun/ 85% Merino/14% Nylon/ 1% LYCRA®
Fit	Slim
Sizes	S-XXL

- Corespun fabric for enhanced durability
- LYCRA® content for stretch and mobility
- Icebreaker branded elastic waistband
- Strategically placed merino mesh for ventilation
- Flatlock seams prevent chafing
- Gusset for comfort and mobility
- Inseam: 78.6cm/31", size L



104350001
BLACK

260 TECH LS CREWE



Fabric	260gm jersey/100% Merino
Fit	Slim
Sizes	S-XXL

- Offset shoulder seams prevent pack rub
- Flatlock seams prevent chafing
- Forward side seams for comfort
- Underarm gusset for comfort and mobility
- Drop tail hem for added coverage
- Center back length: 75.4cm/29¾", size L
- Icebreaker tonal embroidered logo



104371001
BLACK

260 TECH LS HALF ZIP



Fabric	260gm jersey/100% Merino
Fit	Slim
Sizes	S-XXL

- Zip neck collar for temperature regulation
- Offset shoulder seams prevent pack rub
- Flatlock seams prevent chafing
- Forward side seams for comfort
- Underarm gusset for comfort and mobility
- Drop tail hem for added coverage
- Center back length: 75.4cm/29¾", size L
- Icebreaker tonal embroidered logo



104372001
BLACK

260 TECH LEGGINGS



Fabric	260gm jersey/100% Merino
Fit	Slim
Sizes	S-XXL

- Icebreaker branded brushed elastic waistband
- Flatlock seams prevent chafing
- Gusset for comfort and mobility
- Inseam: 78.1cm/30¾", size L



104373001
BLACK

260 TECH LEGGINGS W/FLY



Fabric	260gm jersey/100% Merino
Fit	Slim
Sizes	S-XXL

- Icebreaker branded brushed elastic waistband
- Flatlock seams prevent chafing
- Contoured pouch with functioning fly
- Gusset for comfort and mobility
- Inseam: 78.1cm/30¾", size L



104374001
BLACK

NEXT TO SKIN - BASE LAYER

200 BODYFIT

200 g/m²

200 OASIS SS CREWE



Fabric	200gm jersey/100% Merino
Fit	Slim
Sizes	S-XXL

- Offset shoulder seams prevent pack rub
- Flatlock seams prevent chafing
- Underarm gusset for comfort and mobility
- Drop tail hem for added coverage
- Center back length: 75.4cm/29¾", size L
- Icebreaker tonal embroidered logo



104509001
BLACK

104509401
MIDNIGHT NAVY

104509013
GRITSTONE HTHR

104509427
ESTATE BLUE
NEW

200 OASIS LS CREWE



Fabric	200gm jersey/100% Merino
Fit	Slim
Sizes	S-XXL

- Offset shoulder seams prevent pack rub
- Flatlock seams prevent chafing
- Underarm gusset for comfort and mobility
- Drop tail hem for added coverage
- Center back length: 75.4cm/29¾", size L
- Icebreaker tonal embroidered logo



104365001
BLACK

104365401
MIDNIGHT NAVY

104365013
GRITSTONE HTHR

104365427
ESTATE BLUE
NEW

200 OASIS LS HALF ZIP



Fabric	200gm jersey/100% Merino
Fit	Slim
Sizes	S-XXL

- Zip neck collar for temperature regulation
- Offset shoulder seams prevent pack rub
- Flatlock seams prevent chafing
- Underarm gusset for comfort and mobility
- Drop tail hem for added coverage
- Center back length: 75.4cm/29¾", size L
- Icebreaker tonal embroidered logo



104367001
BLACK

104367013
GRITSTONE HTHR

200 OASIS LEGLESS



Fabric	200gm jersey/100% Merino
Fit	Slim
Sizes	S-XXL

- Icebreaker branded brushed elastic waistband
- Flatlock seams prevent chafing
- Gusset for comfort and mobility
- Inseam: 60cm/23½", size L



104368001
BLACK

200 OASIS LEGGINGS



Fabric	200gm jersey/100% Merino
Fit	Slim
Sizes	S-XXL

- Icebreaker branded brushed elastic waistband
- Flatlock seams prevent chafing
- Gusset for comfort and mobility
- Inseam: 78.1cm/30¾", size L



104369001
BLACK

200 OASIS LEGGINGS W/FLY



Fabric	200gm jersey/100% Merino
Fit	Slim
Sizes	S-XXL

- Icebreaker branded brushed elastic waistband
- Flatlock seams prevent chafing
- Contoured pouch with functioning fly
- Gusset for comfort and mobility
- Inseam: 78.1cm/30¾", size L



104370001
BLACK

NEXT TO SKIN - BASE LAYER

175 BODYFIT

175_{g/m²}

175 EVERYDAY SS CREWE



Fabric 175gm rib/100% Merino

Fit Slim

Sizes S-XXL

- Rib fabric provides stretch and comfort
- Center back length: 73.2cm/28¾", size L
- Icebreaker tonal embroidered logo



104482001
BLACK

104482423
MIDNIGHT NAVY

175 EVERYDAY LS CREWE



Fabric 175gm rib/100% Merino

Fit Slim

Sizes S-XXL

- Rib fabric provides stretch and comfort
- Center back length: 73.2cm/28¾", size L
- Icebreaker tonal embroidered logo



104483001
BLACK

104483012
MONSOON

175 EVERYDAY LS HALF ZIP



Fabric 175gm rib/100% Merino

Fit Slim

Sizes S-XXL

- Rib fabric provides stretch and comfort
- Zip neck collar for temperature regulation
- Center back length: 73.2cm/28¾", size L
- Icebreaker tonal embroidered logo



104484001
BLACK

104484012
MONSOON

NEXT TO SKIN - BASE LAYER

175 BODYFIT

175 g/m²

175 EVERYDAY BOXERS W/FLY



Fabric	175gm rib/100% Merino
Fit	Slim
Sizes	S-XXL

- Rib fabric provides stretch and comfort
- Icebreaker branded brushed elastic waistband
- Contoured pouch with functioning fly
- Gusset for comfort and mobility
- Inseam: 11.1cm/4¼", size L



104485001
BLACK

175 EVERYDAY LEGGINGS



Fabric	175gm rib/100% Merino
Fit	Slim
Sizes	S-XXL

- Rib fabric provides stretch and comfort
- Icebreaker branded brushed elastic waistband
- Inseam: 77.2cm/30½", size L



104487001
BLACK

175 EVERYDAY LEGGINGS W/FLY



Fabric	175gm rib/100% Merino
Fit	Slim
Sizes	S-XXL

- Rib fabric provides stretch and comfort
- Icebreaker branded brushed elastic waistband
- Contoured pouch with functioning fly
- Inseam: 77.2cm/30½", size L

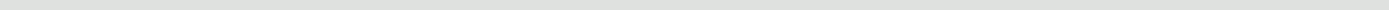


104510001
BLACK



KIDS

Designed to help those closest to nature
move and adapt naturally.

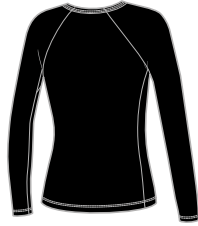


200 OASIS LS CREWE

1/4 AGES 2-4 1/2 AGES 5-14

Fabric	200gm jersey/100% Merino
Fit	Slim
Sizes	2-14

- Flatlock seams prevent chafing
- Raglan sleeve construction for mobility
- Center back length: 52.8cm/20¾", size 10
- Icebreaker tonal embroidered logo



104501001
BLACK



104501013
GRITSTONE HTHR

200 OASIS LEGGINGS

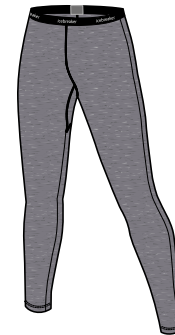
1/4 AGES 2-4 1/2 AGES 5-14

Fabric	200gm jersey/100% Merino
Fit	Slim
Sizes	2-14

- Icebreaker branded brushed elastic waistband
- Flatlock seams prevent chafing
- Gusset for comfort and mobility
- Inseam: 60.5cm/23¾", size 10



104503001
BLACK

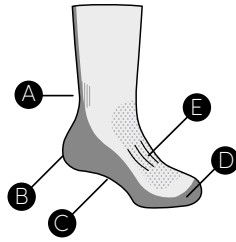


104503013
GRITSTONE HTHR

KIDS SOCKS

KIDS CONSTRUCTION FEATURES

- A Achilles support**
keeps your sock in place
- B Reinforced heel and toe**
for durability and strength
- C Instep support** for stability
- D Seamless toe closure** to reduce bulk and prevent blisters
- E Breathe zone**
for improved ventilation



HIKE CREW LIGHT CUSHION

Versatile, outdoor Kids sock with underfoot cushioning

CONTENT:	
MERINO	62%
NYLON	36%
LYCRA®	2%
SOCK HEIGHT: Crew	

UNISEX S M L XL XXL



104885C17
MACRO STRIPE
ORCHID/
BLUE SPRUCE
NEW



104885C18
MACRO STRIPE
PORT ROYALE/
LAPIS
NEW

LIFESTYLE CREW ULTRALIGHT CUSHION

Versatile, ultra lightweight Kids sock for all-day comfort

CONTENT:	
MERINO	50%
NYLON	46%
LYCRA®	4%
SOCK HEIGHT: Crew	

UNISEX S M L XL XXL



105085024
WANNA RIDE?
TWISTER HTHR
NEW



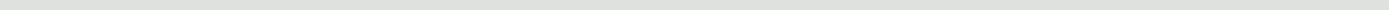
105085431
WANNA RIDE?
THUNDER
NEW





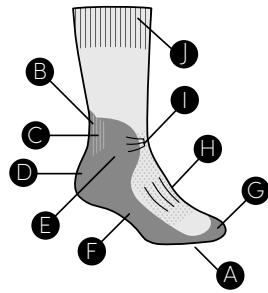
SOCKS

Naturally designed to work in harmony with
your body to help you go the distance.



HIKE+ CONSTRUCTION FEATURES

- A Anatomical toe box**
for unique left and right fit
- B Sculptured cushion**
maximizes fit and comfort
- C Achilles support**
keeps your sock in place
- D Reinforced heel and toe**
for durability and strength
- E Ankle support** enhances fit
- F Instep support** for stability
- G Seamless toe closure** to reduce bulk and prevent blisters



- H Breathe zone**
for improved ventilation
- I Function junction**
to eliminate bulk
- J Comfort cuff**
wide welt for comfort

HIKE+ MINI LIGHT CUSHION

Anatomically sculptured, half cushioned hike sock

CONTENT:	W	M
MERINO	60%	62%
NYLON	38%	37%
LYCRA®	2%	1%

SOCK HEIGHT: Mini

WOMEN'S WS WM WL



100326H40 BLIZZARD HTHR 100326002 JET HTHR 100326B21 WATERFALL NEW

MEN'S S M L XL



100327014 FOSSIL 100327140 JET HTHR 100327B17 ESTATE BLUE NEW

HIKE+ CREW LIGHT CUSHION

Anatomically sculptured, half cushioned hike sock

CONTENT:	W/M
MERINO	61%
NYLON	37%
LYCRA®	2%

SOCK HEIGHT: Crew

WOMEN'S WS WM WL



IBND14H40 BLIZZARD HTHR IBND14002 JET HTHR IBND14431 THUNDER IBND14A25 PANTHER NEW

MEN'S S M L XL



IBND08F29 TWISTER HTHR IBND08J70 JET HTHR IBND08431 THUNDER IBND08A24 PANTHER NEW

HIKE+ CREW MEDIUM CUSHION

Anatomically sculptured, fully cushioned hike sock

CONTENT:	W	M
MERINO	63%	66%
NYLON	35%	32%
LYCRA®	2%	2%

SOCK HEIGHT: Crew

WOMEN'S WS WM WL



IBND15011 JET HTHR IBND15017 BLIZZARD HTHR

MEN'S S M L XL



IBND09F30 JET HTHR IBND09024 TWISTER HTHR IBND09003 MONSOON

HIKE+ CREW HEAVY CUSHION

Anatomically sculptured, fully and densely cushioned hike sock

CONTENT:	W/M
MERINO	63%
NYLON	34%
LYCRA®	3%

SOCK HEIGHT: Crew

WOMEN'S WS WM WL



100608011 JET HTHR

MEN'S S M L XL

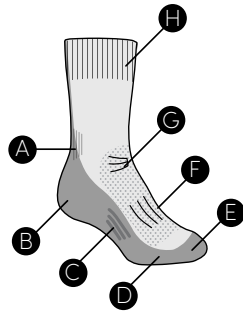


100740K50 JET HTHR

HIKE

HIKE CONSTRUCTION FEATURES

- A Achilles support**
keeps your sock in place
- B Reinforced heel and toe**
for durability and strength
- C Instep support** for stability
- D Double-up merino cushioning**
for increased comfort in heel and metatarsal bones
- E Seamless toe closure** to reduce bulk and prevent blisters
- F Breathe zone**
for improved ventilation
- G Function junction**
to eliminate bulk
- H Comfort cuff**
wide welt for comfort



HIKE LINER CREW ULTRALIGHT CUSHION

Thin and light, yet highly durable, hike liner

CONTENT:	W/M
MERINO	55%
NYLON	43%
LYCRA®	2%
SOCK HEIGHT: Crew	

WOMEN'S WS WM WL



103954001
BLACK

MEN'S S M L XL



103955001
BLACK

HIKE CREW LIGHT CUSHION

Highly durable, half cushioned hike sock with double-up cushioning for comfort

CONTENT:	W/M
MERINO	65%
NYLON	33%
LYCRA®	2%
SOCK HEIGHT: Crew	

WOMEN'S WS WM WL



101277024
TWISTER HTHR



101277012
MONSOON

MEN'S S M L XL



101288001
BLACK



101288024
TWISTER HTHR

HIKE CREW MEDIUM CUSHION

Highly durable, fully cushioned hike sock with double-up cushioning for comfort

CONTENT:	W/M
MERINO	65%
NYLON	33%
LYCRA®	2%
SOCK HEIGHT: Crew	

WOMEN'S WS WM WL



101278001
BLACK

MEN'S S M L XL



101289011
JET HTHR

HIKE

MOUNTAINEER MID CALF EXPEDITION CUSHION

Expedition weight, fully and densely cushioned mountaineering sock

CONTENT:	W/M
MERINO	79%
NYLON	20%
LYCRA®	1%
SOCK HEIGHT: Mid Calf	

WOMEN'S WS WM WL



101280044
NATURAL-
MONSOON HTHR

MEN'S S M L XL



101291044
NATURAL-
MONSOON HTHR

HIKE COOL-LITE LOW CUT LIGHT CUSHION



Ultra lightweight, Cool-Lite™ fabric, hike sock for comfort in warm to hot conditions

CONTENT:	W/M
NYLON	38%
MERINO	30%
TENCEL®	30%
LYCRA®	2%
SOCK HEIGHT: Low Cut	

WOMEN'S WS WM WL



104664011
JET HTHR



104664432
BLUE SPRUCE
NEW

MEN'S S M L XL



104657011
JET HTHR



104657423
MIDNIGHT NAVY
NEW

HIKE COOL-LITE 3/4 CREW LIGHT CUSHION



Ultra lightweight, Cool-Lite™ fabric, hike sock for comfort in warm to hot conditions

CONTENT:	W/M
NYLON	41%
MERINO	28%
TENCEL®	28%
LYCRA®	3%
SOCK HEIGHT: 3/4 Crew	

WOMEN'S WS WM WL



104662011
JET HTHR



104662432
BLUE SPRUCE
NEW

MEN'S S M L XL



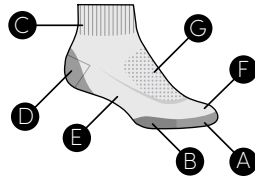
104661011
JET HTHR



104661423
MIDNIGHT NAVY
NEW

RUN+ CONSTRUCTION FEATURES

- A Anatomical toe box**
for unique left and right fit
- B Sculptured cushion**
maximizes fit and comfort
- C Achilles support**
keeps your sock in place
- D Reinforced heel and toe**
for durability and strength
- F Instep support** for stability
- G Seamless toe closure** to reduce bulk and prevent blisters
- H Breathe zone**
for improved ventilation



RUN+ FINE GAUGE MICRO ULTRALIGHT CUSHION



Anatomically sculptured, thin and ultra lightweight run sock

CONTENT:	W	M
MERINO	61%	60%
NYLON	37%	38%
LYCRA®	2%	2%

SOCK HEIGHT: Micro

WOMEN'S WS WM WL

MEN'S S M L XL



104215106
WHITE



104215001
BLACK



104212024
TWISTER HTHR



104212001
BLACK

RUN+ FINE GAUGE MINI ULTRALIGHT CUSHION



Anatomically sculptured, thin and ultra lightweight run sock

CONTENT:	W/M
MERINO	49%
NYLON	49%
LYCRA®	2%

SOCK HEIGHT: Mini

WOMEN'S WS WM WL

MEN'S S M L XL



104216106
WHITE



104216001
BLACK



104213024
TWISTER HTHR

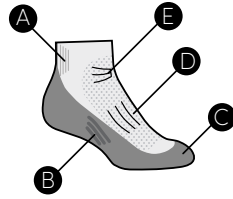


104213001
BLACK

TRAINING

MULTISPORT CONSTRUCTION FEATURES

- A Achilles support**
keeps your sock in place
- B Instep support** for stability
- C Seamless toe closure** to reduce bulk and prevent blisters
- D Breathe zone**
for improved ventilation
- E Function junction**
to eliminate bulk



MULTISPORT MICRO ULTRALIGHT CUSHION

Multi-purpose, streamlined and ultra lightweight sport sock

CONTENT:	W	M
MERINO	56%	55%
NYLON	42%	43%
LYCRA®	2%	2%

SOCK HEIGHT: Micro

WOMEN'S WS WM WL



MEN'S S M L XL



MULTISPORT MINI ULTRALIGHT CUSHION

Multi-purpose, streamlined and ultra lightweight sport sock

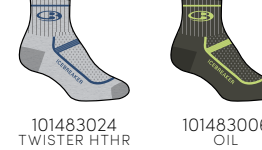
CONTENT:	W	M
MERINO	51%	52%
NYLON	47%	46%
LYCRA®	2%	2%

SOCK HEIGHT: Mini

WOMEN'S WS WM WL



MEN'S S M L XL



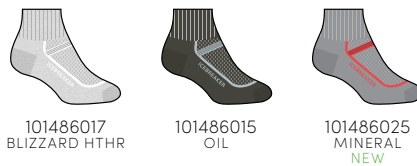
MULTISPORT MINI LIGHT CUSHION

Multi-purpose, streamlined sport sock with dense underfoot cushioning

CONTENT:	W	M
MERINO	54%	53%
NYLON	44%	45%
LYCRA®	2%	2%

SOCK HEIGHT: Mini

WOMEN'S WS WM WL

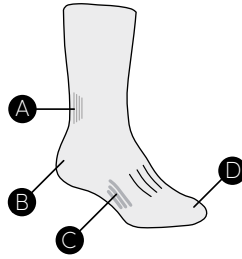


MEN'S S M L XL



LIFESTYLE CONSTRUCTION FEATURES

- A Achilles support**
keeps your sock in place
- B Reinforced heel and toe**
for durability and strength
- C Instep support** for stability
- D Seamless toe closure** to reduce bulk and prevent blisters



LIFESTYLE CREW FINE GAUGE ULTRALIGHT CUSHION

200N
FINE
GAUGE

UNISEX S/M L/XL

Luxurious fine gauge lifestyle sock for all day comfort

CONTENT

SOLID:
MERINO 65%
NYLON 33%
LYCRA® 2%

CADENCE:
MERINO 56%
NYLON 42%
LYCRA® 2%

SNAP HEAD GEO:
MERINO 51%
NYLON 47%
LYCRA® 2%

SOCK HEIGHT: Crew



104186001
BLACK



104186024
TWISTER HTHR



104186423
MIDNIGHT NAVY
NEW



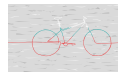
105081004
CADENCE
GRITSTONE HTHR
NEW



105081401
CADENCE
MIDNIGHT NAVY
NEW



105081017
CADENCE
BLIZZARD HTHR
NEW



105082004
SNAP HEAD GEO
GRITSTONE HTHR
NEW



105082401
SNAP HEAD GEO
MIDNIGHT NAVY
NEW



105082511
SNAP HEAD GEO
ORCHID
NEW



LIFESTYLE

LIFESTYLE
COOL-LITE
FINE GAUGE
NO SHOW
ULTRALIGHT CUSHION

200N
FINE
GAUGE

 - Cool-Lite™

Ultra lightweight, Cool-Lite™ fabric, luxurious lifestyle sock for comfort in warm to hot conditions

CONTENT:	W/M
NYLON	42%
MERINO	28%
TENCEL®	28%
LYCRA®	2%

SOCK HEIGHT: No Show

WOMEN'S WS WM WL



104683001
BLACK



104683017
BLIZZARD HTHR

MEN'S S M L XL



104685001
BLACK



104685017
BLIZZARD HTHR

LIFESTYLE
COOL-LITE
FINE GAUGE
CREW
ULTRALIGHT CUSHION

200N
FINE
GAUGE

 - Cool-Lite™

Ultra lightweight, Cool-Lite™ fabric, luxurious lifestyle sock for comfort in warm to hot conditions

CONTENT:	W	M
NYLON	38%	36%
MERINO	30%	31%
TENCEL®	30%	31%
LYCRA®	2%	2%

SOCK HEIGHT: Crew

WOMEN'S WS WM WL



104682001
BLACK



104682017
BLIZZARD HTHR

MEN'S S M L XL



104684001
BLACK



104684017
BLIZZARD HTHR

LIFESTYLE

LIFESTYLE CREW ULTRALIGHT CUSHION

Durable, ultra lightweight lifestyle sock

CONTENT

SOLID:	W	M
MERINO	59%	60%
NYLON	39%	38%
LYCRA®	2%	2%

STRIPE:	-	M
MERINO	-	58%
NYLON	-	40%
LYCRA®	-	2%

SOCK HEIGHT: Crew

WOMEN'S WS WM WL



101301001
BLACK



101301002
JET HTHR

MEN'S S M L XL



101285001
BLACK



101285424
FATHOM HTHR



104691001
STRIPE
BLACK



104691B19
STRIPE
LAPIS
NEW

LIFESTYLE CREW LIGHT CUSHION

Warm, lightweight half cushioned lifestyle sock

CONTENT:	W/M
MERINO	61%
NYLON	37%
LYCRA®	2%

SOCK HEIGHT: Crew

WOMEN'S WS WM WL



IBN313001
BLACK

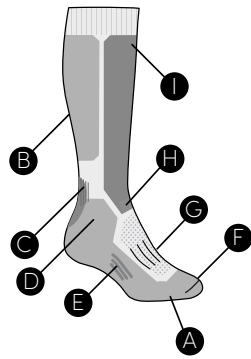
MEN'S S M L XL



IBN327001
BLACK

SKI+ CONSTRUCTION FEATURES

- A Anatomical toe box**
for unique left and right fit
- B Sculptured cushion**
maximizes fit and comfort
- C Achilles support**
keeps your sock in place
- D Ankle support** enhances fit
- E Instep support** for stability
- F Seamless toe closure**
to reduce bulk and prevent blisters
- G Breathe zone**
for improved ventilation
- H Function junction**
to eliminate bulk
- I Comfort cuff**
wide welt for comfort



SKI+
OVER THE CALF
LIGHT CUSHION

Anatomically sculptured, strategically cushioned ski sock

CONTENT:	W	M
MERINO	53%	54%
NYLON	44%	43%
LYCRA®	3%	3%

SOCK HEIGHT: Over the Calf

WOMEN'S WS WM WL



104879001
BLACK

MEN'S S M L XL



104882001
BLACK

SKI+
OVER THE CALF
MEDIUM CUSHION

Anatomically sculptured, fully cushioned ski sock

CONTENT:	W	M
MERINO	52%	53%
NYLON	45%	45%
LYCRA®	3%	2%

SOCK HEIGHT: Over the Calf

WOMEN'S WS WM WL



104881A11
GRITSTONE
HTHR/BLACK
NEW

MEN'S S M L XL

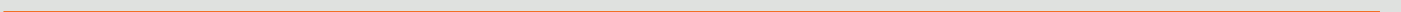


104884A11
GRITSTONE HTHR/
BLACK
NEW



ACCESSORIES

Designed to provide ultimate comfort next-to-skin,
natural warmth and luxury.



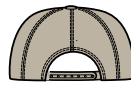
ACCESSORIES - HEADWEAR

ICEBREAKER LOGO HAT

NEW STYLE

Fabric Shell	310gm canvas/70% Merino/ 30% Sorona® Polyester
Fabric Lining	130gm jersey corespun/52% Merino/ 35% TENCEL®/13% Nylon
Fit	Regular
Sizes	One size

- Sorona® bio-based polyester for durability
- Mid crown cap
- Cool-Lite™ lining at band
- Snapback closure
- Icebreaker embroidered logo and pip label



104990212
BRITISH TAN
NEW



104990003
MONSOON
NEW

ICEBREAKER PATCH HAT

NEW STYLE

Fabric Shell	310gm canvas/70% Merino/ 30% Sorona® Polyester
Fabric Lining	130gm jersey corespun/52% Merino/ 35% TENCEL®/13% Nylon
Fit	Regular
Sizes	One size

- Sorona® bio-based polyester for durability
- Mid crown cap
- Cool-Lite™ lining at band
- Snapback closure
- Icebreaker pip logo and label



105255401
ESTATE BLUE
NEW



105255001
BLACK
NEW

icebreaker

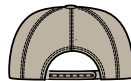


ICEBREAKER GRAPHIC HAT

NEW STYLE

Fabric Shell	310gm canvas/70% Merino/ 30% Sorona® Polyester
Fabric Lining	130gm jersey corespun/52% Merino/ 35% TENCEL®/13% Nylon
Fit	Regular
Sizes	One size

- Sorona® bio-based polyester for durability
- Mid crown cap
- Cool-Lite™ lining at band
- Snapback closure
- Icebreaker graphic patch logo and pip label



105254401
ESTATE BLUE/
BRITISH TAN
NEW

L



105254001
MONSOON/BLACK
NEW

L

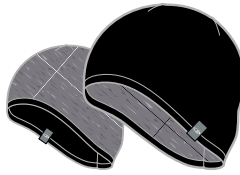


ACCESSORIES - HEADWEAR

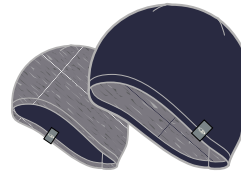
POCKET HAT

Fabric	200gm jersey/100% Merino
Fit	Slim
Sizes	One Size

- Reversible, two-color beanie
- Icebreaker wrap label



IBM200A04
BLACK/
GRITSTONE HTHR



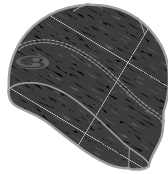
IBM200B13
MIDNIGHT NAVY/
GRITSTONE HTHR

COOL-LITE FLEXI BEANIE

 - Cool-Lite™  - Corespun

Fabric	130gm jersey corespun/ 52% Merino/35% TENCEL®/ 13% Nylon
Fit	Slim
Sizes	One Size

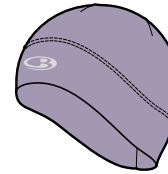
- Cool-Lite™ fabric for comfort in warm to hot conditions
- Corespun fabric for enhanced durability
- Double layer cuff for comfort
- Icebreaker reflective heat transfer logo



103708030
BLACK HTHR
NEW



103708313
SHALE HTHR
NEW



103708511
ORCHID
NEW

COOL-LITE FLEXI HEADBAND

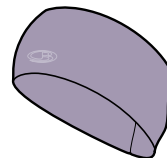
 - Cool-Lite™  - Corespun

Fabric	130gm jersey corespun/ 52% Merino/35% TENCEL®/ 13% Nylon
Fit	Regular
Sizes	One Size

- Cool-Lite™ fabric for comfort in warm to hot conditions
- Corespun fabric for enhanced durability
- Double layer design prevents chafing
- Height: 10cm/4", one size
- Icebreaker tonal embroidered logo



103768030
BLACK HTHR



103768511
ORCHID
NEW

ACCESSORIES - NECKWEAR

COOL-LITE FLEXI CHUTE

 - Cool-Lite™  - Corespun

Fabric 130gm jersey corespun/
52% Merino/35% TENCEL®/
13% Nylon

Fit Regular

Sizes One Size

- Cool-Lite™ fabric for comfort in warm to hot conditions
- Corespun fabric for enhanced durability
- Single layer construction
- Height: 50cm/20"
- Icebreaker tonal embroidered logo



103769030
BLACK HTHR



103769313
SHALE HTHR
NEW



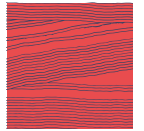
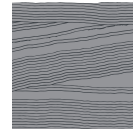
103769025
MINERAL
NEW



104992025
1000 LINES
MINERAL
NEW



104992618
1000 LINES
FIRE
NEW



COOL-LITE FLEXI HALF CHUTE

 - Cool-Lite™  - Corespun

Fabric 130gm jersey corespun/
52% Merino/35% TENCEL®/
13% Nylon

Fit Regular

Sizes One Size

- Cool-Lite™ fabric for comfort in warm to hot conditions
- Corespun fabric for enhanced durability
- Single layer construction
- Height: 25cm/10"
- Icebreaker tonal embroidered logo



103770030
BLACK HTHR



103770313
SHALE HTHR
NEW

ADVENTURE - HANDWEAR

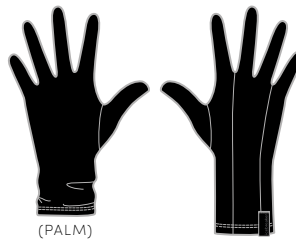
ICEBREAKER GLOVES SYSTEM

STYLE	FABRIC	ACTIVITY	DESCRIPTION
200 Oasis Glove Liners	200gm jersey/96% Merino/4% LYCRA®	Icebreaker Adventure	Lightweight warmth
260 Tech Glove Liners	260gm terry/95% Merino/5% LYCRA®	Icebreaker Adventure	Midweight warmth
Quantum Gloves	260gm terry/98% Merino/2% LYCRA®	Icebreaker Adventure	Performance adventure glove
Sierra Gloves	200gm brushed RealFLEECE®/ 88% Merino/9% Nylon/3% LYCRA®	Icebreaker Life	Our warmest glove

200 OASIS GLOVE LINERS

Fabric	200gm jersey/96% Merino/4% LYCRA®
Fit	Slim
Sizes	XS-XL

- LYCRA® enhances fit
- Icebreaker wrap label on right hand



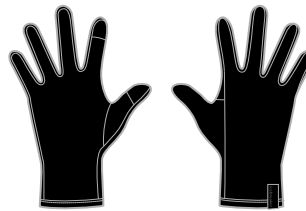
(PALM)

IBM207001
BLACK

260 TECH GLOVE LINERS

Fabric	260gm jersey/95% Merino/5% LYCRA®
Fit	Slim
Sizes	XS-XL

- LYCRA® enhances fit
- Touchscreen technology in thumb and index fingertips
- Icebreaker wrap label on right hand



(PALM)

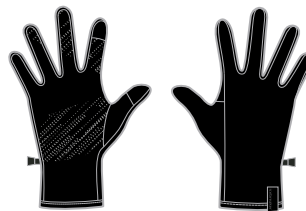
104827001
BLACK



QUANTUM GLOVES

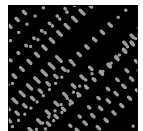
Fabric	260gm terry/98% Merino/2% LYCRA®
Fit	Slim
Sizes	XS-XL

- LYCRA® enhances fit
- Touchscreen technology in thumb and index fingertips
- Silicone texture on palm for enhanced grip
- Clips store gloves together
- Icebreaker wrap label on right hand



(PALM)

104828001
BLACK



PALM TEXTURE

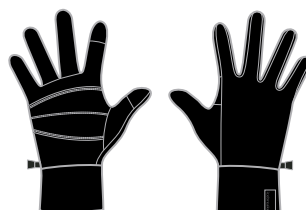


SIERRA GLOVES

 - RealFLEECE®  - Corespun

Fabric Main	200gm brushed RealFLEECE®/ 88% Merino/9% Nylon/3% LYCRA®
Fabric Cuffs	260gm jersey/97% Merino/3% LYCRA®
Fit	Slim
Sizes	XS-XL

- Corespun fabric for enhanced durability
- LYCRA® content enhances fit and dry time
- Touchscreen technology in thumb and index fingertips
- Faux suede palm for enhanced grip
- Icebreaker wrap label on right hand



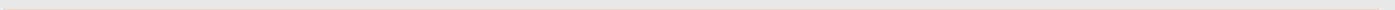
(PALM)

104829001
BLACK





REFERENCE



SIZING GUIDE – WOMEN’S

SIZING Measurements refer to body size, not garment dimensions.

In instances when your body measurements are midway between two sizes, go to the smaller size for a tighter fit or the larger size for a looser fit.

UPPER BODY MEASUREMENTS

WOMAN (INCHES)	WXS	WS	WM	WL	WXL
BUST	32¼	34½	37	39½	42
HEIGHT	5' 5¾	5' 6	5' 6½	5' 7	5' 7½

WOMAN (CM)	WXS	WS	WM	WL	WXL
BUST	82.0	88.0	94.0	100.0	107.0
HEIGHT	167.0	168.0	169.0	170.0	171.0

HOW TO MEASURE:

BUST	Place tape measure across your back, underneath your arms and then across the widest point on the bust. Don't 'squash' yourself.
HEIGHT	This is your true height, without the assistance of shoes.

In instances when your body measurements for bust and height are in two different suggested sizes, we recommend going with the size from your bust measurement.

LOWER BODY MEASUREMENTS

WOMAN (INCHES)	WXS	WS	WM	WL	WXL
WAIST	25¼	27½	30	32¼	35
HIP	35½	37¾	40	42	44½

WOMAN (CM)	WXS	WS	WM	WL	WXL
WAIST	64.0	70.0	76.0	82.0	89.0
HIP	90.0	96.0	102.0	107.0	113.0

WOMAN (INCHES)	WXS	WS	WM	WL	WXL			
WOVEN BOTTOMS SIZES	26	27	28	29	30	31	32	33

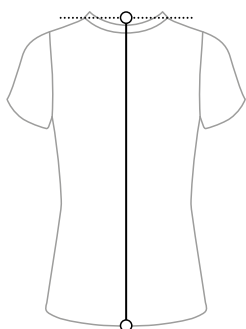
HOW TO MEASURE:

WAIST	Measure the smallest part of the torso.
HIP	Place the measuring tape around the body at the fullest part of the hip, feet together.

In instances when your body measurements for waist and hip are in different suggested sizes, we recommend going with the size from your hip measurement.

CENTER BACK LENGTH

CBL is measured from the high point of the shoulder



FIT ON BODY



SIZING GUIDE – MEN’S

SIZING Measurements refer to body size, not garment dimensions.

In instances when your body measurements are midway between two sizes, go to the smaller size for a tighter fit or the larger size for a looser fit.

UPPER BODY MEASUREMENTS

MAN (INCHES)	S	M	L	XL	XXL
CHEST	35¾	38¾	42	45	48¾
HEIGHT	5' 10	5' 10¾	5' 11½	6' 0¼	6' 1

MAN (CM)	S	M	L	XL	XXL
CHEST	90.5	98.5	106.5	114.5	122.5
HEIGHT	177.5	179.5	181.5	183.5	185.5

HOW TO MEASURE:

CHEST	Place tape measure across your back, underneath your arms and then across the fullest part of the chest.
HEIGHT	This is your true height, without the assistance of shoes.

In instances when your body measurements for chest and height are in two different suggested sizes, we recommend going with the size from your chest measurement.

LOWER BODY MEASUREMENTS

MAN (INCHES)	S	M	L	XL	XXL
WAIST	30½	33¾	36	38¾	41½
HIP	37	39½	42	44½	47

MAN (CM)	S	M	L	XL	XXL
WAIST	77.5	84.5	91.5	98.5	105.5
HIP	93.5	100.0	106.5	113.0	119.5

MAN (INCHES)	S	M	L	XL			
WOVEN BOTTOMS SIZES	28	30	32	34	36	38	40

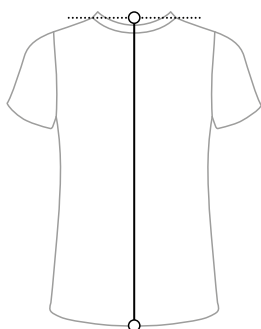
HOW TO MEASURE:

WAIST	Measure at your navel.
HIP	Place the measuring tape around the body at the fullest part of the hip, feet together.

In instances when your body measurements for waist and hip are in different suggested sizes, we recommend going with the size from your hip measurement.

CENTER BACK LENGTH

CBL is measured from the high point of the shoulder



FIT ON BODY



SIZING GUIDE – KIDS

SIZING Measurements refer to body size, not garment dimensions.

In instances when your body measurements are midway between two sizes, go to the smaller size for a tighter fit or the larger size for a looser fit.

BODY MEASUREMENTS

KIDS (INCHES)									
SIZE (AGE)	2	3	4	5	6	8	10	12	14
HEIGHT	36 1/4	38 5/8	41	43 1/4	45 5/8	50 3/8	55 1/8	59 7/8	64 5/8
WEIGHT (LB)	29 - 33	33 - 37	37 - 42	42 - 46	46 - 53	53 - 64	64 - 82	82 - 101	101 - 121
CHEST	20 1/2	21 1/4	22	22 7/8	23 5/8	26	28 3/8	30 3/4	33 1/8
WAIST	20 1/8	20 1/2	20 7/8	21 1/4	21 5/8	23 1/4	24 3/4	26 3/8	28
HIP	21 1/4	22 1/4	23 1/4	24 1/4	25 1/4	27 1/2	29 7/8	32 1/4	34 5/8

KIDS (CM)									
SIZE (AGE)	2	3	4	5	6	8	10	12	14
HEIGHT	92	98	104	110	116	128	140	152	164
WEIGHT (KG)	13 - 15	15 - 17	17 - 19	19 - 21	21 - 24	24 - 29	29 - 37	37 - 46	46 - 55
CHEST	52	54	56	58	60	66	72	78	84
WAIST	51	52	53	54	55	59	63	67	71
HIP	54	56.5	59	61.5	64	70	76	82	88

HOW TO MEASURE:

CHEST	Place tape measure across your back, underneath your arms and then across the fullest part of the chest.
HEIGHT	This is your true height, without the assistance of shoes.

In instances when your body measurements for chest and height are in two different suggested sizes, we recommend going with the size from your chest measurement.

SIZING GUIDE – SOCKS

SOCKS & COMPRESSION SIZING

If you are between sizing, we recommend you size down.

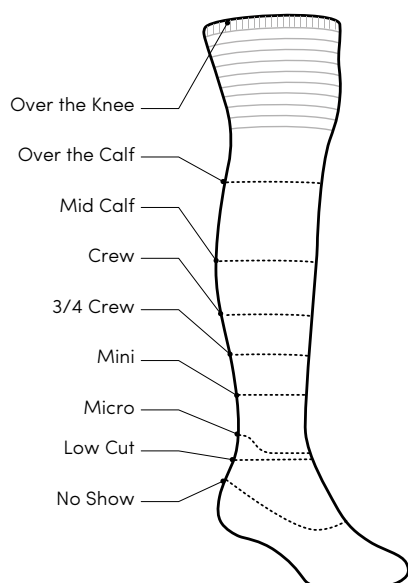
WOMAN	WS	WM	WL	OS
USA	5.5-7	7.5-9	9.5-11	6-10.5
UK	3-4.5	5-6.5	7-8.5	3.5-8
EURO	35-37	38-40	41-43	36-42
CALF MEASUREMENT	30-33cm 11¾-13"	33-36cm 13-14¼"	36-39cm 14¼-15½"	

MAN	S	M	L	XL	OS
USA	7-8.5	9-10.5	11-12.5	13-14.5	9-13
UK	6-7.5	8-9.5	10-11.5	12-13.5	8-12
EURO	39-41.5	42-44	44.5-46.5	47-49	42-47
CALF MEASUREMENT	33-36cm 13-14¼"	36-39cm 14¼-15½"	39-42cm 15½-16½"	42-45cm 16½-17¾"	

UNISEX	S-M	L-XL
US WOMEN	5.5-11	11.5-12
US MEN	6-9	9.5-16
UK WOMEN	3.5-9	9.5-10
UK MEN	5.5-8.5	9-15.5
EU	36-42	42.5-49

KIDS	S	M	L	XL	XXL
USA	8-9.5	10-11.5	12-15	2-4	4.5-6.5
UK	6.5-8	8.5-10.5	11-13.5	1-3	3-5
EURO	24-26	27-29	30-32	33-36	35.5-37.5

SOCK HEIGHT GUIDE



INDEX

WOMEN'S

150 Zone Leggings	63	Nova Pullover Sweater	44	260 Tech LS Crew	112	Tropos Vest	72
150 Zone Legless	63	Nova Sweater Sweatshirt	44	260 Tech LS Half Zip	112		
150 Zone LS Crew	62	Persist Pants	21	260 Zone Leggings	107		
150 Zone LS Half Zip	62	Persist Shorts	21	260 Zone LS Crew	107		
150 Zone SS Crew	62	Quantum II LS Zip Hood	28	260 Zone LS Half Zip	107		
175 Everyday Boy Shorts	68	Ravyn LS Pocket Crew	49	Amplify LS Half Zip	87		
175 Everyday Cami	67	Ravyn SS Pocket Crew	49	Amplify SS Crew	87		
175 Everyday Leggings	68	Ravyn SS V	49	Amplify Tank	87		
175 Everyday Legless	68	Rush Vest	35	Anatomica Boxers	104		
175 Everyday LS Crew	67	Rush Windbreaker	35	Anatomica Briefs	104		
175 Everyday SS Crew	67	Saige LS Half Zip	17	Anatomica Cool-lite Boxers	102		
200 Oasis Boy Shorts	66	Siren Bikini	57	Anatomica Cool-lite Trunks	102		
200 Oasis Leggings	66	Siren Bra	55	Anatomica Long Boxers	104		
200 Oasis Legless	66	Siren Cami	55	Anatomica Seamless Boxers	101		
200 Oasis LS Crew	65	Siren Hipkini	57	Anatomica Seamless Long Boxers	101		
200 Oasis LS Half Zip	65	Siren LS Sweetheart	56	Anatomica SS Crew	103		
200 Oasis LS Scoop	65	Siren SS Sweetheart	56	Anatomica SS V	103		
200 Zone Leggings	61	Siren Tank	55	Anatomica Tank	103		
200 Zone LS Crew	60	Siren Thong	57	Away II LS Zip	73		
200 Zone LS Half Zip	60	Sphere LS Low Crew	27	Briar Hooded Jacket	97		
200 Zone Shorts	61	Sphere SS Low Crew	26	Briar Pants	96		
260 Tech Leggings	64	Sphere SS Scoop	27	Compass Flannel LS Shirt	95		
260 Tech LS Crew	64	Sphere Tank	26	Compass SS Shirt	95		
260 Tech LS Half Zip	64	Sprite Hot Pants	54	Connection Commuter Shorts	96		
260 Zone Leggings	59	Sprite Racerback Bra	54	Descender LS Zip	74		
260 Zone LS Crew	59	Tech Lite SS Low Crew -	26	Descender LS Zip Hood	74		
260 Zone LS Half Zip	59	Tech Lite SS Low Crew	26	Elowen SS Crew	94		
Amplify LS Half Zip	34	Tech Lite SS Polo	49	Helliers LS Zip Hood	99		
Amplify Racerback Tank	34	Tech Lite SS Scoop - Artist Tees	23	Impulse Running Shorts	89		
Amplify SS Low Crew	34	Tech Lite Tank - Artist Tanks	24	Impulse Training Shorts	91		
Anatomica Seamless Long Sport Bra	53	Tropos Hooded Windbreaker	18	Lydmar LS Zip	99		
Anatomica Seamless Sport Bra	53	Tropos Jacket	18	Momentum Hooded Pullover	90		
Anatomica Seamless Sport Hipkini	53	Tropos Vest	18	Momentum LS Crew	90		
Artist Tees	22	Via SS Scoop	43	Motion Seamless 3Q Tights	86		
Away II LS Zip Hood	19	Yanni Culotte	47	Motion Seamless LS Crew	85		
Briar Hooded Zip Parka	48	Yanni Midi Skirt	47	Motion Seamless LS Half Zip	85		
Crush Pants	50	Yanni Skirt	47	Motion Seamless SS Crew	85		
Descender LS Zip	20	Yanni Sleeveless Dress	46	Motion Seamless Tights	86		
Descender LS Zip Hood	20	Yanni Tank Midi Dress	46	Nature Dye Drayden LS Crew	93		
Elowen Sleeveless Dress	45			Nature Dye Drayden SS Pocket Crew	93		
Elowen SS Crew	43			Nature Dye Galen LS Crew	71		
Hana Jumpsuit	45			Nature Dye Galen SS Crew	71		
Helliers LS Zip Hood	50			Nature Dye Helliers LS Crew	93		
Impulse Running Shorts	36			Nova Sweater Sweatshirt	96		
Impulse Training Shorts	38			Persist Pants	75		
Lydmar LS Zip	50			Persist Shorts	75		
Momentum Hooded Pullover	37			Quantum II LS Zip Hood	82		
Momentum LS Crew	37			Ravyn LS Pocket Crew	98		
Motion Seamless 3Q Tights	33			Ravyn SS Pocket Tee	98		
Motion Seamless High Rise Tights	33			Ravyn SS V	98		
Motion Seamless LS Crew	31			Rush Jacket	88		
Motion Seamless LS Half Zip	32			Rush Vest	88		
Motion Seamless SS Crew	31			Saige LS Rugby	71		
Motion Seamless Tank	31			Shifter Pants	99		
Motion Seamless Tights	33			Solace SS Polo	94		
Nature Dye Drayden LS Crew	41			Sphere LS Crew	81		
Nature Dye Drayden SS Pocket Crew	41			Sphere SS Crew	81		
Nature Dye Drayden Tank	41			Spring Ridge LS Half Zip	73		
Nature Dye Galen 3Q Sleeve	17			Tech Lite LS Crew - Artist Tees	77		
Nature Dye Galen SS Crew	17			Tech Lite SS Crew - Artist Tees	76		
Nature Dye Helliers LS Crew	42			Tech Lite SS Polo	98		
				Tropos Hooded Windbreaker	72		
				Tropos Jacket	72		

KIDS

Kids 200 Oasis Leggings	119
Kids 200 Oasis LS Crew	119
Kids Hike Crew Light	120
Kids Lifestyle Crew Ultralight	120

SOCKS

Hike+ Crew Heavy	123
Hike+ Crew Light	123
Hike+ Crew Medium	123
Hike+ Mini Light	123
Hike Cool-Lite 3/4 Crew Light	125
Hike Cool-Lite Low Cut Light	125
Hike Crew Light	124
Hike Crew Medium	124
Hike Liner Crew Ultralight	124
Lifestyle Cool-Lite Fine Crew Ultralight	129
Lifestyle Cool-Lite Fine No Show Ultralight	129
Lifestyle Crew Fine Ultralight	128
Lifestyle Crew Light	130
Lifestyle Crew Ultralight	130
Mountaineer Mid Calf Expedition	125
Multisport Micro Ultralight	127
Multisport Mini Light	127
Multisport Mini Ultralight	127
Run+ Micro Ultralight	126
Run+ Mini Ultralight	126
Ski+ OTC Light	131
Ski+ OTC Medium	131

ACCESSORIES

200 Oasis Glove Liners	136
260 Tech Glove Liners	136
Cool-Lite Flexi Beanie	134
Cool-Lite Flexi Chute	135
Cool-Lite Flexi Half Chute	135
Cool-Lite Flexi Headband	134
Icebreaker Graphic Hat	133
Icebreaker Logo Hat	133
Icebreaker Patch Hat	133
Pocket Hat	134
Quantum Gloves	136
Sierra Gloves	136

EUROPEAN AND DISTRIBUTOR CONTACTS

GERMANY, AUSTRIA

Icebreaker Pure Merino GmbH

Schiffbauerweg 1
82319 Starnberg
Germany

Customer service:
tel: 00800 111 222 77

SWITZERLAND

Icebreaker Switzerland GmbH

Industriestrasse 57
8152 Glattbrugg
Switzerland

tel: +41 44 809 99 80

Customer service:
tel: 00800 111 222 77

FRANCE

Icebreaker France

7, Avenue Du Pre Felin
Parc Les Glaisins
74940 Annecy-Le-Vieux
France

tel: +33 4 50 64 99 67

Service client:
tel: 00800 111 222 77

GF Outdoor/Greg Fourcade

Agence commerciale sud-ouest
38 Chemin Saint Come
81570 Vielmur sur Agout
France

SPAIN

Snowfactory

Crta Cornellà 140, 7ªA
08950 Esplugues, Bcn
Spain

tel: +34 93 480 29 96
Josep Olmos: +34 639 765 561

NORWAY

Norsk Fjellsport AS

Frysjavaeien 40
Oslo 0884
Norway

Ingvild Skuterud: +47 926 27 212
Monica Skildheim: + 47 928 15 777

Customer service:
00800 111 222 77

SWEDEN

Verticalx Swartling AB

Luxgatan 6
112 62 Stockholm
Sweden

Per Swartling: +46 73 581 65 62

Customer service:
tel: 00800 111 222 77

UNITED KINGDOM, IRELAND,
FINLAND, DENMARK, ICELAND,
GREENLAND

Bradshaw Taylor Ltd

16 Mill Street
Oakham, Rutland
LE15 6EA
UK

tel: +44 1572 772 437

fax: +44 1572 757929

BELGIUM, NETHERLANDS,
LUXEMBOURG

Ideavelop

Klavermaten 37c
7472 DD Hof van Twente (Goor)
Netherlands

tel: +31 547 35 2727

fax: +31 547 35 2777

EASTERN EUROPE

Outdoor Brothers s.r.o.

U Průhonu 1589/13a
1700 00 Praha 7
Czech Republic

Vlasta Pazourková
tel: +420 734 572 790

David Chovanec
tel: +420 773 637 359

Customer service:
tel: 00800 111 222 77 or
+49 (0) 8151 446 888 8

POLAND

Factor 42

Ulica Poprzeczna 37
43-300, Bielsko Biala
Poland

Joanna Pagacz: +48603098988

Customer service:
tel: 00800 111 222 77

RUSSIA

Distributor: Nordsport

«Chamonix» LLC
Permskaya Street, 11, bld.5,
office 417
107150, Moscow
Russia

tel: +7 495 780 3212 (ext.36)

UKRAIN

Distributor: Vysota Ltd

Chernomorskaya str. 1
Kiev, 04655
UKR

tel: +38 044 417 3386

ISRAEL

Sa'ar A.t. Enterprise & Trading Ltd.

5 Horkanus Ben Eliezer St.
Lod
Israel

tel: +972 89244452



icebreaker.com

GLOBAL TRADEMARK

Icebreaker and the Icebreaker logo are the global trademarks of Icebreaker Limited. Icebreaker Limited is the owner of all intellectual property used and developed in relation to its products and reserves all rights in relation to its intellectual property and the presentation of it in this workbook.

© 2019 ICEBREAKER LIMITED